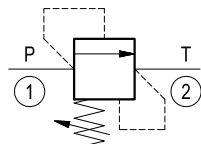
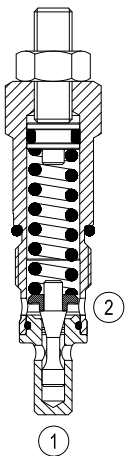


# Relief, direct acting guided poppet type, hardened seat

Special cavity, 008

VS-30-NCF

04.11.18 - X - 09 - Z



## Description

Flow is blocked from 1 to 2 until pressure increases to meet the selected valve setting, lifting the poppet from its seat and allowing relief flow through 2 to tank. Pressure at 2 is additive to the relief setting of the valve. The unique Bosch Rexroth Oil Control poppet design provides enhanced stability at all flows and pressures. A hardened seat is provided for increased durability in high-pressure, high-cycle applications.

## Technical data

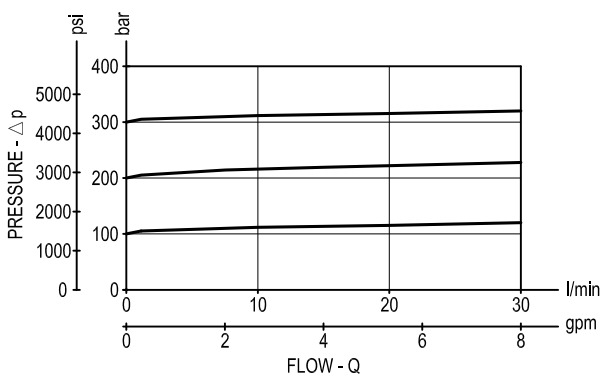
Max. operating pressure port 1 (P)	bar (psi)	420 (6000)
Max. operating pressure port 2 (T)	bar (psi)	140 (2000)
Max. flow	l/min. (gpm)	30 (8)
Max. internal leakage (*)	drops/min.	5
Fluid temperature range	°C (°F)	-30 to 100 (-22 to 212)
Installation torque	Nm (ft-lbs)	45-50 (33-37)
Weight	kg (lbs)	0.17 (0.38)
Special cavity		008, see data sheet RE 18325-75
Seal kit (**)	code material no.	RG0008010520100 R930001693
Fluids		Mineral-based or synthetics with lubricating properties at viscosities of 10 to 500 mm <sup>2</sup> /s (cSt)
Filtration		Nominal value max. 10µm (NAS 8) ISO 4406 19/17/14
Installation		No restrictions
Other Technical Data		See data sheet RE 18350-50

(\*) at 80% of pressure setting

(\*\*) Only external seals for 10 valves

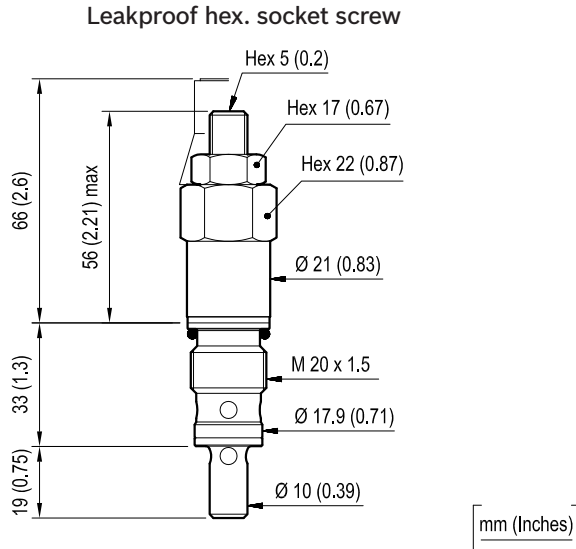
Note: the pressure setting must be done after installation, because the spring cannot be compressed while the cartridge is out of the cavity. For the same reason the threaded adjuster must be fully released prior to unscrewing the cartridge from the cavity.

## Performance



### Dimensions

**OPTION**  
 Tamper resistant cap  
 ordering code 11.04.23.003  
 Mat. no. R930000754



mm (Inches)

### Ordering code

04.11.18	X	09	Z	00	*
----------	---	----	---	----	---

Series 0/A to L  
 unchanged performances and dimensions

Version and options standard

Relief, direct acting guided poppet  
 type hardened seat

Adjustments  
 = 03 Leakproof hex. socket screw

Special cavity, 008

	SPRINGS	
	Adj. press. range bar (psi)	Pressure increase bar/turn (psi/turn)
= 05	5-50 (75-725) (*)	12 (174)
= 20	50-210 (725-3000)	47 (682)
= 35	100-350 (1450-5000)	82 (1189)
= 42	100-420 (1450-6000)	107 (1552)

(\*) minimum pressure setting intended with Q=5 l/min (1.3 gpm)  
**Note:** Special settings available. Contact factory authorized representative for ordering code

Type	Material number
04111803090500A	R930000129
04111803092000D	R930000132
04111803093500C	R901144794
041118030942000	R930000134

Type	Material number