

Relief, direct acting guided
 poppet type
 Special cavity, 008

VS-30

04.11.18 - X - 99 - Z

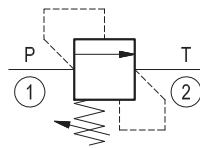
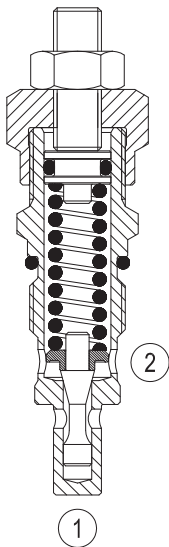
RE 18318-23

Edition: 03.2016

Replaces: 07.2010

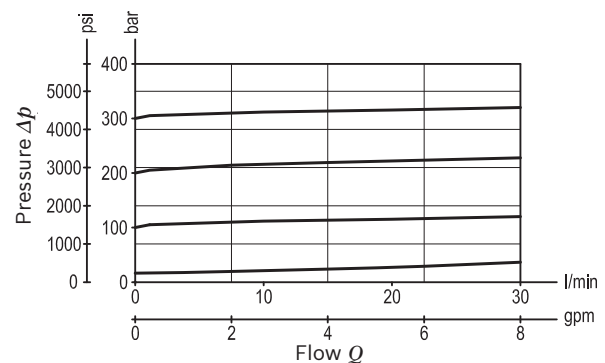
**Description**

Flow is blocked from 1 to 2 until pressure increases to meet the selected valve setting, lifting the poppet from its seat and allowing relief flow through port 2 to tank. Pressure at port 2 is additive to the relief setting of the valve. The unique Bosch Rexroth Oil Control poppet design provides enhanced stability at all flows and pressures.

**Technical data**

| | |
|---|--|
| Max. operating pressure port 1 (P) | 350 bar (5000 psi) |
| Max. pressure admitted port 2 (T) | 140 bar (2000 psi) |
| Max. flow | 30 l/min (8 gpm) |
| Max. internal leakage ¹⁾ | 15 drops/min. |
| Fluid temperature range | -30 to 100 °C (-22 to 212 °F) |
| Installation torque | 45 - 50 Nm (33 - 37 ft-lbs) |
| Weight ²⁾ | 0.17 kg (0.38 lbs) |
| Special cavity | 008 (see data sheet 18325-75) |
| Lines bodies and standard assemblies | Please refer to section "Hydraulic integrated circuit" or consult factory |
| Seal kit ³⁾ | Code: RG0008010000100 material no: R930001692 |
| Fluids | Mineral-based or synthetics with lubricating properties at viscosities of 10 to 500 mm ² /s (cSt) |
| Recommended degree of fluid contamination | Nominal value max. 10µm (NAS 8) / ISO 4406 19/17/14 |
| Installation position | No restrictions |
| Other Technical Data | See data sheet 18350-50 |

- 1) At 80% of pressure setting
- 2) Standard version O3 type
- 3) Only external seals for 10 valves

Characteristic curve

Ordering code

| | | | | | |
|-----------------|----------|-----------|----------|-----------|----------|
| 04.11.18 | X | 99 | Z | 00 | * |
|-----------------|----------|-----------|----------|-----------|----------|

Relief, direct acting guided poppet type

Adjustments

- 03** Leakproof hex. socket screw
- 04** Handknob and locknut

99 Special cavity, 008

Series 0/A to L
unchanged performances and dimensions

Version and options standard

| SPRINGS | | | |
|-----------|-----------------------------|---------------------------------------|----------------------------------|
| | Adj. press. range bar (psi) | Pressure increase bar/turn (psi/turn) | Std. setting bar (psi) Q=5 l/min |
| 05 | * 5-50 (75-725) | 12 (174) | 50 (725) |
| 10 | 30-100 (435-1450) | 24 (348) | 100 (1450) |
| 20 | 50-210 (725-3000) | 47 (682) | 200 (2900) |
| 35 | 100-350 (1450-5000) | 82 (1189) | 350 (5000) |

Note: Special settings available. Contact factory authorized representative for ordering code.

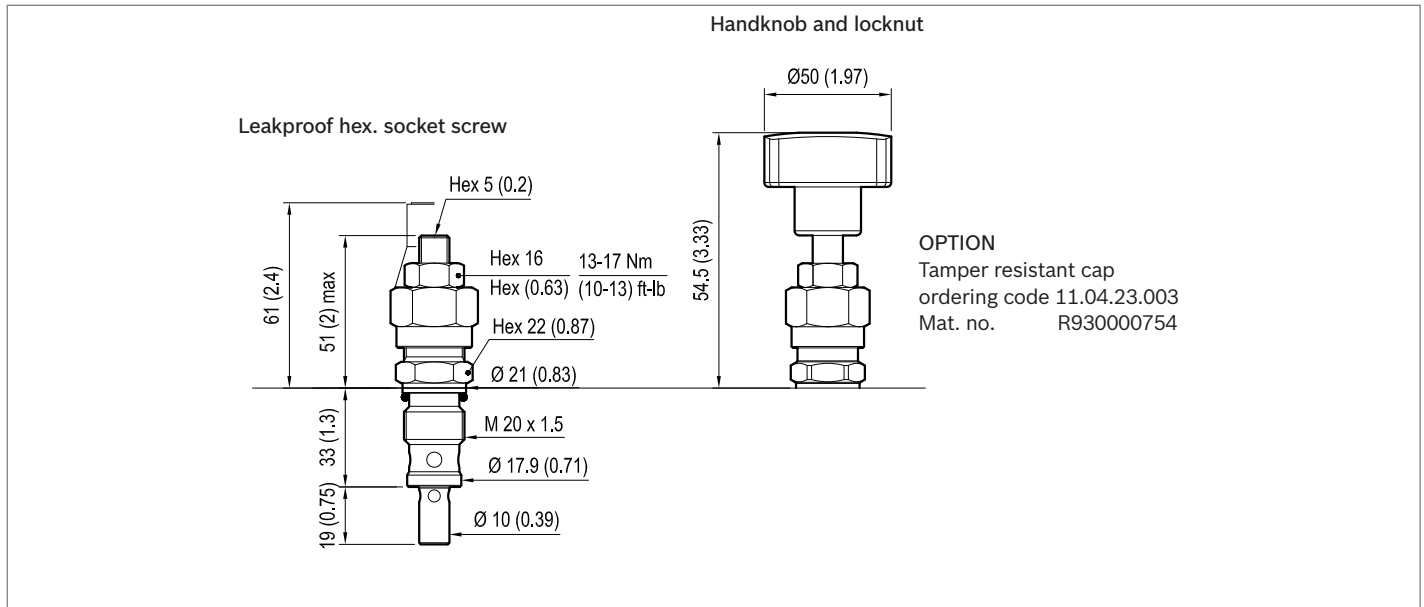
* minimum pressure setting intended with Q=5 l/min

Preferred types

| Type | Material number |
|-----------------|-----------------|
| 041118039905000 | R901113613 |
| 041118039910000 | R901113614 |
| 041118039920000 | R901226876 |
| 041118039935000 | R901113617 |

| Type | Material number |
|-----------------|-----------------|
| 041118049905000 | R930000148 |
| 041118049910000 | R930000149 |
| 041118049920000 | R901127942 |
| 041118049935000 | R930000151 |

Dimensions



Bosch Rexroth Oil Control S.p.A.

Via Leonardo da Vinci 5
 P.O. Box no. 5
 41015 Nonantola – Modena, Italy
 Tel. +39 059 887 611
 Fax +39 059 547 848
 compact-hydraulics-cv@boschrexroth.com
 www.boschrexroth.com/compacthydraulics

© This document, as well as the data, specifications and other information set forth in it, are the exclusive property of Bosch Rexroth Oil Control S.p.a.. It may not be reproduced or given to third parties without its consent. The data specified above only serve to describe the product. No statements concerning a certain condition or suitability for a certain application can be derived from our information. The information given does not release the user from the obligation of own judgment and verification. It must be remembered that our products are subject to a natural process of wear and aging. Subject to change.