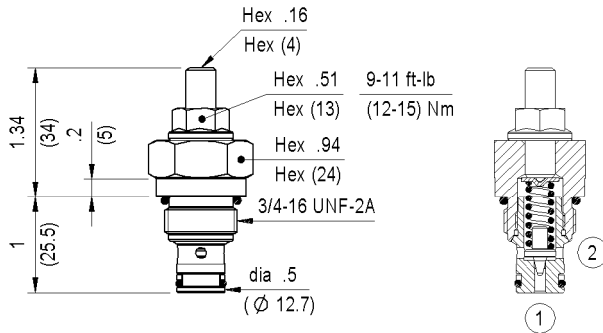


**RELIEF, DIRECT ACTING POPPET TYPE  
SPECIAL CAVITY**



**VSAC-08E**

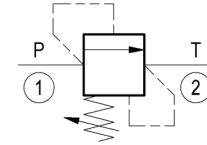
**04.11.61 - X - 56 - Z**



**Available for spare parts only !**

Inches  
(mm)

Flow is blocked from 1 to 2 until pressure increases to meet the selected valve setting, lifting the poppet from its seat and allowing relief flow through port 2 to tank. Pressure at port 2 is additive to the relief setting of the valve. The cartridge is especially suited for pilot or thermal relief applications.



**TECHNICAL DATA**

Max. pressure: 6000 psi (420 bar)

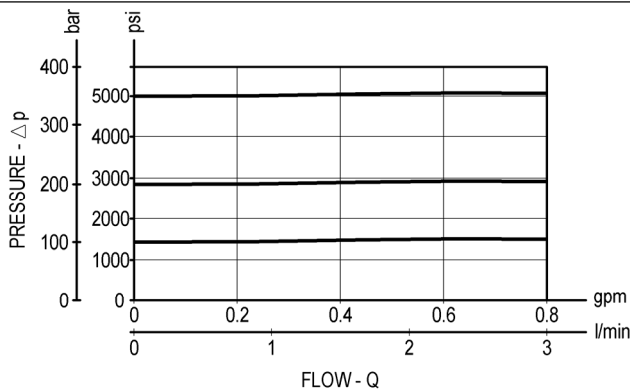
Max. flow: 1 gpm (3 l/min)

Special cavity : 018/E

Installation torque : 25-30 ft-lb (34-41 Nm)

Weight: 0.309 lbs (0.140 Kg)

Note: for series production, please refer to **VSAN-08A (041148X56Z)**. Consult "Cartridge program catalogue" RE00162-02 or visit our website ([www.oilcontrol.com](http://www.oilcontrol.com))



**X ADJUSTMENTS**

**03** Leakproof hex. socket screw



**Z SPRINGS**

Z	Adj. press. range psi (bar)	Press. increase psi / turn (bar/turn)	Standard setting psi (bar) (Q=1 l/min)
<b>10</b>	500-2000 (35-140)	696 (48)	1450 (100)
<b>20</b>	1500-3000 (105-210)	1276 (88)	2900 (200)
<b>35</b>	2000-6000 (140-420)	2030 (140)	5000 (350)