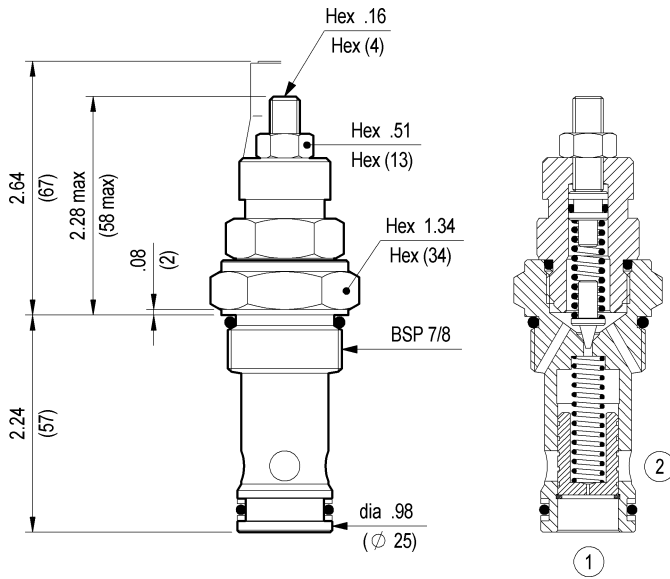


**RELIEF, PILOT OPERATED POOL TYPE  
SPECIAL CAVITY**



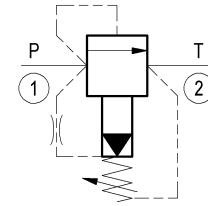
**VSP-180**

**04.12.05 - X - 99 - Z**



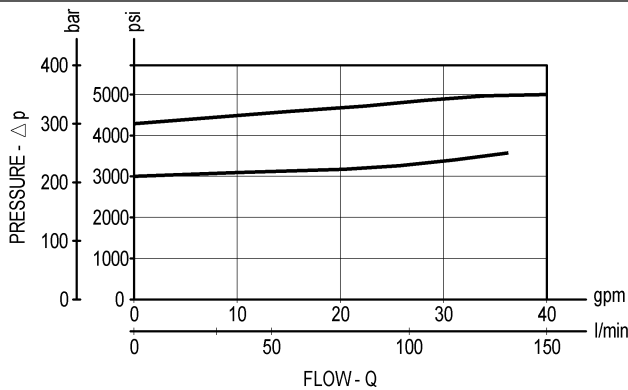
Inches  
(mm)

Flow is blocked from 1 to 2 until pressure increases to meet the selected valve setting, lifting the conical, pilot-stage poppet from its seat. This action exhausts oil above the main-stage piston (spool type), allowing it to shift and provide relief flow through 2 to tank. Pressure at 2 is additive to the relief setting of the valve.



**TECHNICAL DATA**

Max. pressure:	6000 psi	(420 bar)
Max. flow:	40 gpm	(150 l/min)
Max leakage at 90% of std. pressure setting :	0.05 gpm	(0.20 l/min)
Special cavity :	033 (see page CT.S.002.U)	
Installation torque :	89-98 ft-lb	(121-133 Nm)
Weight:	0.706 lbs	(0.320 Kg)



**X ADJUSTMENTS**

**03** Leakproof hex. socket screw



**Z SPRINGS**

Z	Adj. press. range psi (bar)	Press. increase psi / turn (bar/turn)	Standard setting psi (bar) (Q=5 l/min)	Ordering code	Color
<b>20</b>	1160-3000 (80-210)	1117 (77)	3200 (220)	03.51.01.123	green
<b>35</b>	2900-6000 (200-420)	3263 (225)	5000 (350)	03.51.01.113	yellow

**OPTIONS**

Ordering code	Description
11.04.23.002	Tamper resistant cap

Special settings available. Contact factory authorized representative for ordering code.