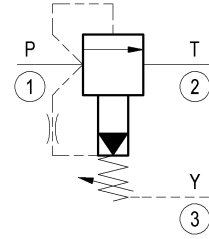
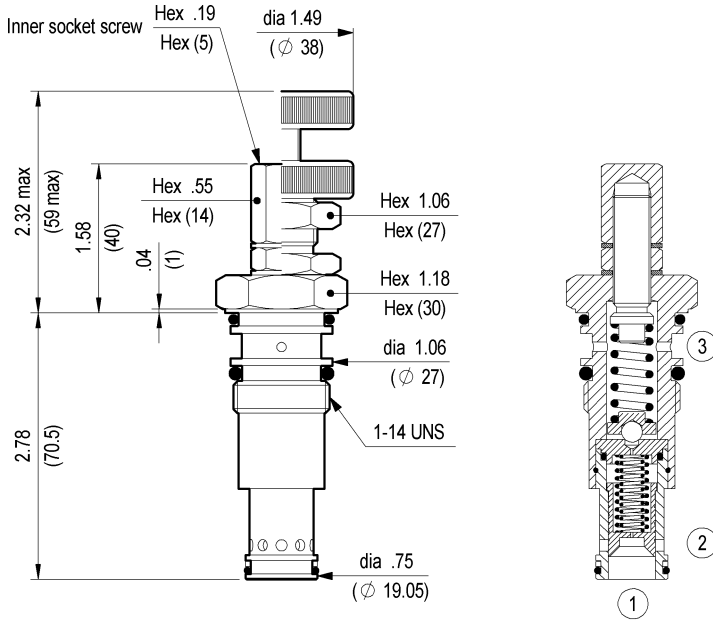


**RELIEF, PILOT OPERATED SPOOL TYPE  
 EXTERNAL DRAIN  
 SPECIAL CAVITY**

**VSP-SD-150**

**04.13.03 - X - 99 - Z**

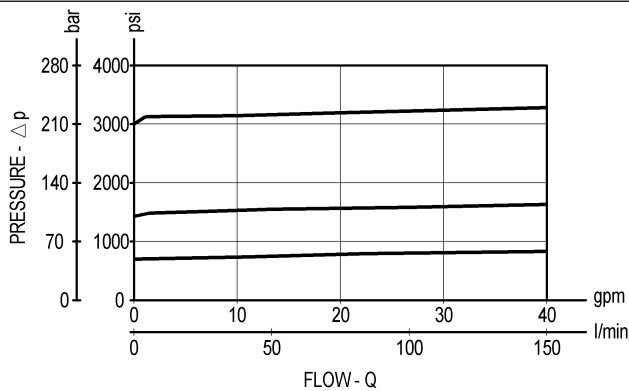


**TECHNICAL DATA**

Max. pressure:	3000 psi	(210 bar)
Max. flow:	40 gpm	(150 l/min)
Leakage at max relief setting ave. :	0.03 gpm	(0.10 l/min)
Special cavity :	072 (see page CT.S.002.U)	
Installation torque :	89-98 ft-lb	(121-133 Nm)
Weight:	0.617 lbs	(0.280 Kg)

Inches  
(mm)

Flow is blocked from 1 to 2 until pressure increases to meet the selected valve setting, lifting the pilot-stage ball check from its seat. This action exhausts oil above the main-stage piston (spool type), allowing it to shift and provide relief flow through 2 to tank. The spring chamber is drained to tank at 3 allowing a consistent relief setting independent of back-pressure at 2.



**X ADJUSTMENTS**

<b>03</b>	Leakproof inner hex. socket screw	
<b>04</b>	Handknob and locknut	

**SPRINGS**

<b>Z</b>	Adj. press. range psi (bar)	Press. increase psi / turn (bar/turn)	Standard setting psi (bar) (Q=5 l/min)		
<b>20</b>	145-3000 (10-210)	508 (35)	2900 (200)		