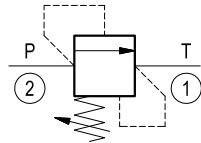
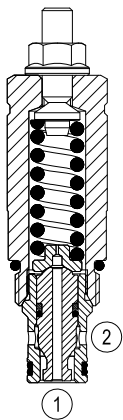


Relief, direct acting poppet type differential area

Common cavity, Size 10

VSDN-10A

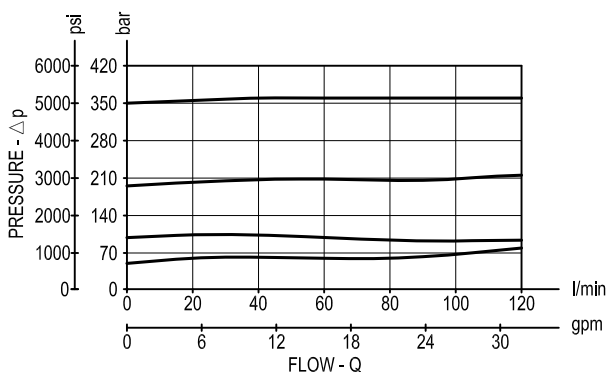
04.15.23 - X - 85 - Z



Description

Flow is blocked from 2 to 1 until pressure increases to meet the selected valve setting, lifting the poppet from its seat and allowing relief flow through port 1 to tank. Pressure at port 1 is additive to the relief setting of the valve. The unique Bosch Rexroth Oil Control poppet design provides enhanced stability at all flows and pressures.

Performance



Technical data

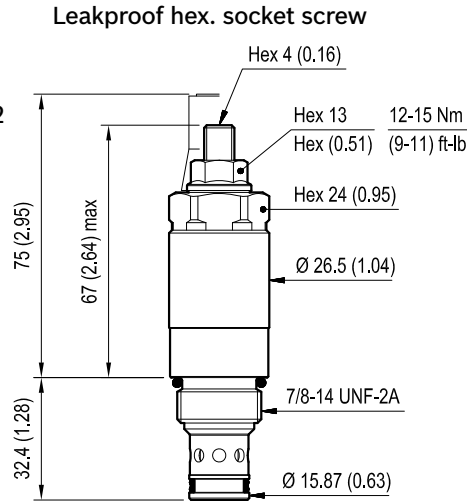
Max. operating pressure port 2 (P)	bar (psi)	350 (5000)
Max. operating pressure port 1 (T)	bar (psi)	140 (2000)
Max. flow	l/min. (gpm)	120 (32)
Max. internal leakage (*)	drops/min.	15
Fluid temperature range	°C (°F)	-30 to 100 (-22 to 212)
Installation torque	Nm (ft-lbs)	41-47 (30-35)
Weight	kg (lbs)	0.2 (0.44)
Common cavity		CA-10A-2N see data sheet RE 18325-70
Seal kit (**)	code material no.	RG10A2010520100 R901111363
Fluids		Mineral-based or synthetics with lubricating properties at viscosities of 10 to 500 mm ² /s (cSt)
Filtration		Nominal value max. 10µm (NAS 8) ISO 4406 19/17/14
Installation		No restrictions
Other Technical Data		See data sheet RE 18350-50

(*) at 80% of cracking pressure

(**) Only external seals for 10 valves

Dimensions

OPTION
 Tamper resistant cap
 ordering code 11.04.23.002
 Mat. no. R930000752



mm (Inches)

Ordering code

04.15.23	X	85	Z	00	*
----------	---	----	---	----	---

Series 0/A to L
 unchanged performances and dimensions

Relief, direct acting poppet
 type differential area

Version and options standard

Adjustments

= 03 Leakproof hex. socket screw

	SPRINGS		
	Adj. press. range bar (psi)	Pressure increase bar/turn (psi/turn)	Std. setting bar (psi) (Q=5 l/min)
= 10	35-140 (500-2000)	46 (667)	100 (1450)
= 35	100-350 (1450-5000)	86 (1247)	350 (5000)

Common cavity, Size 10

Note: Special settings available. Contact factory
 authorized representative for ordering code

Type	Material number
041523038510000	R930005643
041523038535000	R930005644

Type	Material number