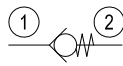
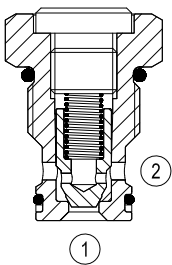


Check, poppet type

Special cavity, 690

VU-N-38

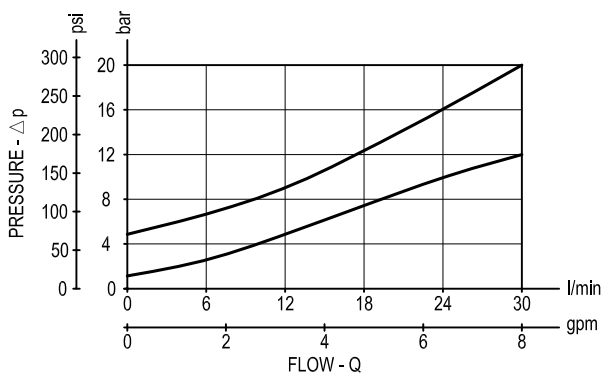
04.31.19.00.99 - Z



Description

When pressure at 1 rises above the spring bias pressure, the poppet is lifted and flow allowed from 1 to 2. The valve is closed (checked) from 2 to 1. Precision machining and hardening processes allow virtually leak-free performance in the checked condition.

Performance

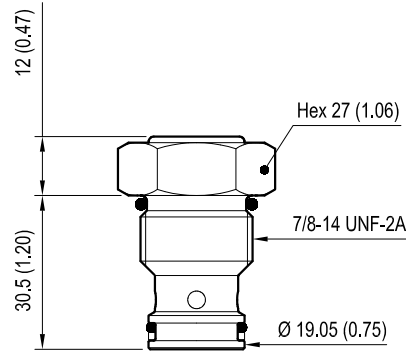


Technical data

Max. operating pressure	bar (psi)	350 (5000)
Max. flow	l/min. (gpm)	30 (8)
Max. internal leakage	drops/min.	5
Fluid temperature range	°C (°F)	-30 to 100 (-22 to 212)
Installation torque	Nm (ft-lbs)	78-85 (56-63)
Weight	kg (lbs)	0.1 (0.22)
Special cavity		690 see data sheet RE 18325-75
Seal kit (*)	code material no.	RG0690010520100 R930001702
Fluids		Mineral-based or synthetics with lubricating properties at viscosities of 5 to 800 mm ² /s (cSt)
Filtration		Nominal value max. 10µm (NAS 8) ISO 4406 19/17/14
Installation		No restrictions
Other Technical Data		See data sheet RE 18350-50

(*) Only external seals for 10 valves

Dimensions



[mm (Inches)]

Ordering code

04.31.19.00	99	Z	00	*
-------------	----	---	----	---

Check, poppet type

Special cavity, 690

Series 0/A to L
unchanged performances and dimensions

Version and options standard

SPRINGS	
Cracking pressure bar (psi)	
= 00	1 (15)
= 01	4.5 (65)

Type	Material number
043119009900000	R930000456
043119009901000	R930000457

Type	Material number