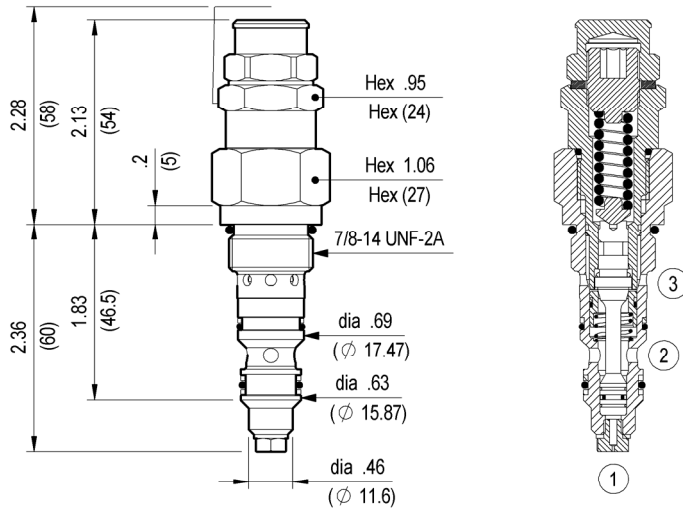


**COUNTERBALANCE, STANDARD POPPET TYPE
 DIFFERENTIAL AREA
 SPECIAL CAVITY**

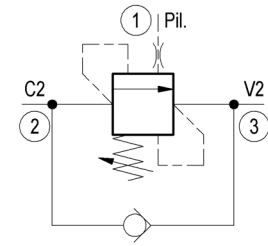
VBSO-SEC-78

04.52.09 - X - 99 - Z



Inches
(mm)

When pressure at 3 rises above the spring bias pressure, the check seat is pushed away from the piston and flow is allowed from 3 to 2. When load pressure at 2 rises above the pressure setting, the direct-acting, differential area relief function is activated and flow is relieved from 2 to 3. With pilot pressure at 1, the pressure setting is reduced in proportion to the stated ratio of the valve, until fully open with free-flow from 2 to 3. The spring chamber is drained to 3, and any back-pressure at 3 is additive to the pressure setting in all functions.



TECHNICAL DATA

Max. pressure: 5000 psi (350 bar)

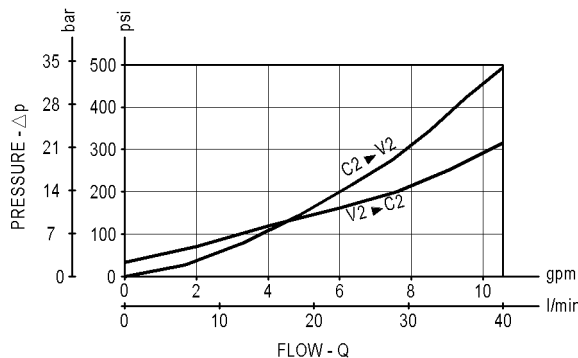
Max. flow: 11 gpm (40 l/min)

Special cavity : 416 (see page CT.S.003.U)

Installation torque : 41-47 ft-lb (55-64 Nm)

Weight: 0.639 lbs (0.290 Kg)

Pressure setting: at least 1.3 times the load induced pressure



X

PILOT RATIO

03

4.1 : 1

Z

SPRINGS

Adj. press. range psi (bar)	Press. increase psi / turn (bar/turn)	Standard setting psi (bar) (Q=5 l/min)
35 1450-5000 (100-350)	2030 (140)	5000 (350)

OPTIONS

Ordering code

Description

11.04.36.001



Tamper resistant cap

Special settings available. Contact factory authorized representative for ordering code.