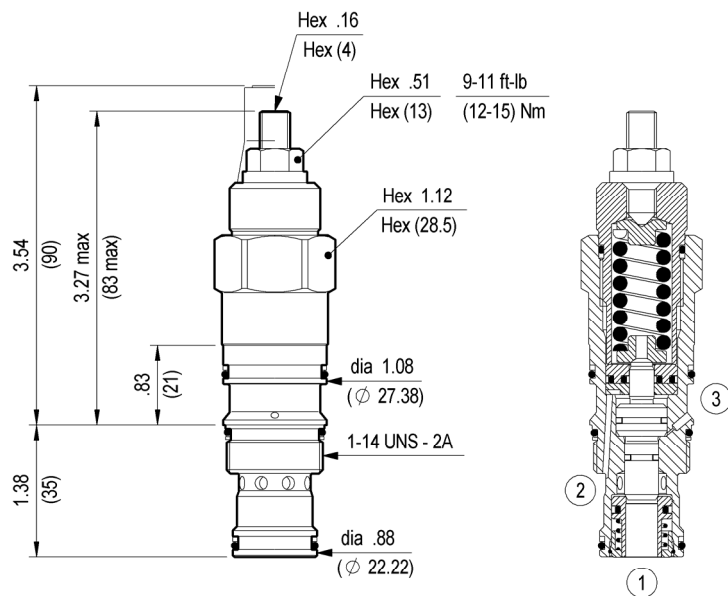




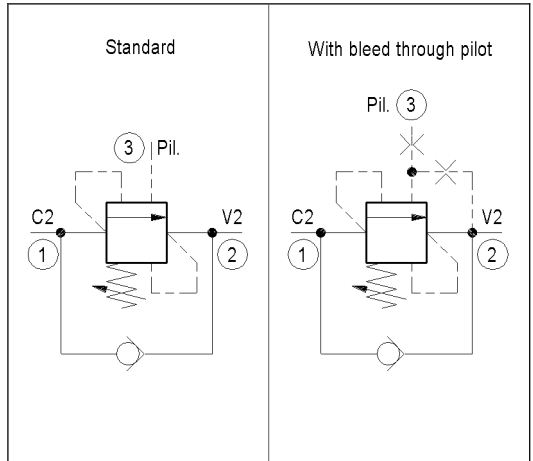
**COUNTERBALANCE, STANDARD POPPET TYPE
DIFFERENTIAL AREA
SUN CAVITY INTERCHANGE**

VBSN-12U T-2A 04.52.27 - X - 86 - Z

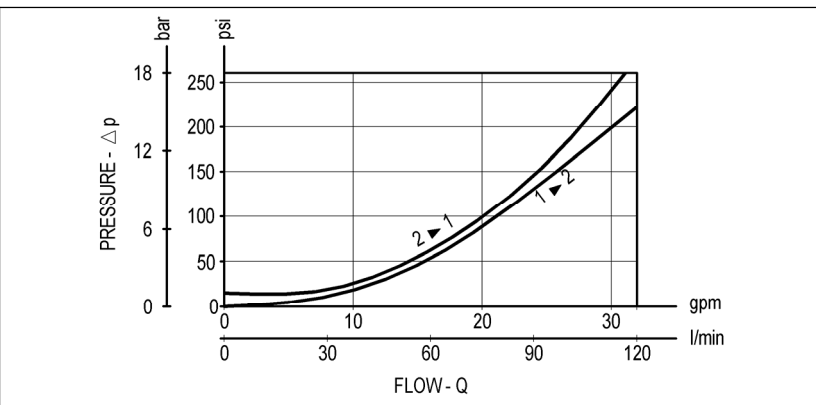


Inches
(mm)

When pressure at 2 rises above the spring bias pressure, the check seat is pushed away from the piston and flow is allowed from 2 to 1. When load pressure at 1 rises above the pressure setting, the direct-acting, differential area relief function is activated and flow is relieved from 1 to 2. With pilot pressure at 3, the pressure setting is reduced in proportion to the stated ratio of the valve, until fully open with free-flow from 1 to 2. The spring chamber is drained to 2, and any back-pressure at 2 is additive to the pressure setting in all functions.



TECHNICAL DATA		
Max. pressure:	5000 psi	(350 bar)
Max. flow:	32 gpm	(120 l/min)
Cavity : SUN T-2A		
External seal kit : see page A11.211		
Installation torque :	44-52 ft-lb	(60-70 Nm)
Weight:	0.816 lbs	(0.370 Kg)
Pressure setting: at least 1.3 times the load induced pressure		



X	PILOT RATIO	
03	4 : 1	Standard version
10	8 : 1	Standard version
42	2 : 1	With bleed through pilot

Z	SPRINGS		
	Adj. press. range psi (bar)	Press. increase psi / turn (bar/turn)	Standard setting psi (bar) (Q=5 l/min)
X = 03	20	1000-3000 (70-210)	725 (50)
	35	2000-5000 (140-350)	2306 (159)
X = 10	20	1000-3000 (70-210)	609 (42)
	35	2000-5000 (140-350)	972 (67)
X = 42	20	1000-3000 (70-210)	725 (50)
	35	2000-5000 (140-350)	2306 (159)

OPTIONS	
Ordering code	Description
11.04.23.002	 Tamper resistant cap
Special settings available. Contact factory authorized representative for ordering code.	