

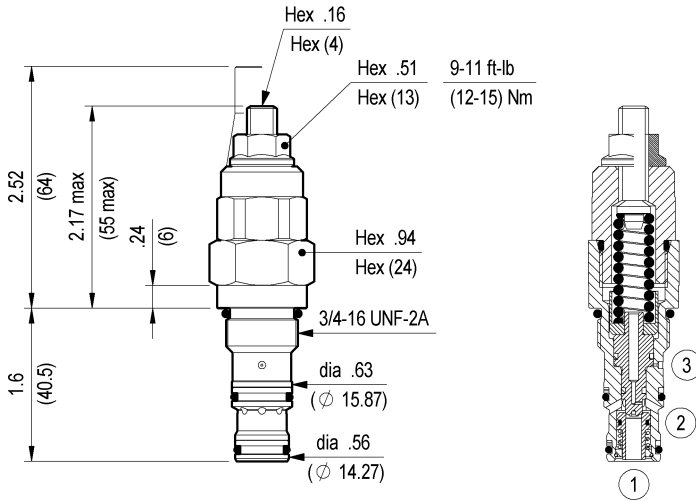
**COUNTERBALANCE, STANDARD GUIDED POPPET TYPE  
COMMON CAVITY**



**VBSN-08BB**

**SIZE 08**

**04.52.36 - X - 56 - Z**



Inches  
(mm)

When pressure at 2 rises above the spring bias pressure, the check seat is pushed away from the piston and flow is allowed from 2 to 1. When load pressure at 1 rises above the pressure setting, the direct-acting, relief function is activated and flow is relieved from 1 to 2. With pilot pressure at 3, the pressure setting is reduced in proportion to the stated ratio of the valve, until fully open with free-flow from 1 to 2. The spring chamber is drained to 2, and any back-pressure at 2 is additive to the pressure setting in all functions.

**TECHNICAL DATA**

Max. pressure: 5000 psi (350 bar)

Max. flow: 8 gpm (30 l/min)

Cavity : CA-08A-3N (see page CT.A.003.U)

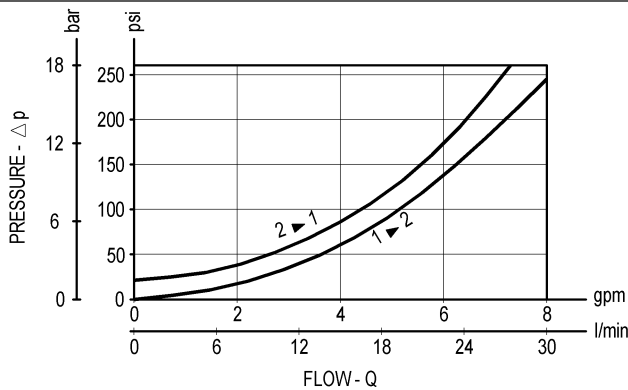
Line bodies : see page MN1.A...

External seal kit : see page A11.011

Installation torque : 25-30 ft-lb (34-41 Nm)

Weight: 0.397 lbs (0.180 Kg)

Pressure setting: at least 1.3 times the load induced pressure



**X PILOT RATIO**

**03 4 : 1**

**SPRINGS**

<b>Z</b>	<b>SPRINGS</b>			
	Adj. press. range psi (bar)	Press. increase psi / turn (bar/turn)	Standard setting psi (bar) (Q=5 l/min)	Ordering code
<b>20</b>	1450-3000 (100-210)	1581 (109)	2900 (200)	03.51.01.328
<b>35</b>	2900-5000 (200-350)	1987 (137)	5000 (350)	03.51.01.327

**OPTIONS**

Ordering code	Description
11.04.23.002	Tamper resistant cap

Special settings available. Contact factory authorized representative for ordering code.