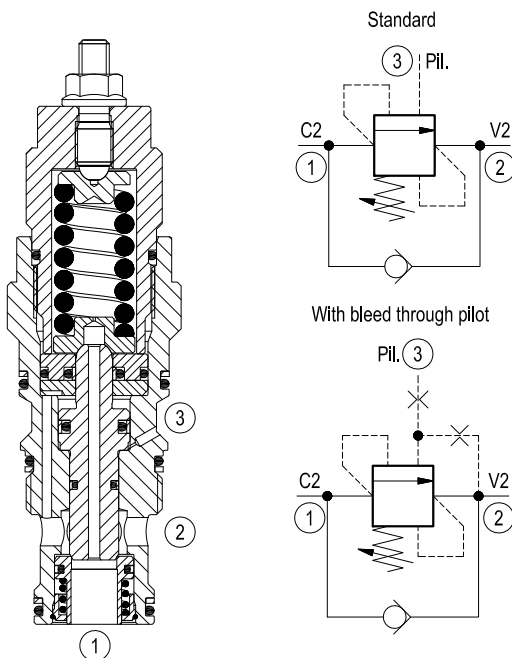


Counterbalance, standard poppet type, differential area, counterclockwise adjustment SUN cavity interchange, T-17A

VBSN-16U-RS

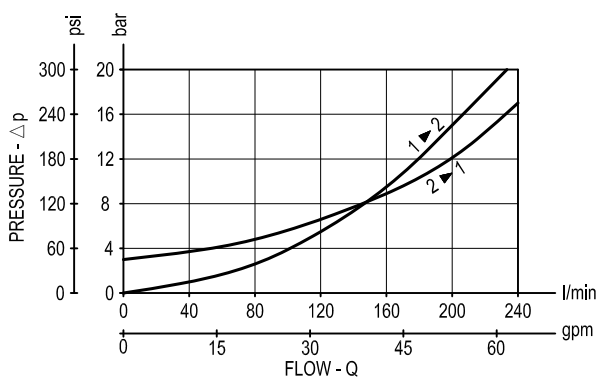
04.52.45 - X - 47 - Z



Description

When pressure at 2 rises above the spring bias pressure, the check seat is pushed away from the piston and flow is allowed from 2 to 1. When load pressure at 1 rises above the pressure setting (turn counterclockwise to increase setting - turn clockwise to decrease setting), the direct-acting, differential area relief function is activated and flow is relieved from 1 to 2. With pilot pressure at 3, the pressure setting is reduced in proportion to the stated ratio of the valve, until fully open with free-flow from 1 to 2. Any back-pressure at 2 is additive to the pressure setting in all functions.

Performance



Technical data

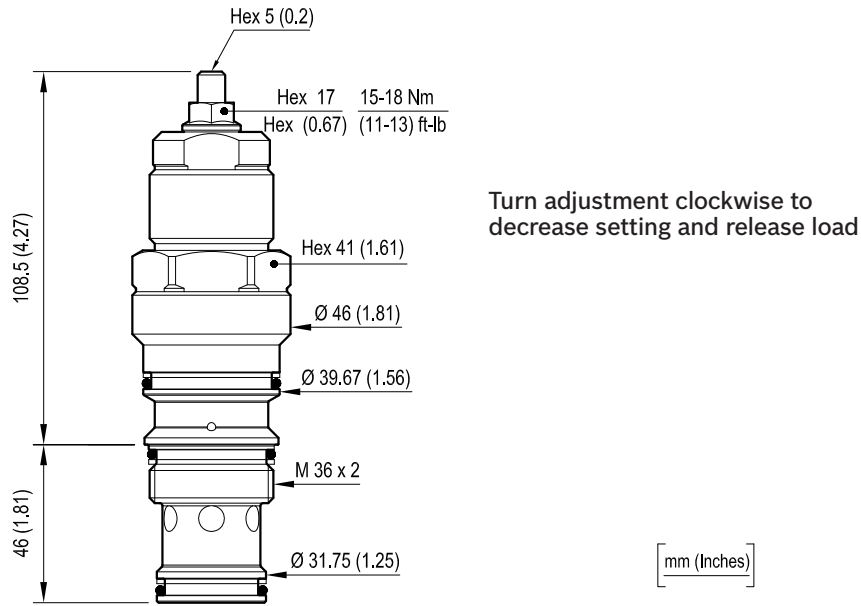
Max. operating pressure	bar (psi)	420 (6000)
Max. flow	l/min. (gpm)	240 (63)
Max. internal leakage (*)	drops/min.	15
Fluid temperature range	°C (°F)	-30 to 100 (-22 to 212)
Installation torque	Nm (ft-lbs)	200-215 (148-159)
Weight	kg (lbs)	0.8 (1.76)
Cavity		SUN T-17A
Seal kit (**)	code material no.	RG16U9020110100 R930000995
Fluids		Mineral-based or synthetics with lubricating properties at viscosities of 10 to 500 mm ² /s (cSt)
Filtration		Nominal value max. 10µm (NAS 8) ISO 4406 19/17/14
Installation		No restrictions
Other Technical Data		See data sheet RE 18350-50

Pressure setting: at least 1.3 times the load induced pressure.

(*) At 70% of pressure setting

(**) Only external seals for 10 valves

Dimensions



Ordering code

04.52.45	X	47	Z	00	*
----------	---	----	---	----	---

Counterbalance, standard poppet type, differential area, counterclockwise adjustment

Pilot ratio
 = 03 4:1 standard version
 = 10 8:1 standard version
 = 42 2:1 with bleed through pilot

SUN cavity interchange, SUN T-17A

Series 0/A to L
 unchanged performances and dimensions

Version and options standard

		SPRINGS		
		Standard setting bar (psi)	Pres. increase bar/turn (psi/turn)	Cracking pressure bar (psi)
for X=03	= 20	70-280 (1000-4000)	80 (1160)	200 (2900)
	= 40	200-420 (2900-6000)	118 (1711)	350 (5000)
for X=10	= 20	70-280 (1000-4000)	49 (711)	200 (2900)
	= 40	200-420 (2900-6000)	77 (1117)	350 (5000)
for X=42	= 20	70-280 (1000-4000)	80 (1160)	200 (2900)
	= 40	200-420 (2900-6000)	118 (1711)	350 (5000)

Note: Special settings available. Contact factory authorized representative for ordering code

Type	Material number
045245034720000	R930000051
045245034740000	R930000052
045245104720000	R930000053
045245104740000	R930000054
045245424720000	R930000055

Type	Material number
045245424740000	R930000056