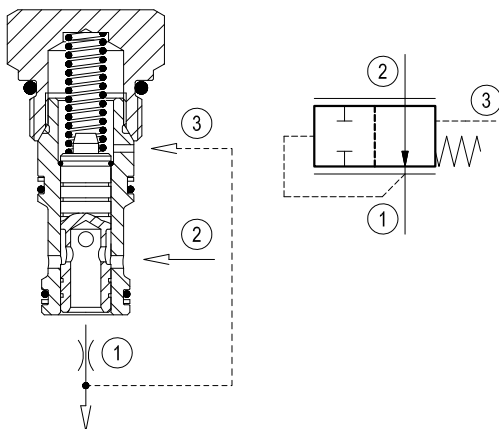


Logic element, flow control with external pilot

Common cavity, Size 10

VLSC-10A

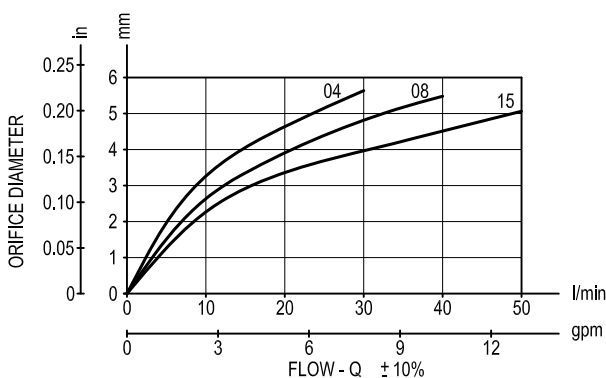
04.84.02 - X - 85 - Z



Description

When pressure at 1 rises above the selected spring bias pressure against the spool, the valve shifts to block flow from 2 to 1. Pilot pressure at 3 is additive to the spring bias pressure. The valve may be used in switching or compensation type applications, and will maintain a constant pressure drop across a fixed (or variable) orifice downstream of 1 when installed and piloted per the diagram above.

Performance



Technical data

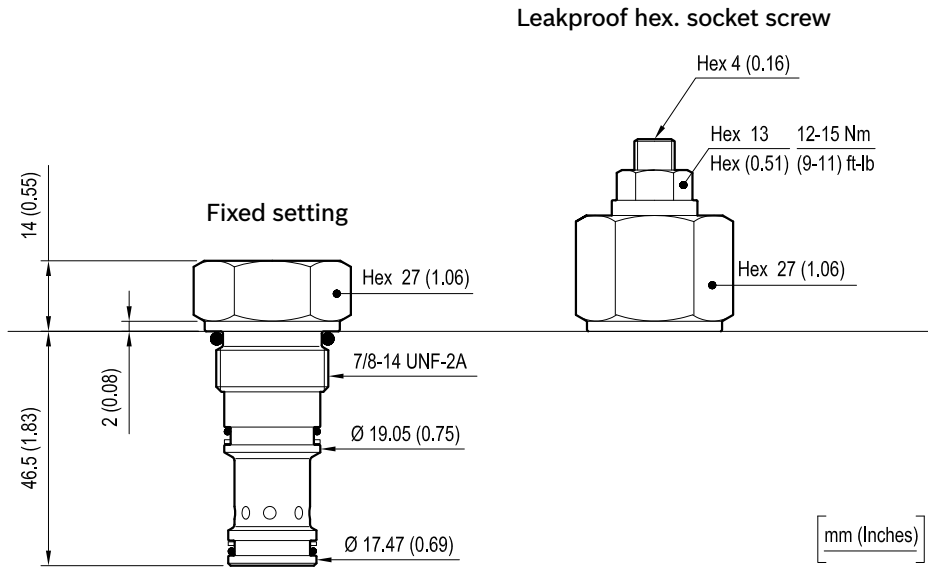
Max. operating pressure	bar (psi)	350 (5000)
Max. flow	l/min. (gpm)	30 (8)
Max. internal leakage (*)	cm ³ /min. (cu.in./min.)	50 (3)
Fluid temperature range	°C (°F)	-30 to 100 (-22 to 212)
Installation torque	Nm (ft-lbs)	41-47 (30-35)
Weight (**)	kg (lbs)	0.12 (0.27)
Cavity		CA-10A-3C see data sheet RE 18325-70
Seal kit (***)	code material no.	RG10A9010520100 R901111367
Fluids		Mineral-based or synthetics with lubricating properties at viscosities of 10 to 500 mm ² /s (cSt)
Filtration		Nominal value max. 10µm (NAS 8) ISO 4406 19/17/14
Installation		No restrictions
Other Technical Data		See data sheet RE 18350-50

(*) Measured at 200 bar (2900 psi)

(**) Standard version X=00 type

(***) Only external seals for 10 valves

Dimensions



Ordering code

04.84.02	X	85	Z	00	*
----------	---	----	---	----	---

Logic element, flow control with external pilot

Adjustments

- = 00 Fixed setting
- = 03 Leakproof hex. socket screw

Common cavity, Size 10

Series 0/A to L unchanged performances and dimensions

Version and options standard

		SPRINGS		
		Standard setting bar (psi)	Pres. increase bar/tum (psi/tum)	Bias spring bar (psi)
for X=00	= 04		-	4 (60) ±20%
	= 08	-	-	8 (115) ±15%
	= 15	-	-	15 (218) ±15%
for X=03	= 00	4 (60)	1 (15)	2-8 (30-115)

Note: Special settings available. Contact factory authorized representative for ordering code

Type	Material number
04840200850400A	R901109874
04840200850800A	R901109875
048402008515000	R930001018
04840203850000A	R901109876

Type	Material number