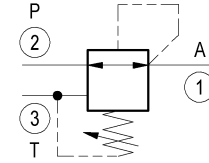
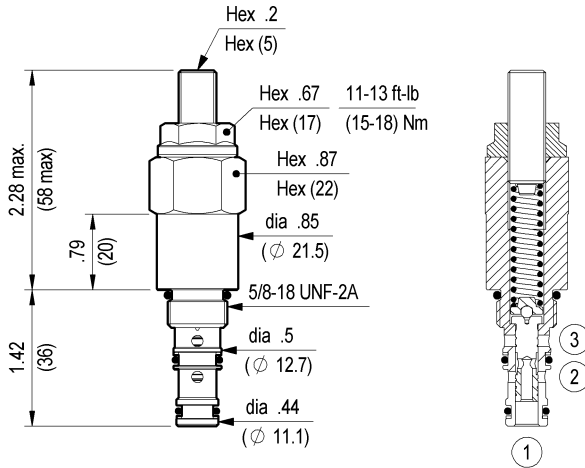


**PRESSURE REDUCING AND RELIEVING,
 DIRECT ACTING SPOOL TYPE
 SPECIAL CAVITY**

VRPR-07A

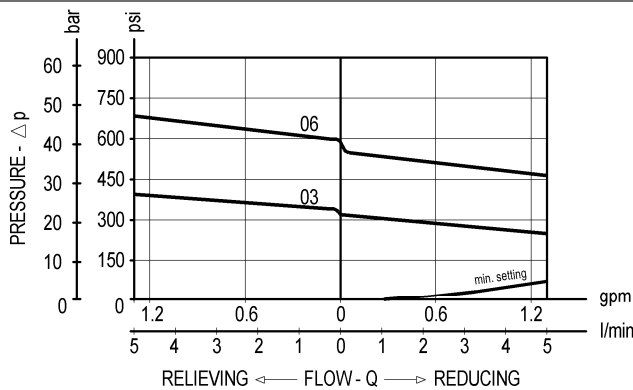
04.95.08 - X - 99 - Z



TECHNICAL DATA

Max. pressure:	6000 psi	(420 bar)
Max. flow:	1.3 gpm	(5 l/min)
Int. leakage ave. :	3 in ³ /min	(50 cm ³ /min)
Special cavity :	CA-07A-3N (see page CT.S.005.U)	
Installation torque :	18-20 ft-lb	(24-27 Nm)
Weight:	0.309 lbs	(0.140 Kg)

Initially, flow passes freely from 2 to 1. When the pressure at 1 exceeds the pressure setting, the valve acts to restrict input flow at 2. This increases the pressure drop through the valve and maintains consistent pressure at 1. The spring chamber is drained at 3 to prevent a build-up of back-pressure against the spool. Additionally, if pressure at 1 rises above the pressure setting, flow is relieved to 3 until the setting is re-attained.



X ADJUSTMENTS

03 Leakproof hex. socket screw



SPRINGS

Z	Adj. press. range psi (bar)	Press. increase psi / turn (bar/turn)	Standard setting psi (bar) (reduc. mode)
03	75-435 (5-30)	51 (3.5)	290-360 (20-25)
06	145-870 (10-60)	94 (6.5)	580-650 (40-45)