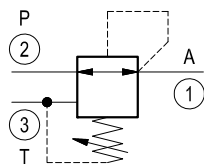
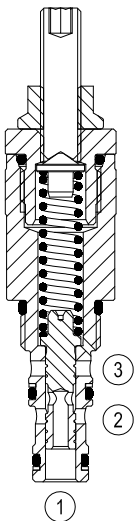
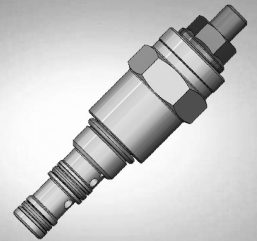


# Pressure reducing and relieving, direct acting spool type

Special cavity

VRPR-07A

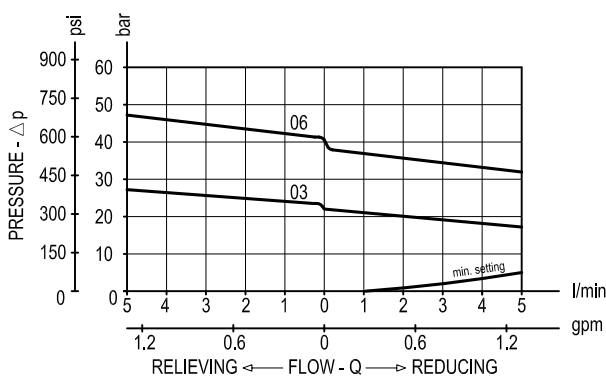
04.95.08 - X - 99 - Z



## Description

Initially, flow passes freely from 2 to 1. When the pressure at 1 exceeds the pressure setting, the valve acts to restrict input flow at 2. This increases the pressure drop through the valve and maintains consistent pressure at 1. The spring chamber is drained at 3 to prevent a build-up of back-pressure against the spool. Additionally, if pressure at 1 rises above the pressure setting, flow is relieved to 3 until the setting is re-attained.

## Performance



## Technical data

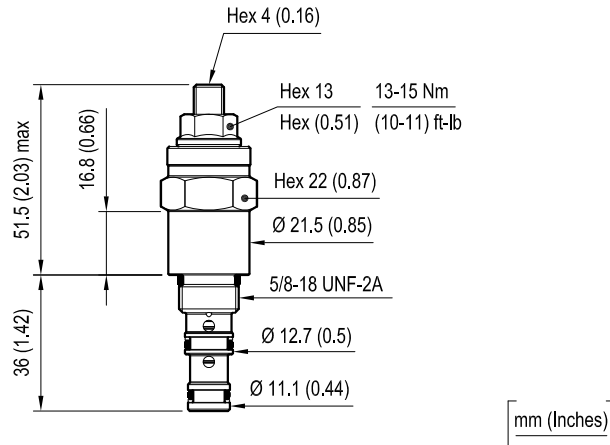
Max. operating pressure port 2 (P)	bar (psi)	420 (6000)
Max. pressure admitted port 1 (A)	bar (psi)	70 (1000)
Max. flow	l/min. (gpm)	5 (1.3)
Max. internal leakage (*)	cm <sup>3</sup> /min. (cu.in./min.)	50 (3)
Fluid temperature range	°C (°F)	-30 to 100 (-22 to 212)
Installation torque	Nm (ft-lbs)	24-27 (18-20)
Weight	kg (lbs)	0.14 (0.31)
Special cavity		CA-07A-3N see data sheet RE 18325-75
Seal kit (**)	code material no.	RG07A3010520100 R930001701
Fluids		Mineral-based or synthetics with lubricating properties at viscosities of 10 to 500 mm <sup>2</sup> /s (cSt)
Filtration		Nominal value max. 10µm (NAS 8) ISO 4406 19/17/14
Installation		No restrictions
Other general technical data		See data sheet RE 18350-50

(\*) 1 - 3 to 80% of pressure setting

(\*\*) Only external seals for 10 valves

## Dimensions

Leakproof hex. socket screw



## Ordering code

04.95.08	X	99	Z	00	*
----------	---	----	---	----	---

Pressure reducing and relieving, direct acting spool type

Adjustments  
= 91 Leakproof hex. socket screw

Special cavity, CA-07A-3N

Series O/A to L  
unchanged performances and dimensions

Version and options standard

SPRINGS			
	Adj. press. range bar (psi)	Pressure increase bar/turn (psi/ turn)	Std. setting bar (psi) (reduc mode)
= 03	5-30 (75-435)	4.5 (65)	20-25 (290-360)
= 06	10-60 (145-870)	8 (116)	40-45 (580-650)

**Note:** Special settings available. Contact factory authorized representative for ordering code

Type	Material number
049508919903000	R930006721
049508919906000	R930006722

Type	Material number