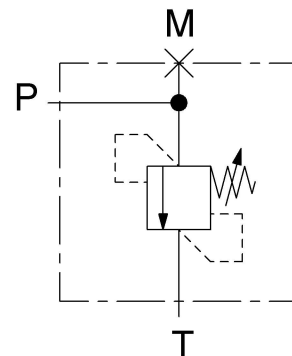


Max. pressure: 210 bar
Max. flow: up to 240 l/min

PRESSURE SETTINGS
Std. setting: 350 bar 5 l/min
Adj. pressure range: 120-350 bar
pressure increase 62 bar/turn

Manifold: Aluminium

Port size:
P, T = G 1 ISO 1179-1
M = G 1/4 ISO 1179-1



For dimensions without tolerance, consider ± 0.5 mm

All dimensions : mm

Denominazione / Denomination VSDC-250-100-35-A		Rexroth Bosch Group Bosch Rexroth Oil Control S.p.A. Ufficio Tecnico DC-MA/ECM Gerarchia Prodotto 876200790 Product Hierarchy		
Specifiche / Specifications	-			-
-	-			-
Massa / Mass (kg) 1,700	Cliente e codice articolo / Customer and article code	-	Kit guarniz. / Seal kit -	
Richiesta / Request UT11950	Num. schema idraulico / Hydraulic scheme no.	-	Modifiche / Changes	
Tipo cavità / Cavity type A4	Studio di riferimento / Reference study	-	Sostituisce il / Replaces 051203030535000	
Disegnato / Designed by Ferraresi	Data / Date 03/05/12	-	Codice / Code 05120303053500A	
Verificato / Checked by Ortiz	Scala / Scale 1:2	-	Material number R930007014	
Disegno di proprietà BOSCHREXROTH OIL CONTROL S.p.A. tutelato ai termini di legge. E' vietata la riproduzione e la diffusione non autorizzata. This drawing is a property of BOSCH REXROTH OIL CONTROL S.p.A. protected according to the laws. Unauthorized reproduction and distribution is strictly prohibited.		Direttorio del file Cad / Cad file directory K:\Design\Cad 3D\Ingombri\05120303053500A		