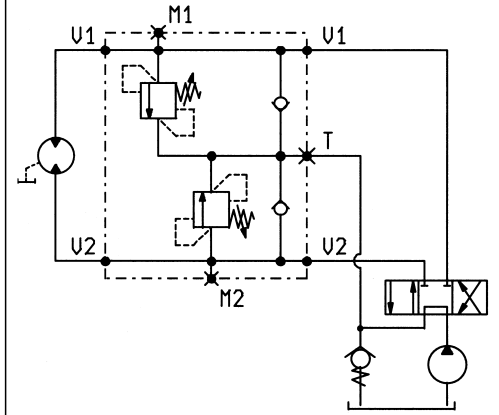
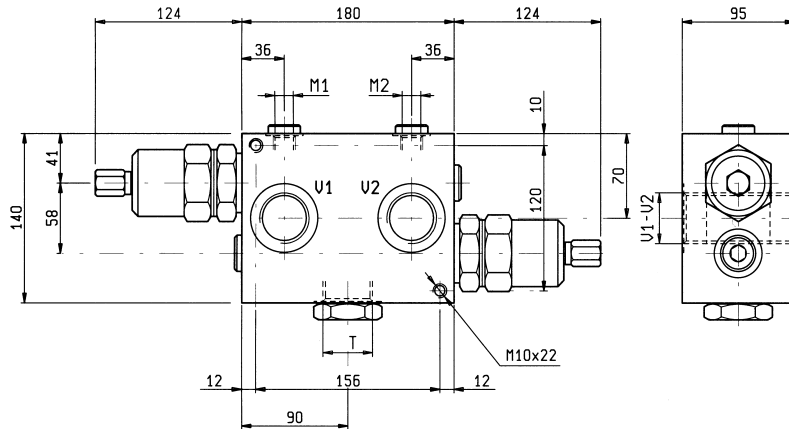


VSDI-DI-VA-350

05.15.03 - X - Y - Z

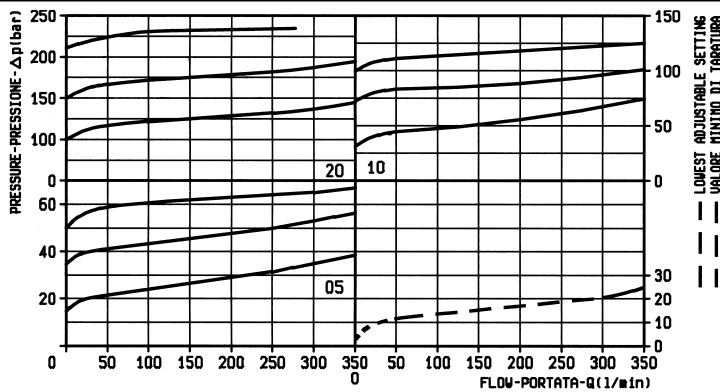
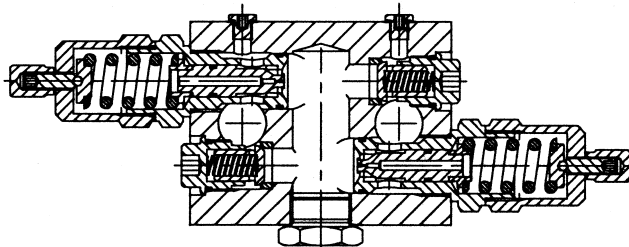


DATI TECNICI / TECHNICAL DATA

Pressione di lavoro max. 210 bar
Max. working pressure

Portata max. 350 l/min
Flow max.

Peso 9.1 kg
Weight



X

**REGOLAZIONI
ADJUSTMENTS**

03

vite interna
esagono incassato
leakproof inner hex.
socket screw



MOLLE / SPRINGS

Z	Campo taratura min - max bar Adj. press. range bar	Incremento press. bar / giro vite Press. increase bar / turn	Taratura standard bar (Q = 5 l/min) Std. setting bar (Q = 5 l/min)	Cod. ordinazione Ordering code	Colore Colour
05	15-50	9	50	03.51.01.065	nero black
10	35-100	18	100	03.51.01.064	blu blue
20	80-210	37	200	03.51.01.044	verde green

Y

ATTACCHI / PORT SIZE

06

V1-V2-T	M1-M2
G 1 1/4	G 1/4