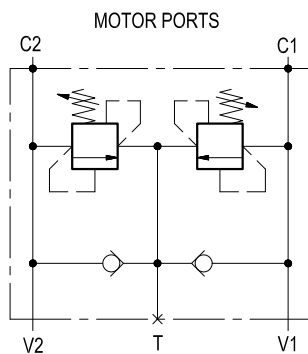


## Dual cross over relief, direct acting, with anti-cavitation check valves, flangeable to motor



VSDI-VA-80-FM

05.16.15 - X - Y - Z



### Description

It relieves the inlet pressure from either one of the supply lines and it protects the motor from shocks or pressure surges induced by changes in direction or by sudden stops. The dual relief is of the cross over type, and exhausted oil is transferred to the other line (from V1 into V2 and vice-versa) to prevent cavitation. An extra tank port (T), with 2 checks, allows to make up for any drain or exhausted flow and ensures that the motor is always full.

### Technical data

#### Hydraulic

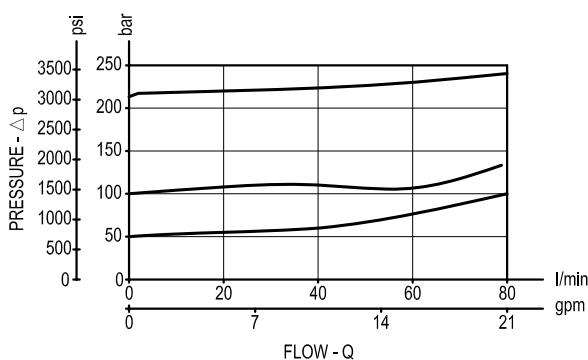
Operating pressure	bar (psi)	up to 210 (3000)
Max. flow	l/min (gpm)	80 (21)

Flangeable on REXROTH motors A2FE-28-32 series

For relief cartridge details, see RE 18318-25 (VS-80 041105X99Z)

Each cartridge can be individually pressure set.

### Performance

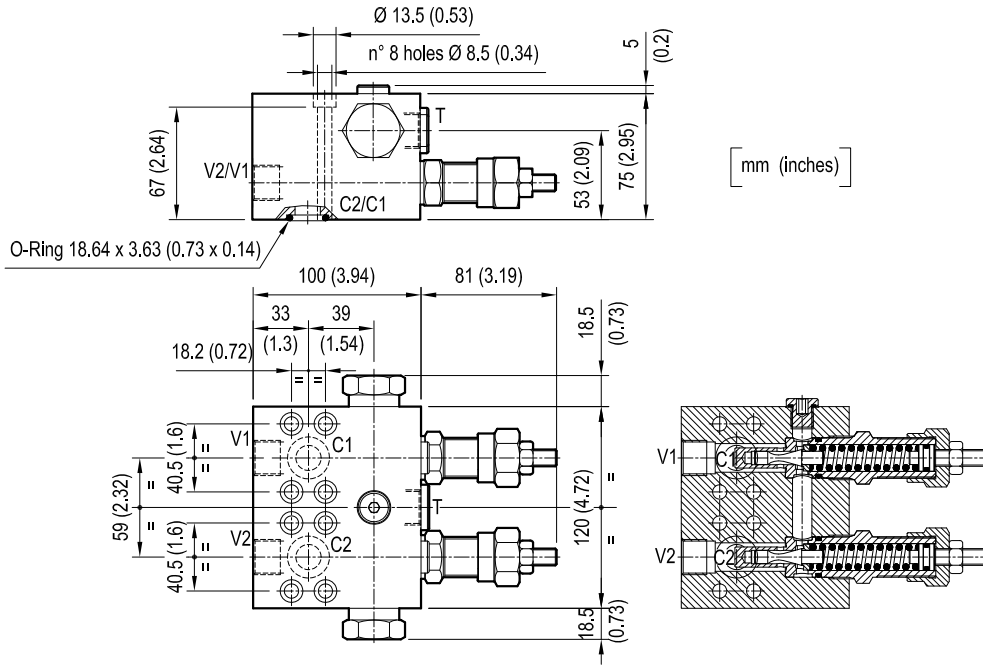


### General

Manifold material	Aluminium	
Note: aluminium bodies are often strong enough for operating pressures exceeding 210 bar (3000 psi), depending from the fatigue life expected in the specific application. If in doubt, consult our Service Network.		
Weight	kg (lbs)	3.1 (6.8)
Fluid temperature range	°C (°F)	between -30 (-22) and +100 (212)
Other technical data	see data sheet RE 18350-50	

**Note:** for applications outside these parameters, please consult us.

Dimensions




Ordering code

<b>05.16.15</b>	<b>X</b>	<b>Y</b>	<b>Z</b>
-----------------	----------	----------	----------

Dual cross over relief, with anti-cavitation check valves, flangeable to motor


Adjustments

= 03 Leakproof hex. socket screw 

Port sizes	V1-V2	T	C1-C2
= 03	G 1/2	G 1/2	$\text{Ø } 15 (0.59)$

SPRINGS

	Adj. pressure range bar (psi)	Pres. increase bar/turn (psi/turn)	Std. setting Q=5 (l/min.) bar (psi)
= 20	80-250 (1160-3600)	27 (392)	200 (2900)

Tamper resistant cap  
code 11.04.23.003  
R930000754 

Type	Material number
05161503032000A	R930001377

Type	Material number