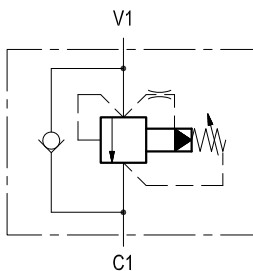
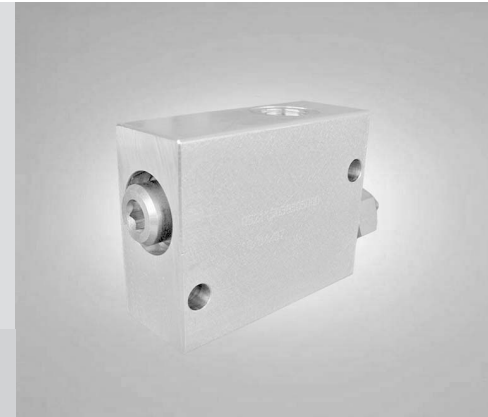


Sequence, pilot operated spool type

VSQP-150

05.21.15 - X - Y - Z



Description

Initially, the flow goes to a side line connected to V1, not shown here, and energizes a first actuator until pressure increases to meet the selected valve setting; then flow opens the relief cartridge and passes from V1 to C1 energizing the second actuator connected to C1. The relief cartridge is pilot operated and combines stability with low pressure drop. Note that pressure at C1, i.e. the pressure needed to operate the second actuator, is additive to the relief setting of the valve. The check valve allows reverse flow, from C1 to V1.

Technical data

Hydraulic

Operating pressure	bar (psi)	up to 210 (3000)
Max. flow	l/min (gpm)	150 (40)

Leakage: 100 cc/min (6 in³/min) at max relief setting.

Pressure drop curves are shown with zero back pressure on "C1" port.

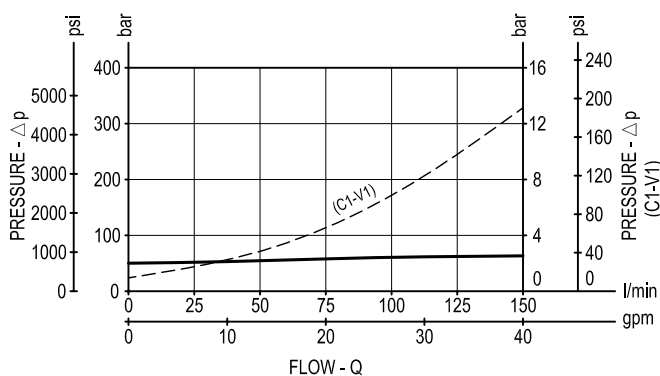
This valve is successfully employed when the pressure needed to move the secondary actuator is not very high.

General

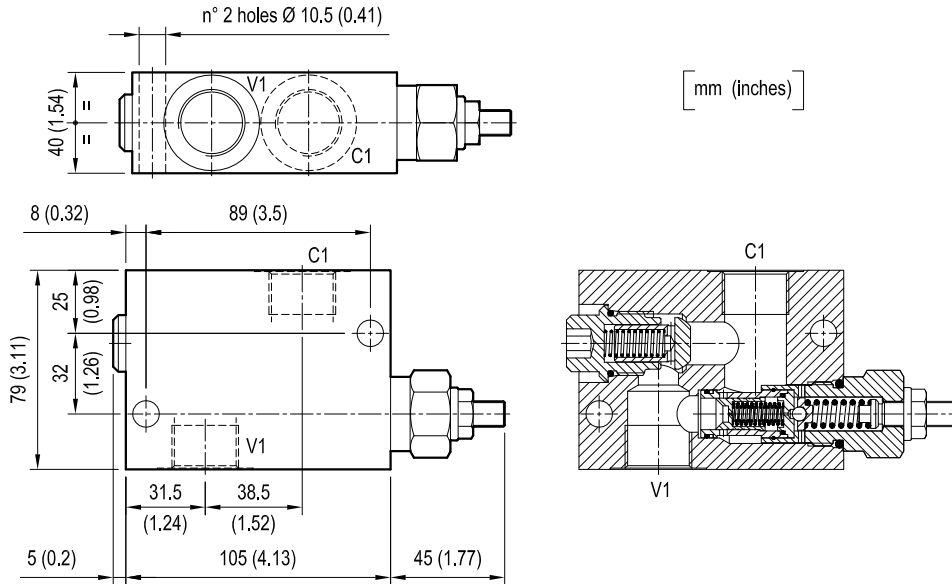
Manifold material	Aluminium	
Note: aluminium bodies are often strong enough for operating pressures exceeding 210 bar (3000 psi), depending from the fatigue life expected in the specific application. If in doubt, consult our Service Network.		
Weight	kg (lbs)	1.07 (2.36)
Fluid temperature range	°C (°F)	between -30 (-22) and +100 (212)
Other technical data	see data sheet RE 18350-50	

Note: for applications outside these parameters, please consult us.

Performance



Dimensions




Ordering code


05.21.15	X	Y	Z
-----------------	----------	----------	----------

Sequence, pilot operated spool type

Adjustments

= 03 Leakproof hex. socket screw 

SPRINGS			
	Adj. pressure range bar (psi)	Pres. increase bar/turn (psi/turn)	Std. setting Q=5 (l/min.) bar (psi)
= 05	3-70 (44-1000)	20 (290)	50 (725)

Tamper resistant cap
code 11.04.23.004 

Port sizes	V1	C1	
= 03	G 1/2	G 1/2	
= 04	G 3/4	G 3/4	

Type	Material number
052115030305000	R930001438
052115030405000	R930001953

Type	Material number