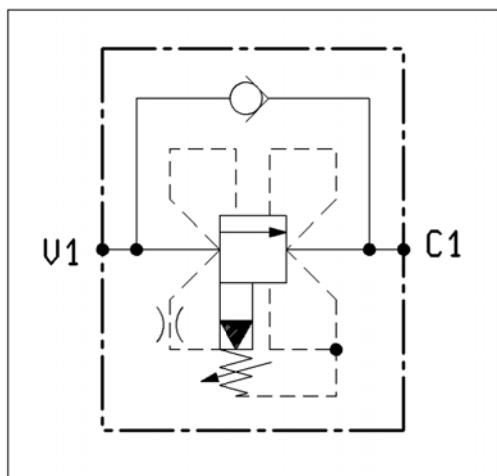
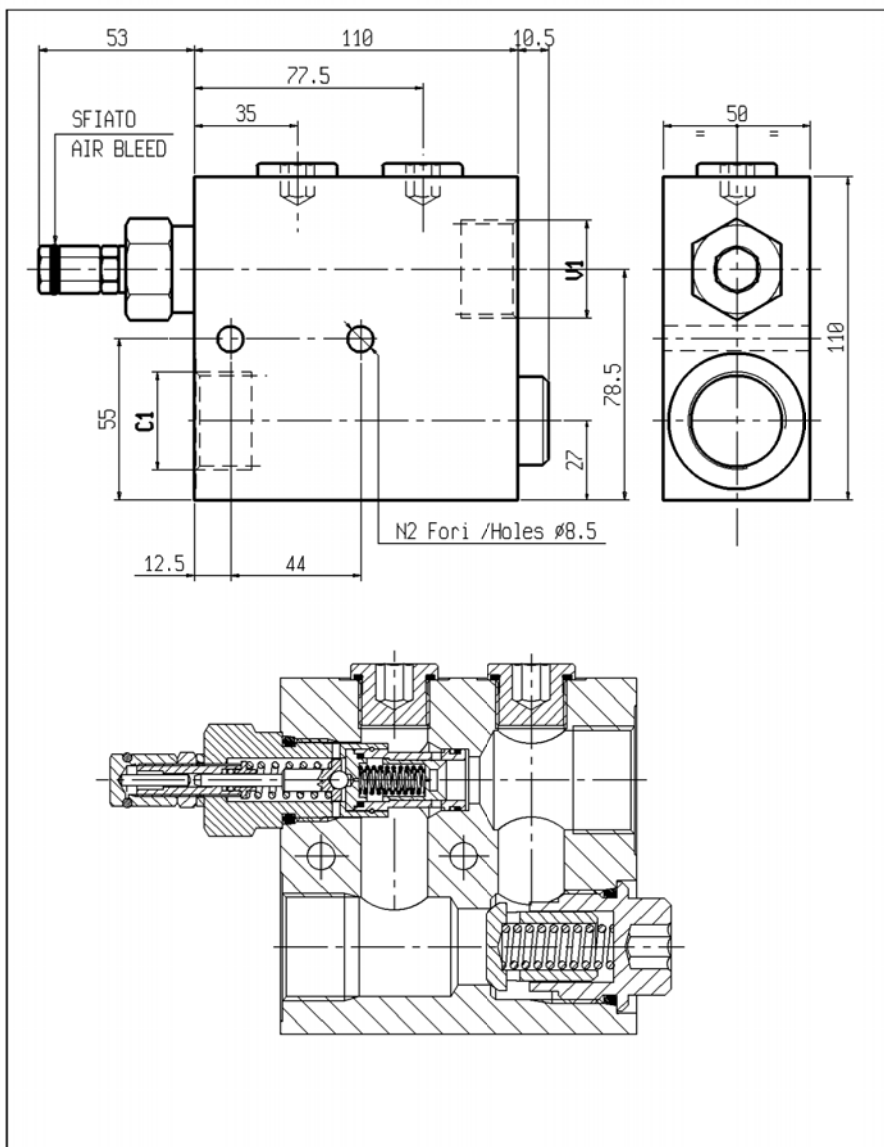




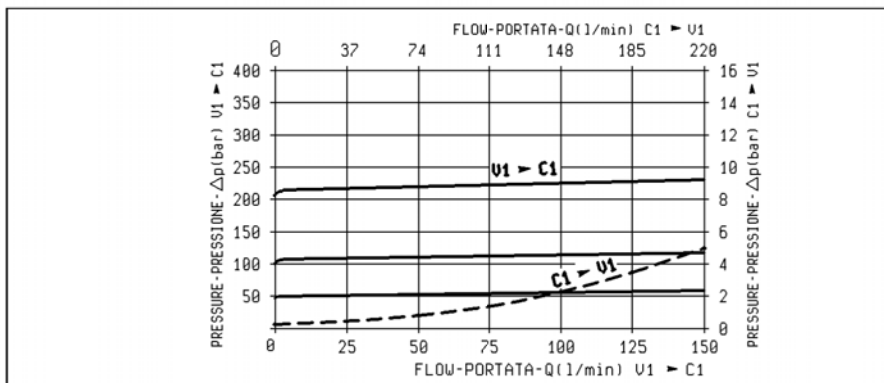
SEQUENZA, COMPENSATE, PILOTATE, OTTURATORE CILINDRICO  
 PILOT OPERATED, SPOOL TYPE, SELF COMPENSATED SEQUENCE

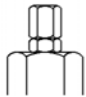
USQP-CC-150-100-20

05.24.13 - X - Y - Z



|   |           |
|---|-----------|
| Pressione di lavoro max.<br>Max. working pressure   | 210 bar   |
| Portata max.<br>Flow max.   | 150 l/min |
| Peso<br>Weight.   | 1.78 kg   |
| Funzionamento corretto con pressione sul circuito secondario non inferiore a 20 bar.<br>For good performance, the pressure in the secondary circuit should not drop below 20 bar. |           |
| Trafilamento: circa 0.10 l/min alla massima pressione.<br>Leakage: 0.10 l/min approx at max relief setting.   |           |
| Trafilamento: circa 0.10 l/min alla massima pressione.<br>Leakage: 0.10 l/min approx at max relief setting.   |           |
| Classe di pulizia dell'olio: almeno 18/14 ISO 4406 (9 NAS-1638).<br>Fluid cleanliness class: 18/14 ISO 4406 (9 NAS-1638) or better.   |           |



|    |   |
|----|---|
| X  | <b>REGOLAZIONI<br/>ADJUSTMENTS</b>  |
| 03 | vite interna esagono incassato<br>leakproof inner hex. socket screw  |

| Z  | MOLLE/SPRINGS                                       |  |  |                                     |                  |
|----|---|--|--|-------------------------------------|------------------|
|    | Campo taratura min-max bar<br>Adj. press. range bar | Incremento pressione bar/giro vite<br>Pressure increase bar/turn | Taratura standard bar (Q=5 l/min)<br>Std. setting bar (made at= 5 l/min) | Codice ordinazione<br>Ordering code | Colore<br>Colour |
| 20 | 10-210  | 35   | 200  |                                     | verde<br>green   |

| Y  | ATTACCHI/PORT SIZE |  |
|----|--------------------|--|
|    | U1-C1              |  |
| 05 | G 1                |  |