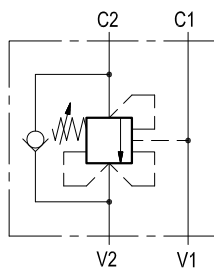


Single counterbalance, relief compensated

VBSO-SE-CC

05.41.06 - X - Y - Z



Description

When pressure at V2 rises above the spring bias pressure, the check valve poppet is pushed away from the piston and flow is allowed from V2 to C2. When load pressure at C2 rises above the pressure setting, the relief function is activated and flow is relieved from C2 to V2. With pilot pressure at V1–C1, the pressure setting is reduced in proportion to the pilot ratio, until opening and allowing flow from C2 to V2. The spring chamber is drained to V2. The valve applies a balanced piston allowing relief operation at the valve setting independent of back-pressure at V2. However, the piloted opening of the valve remains subject to additive pressure at port V2.

Technical data

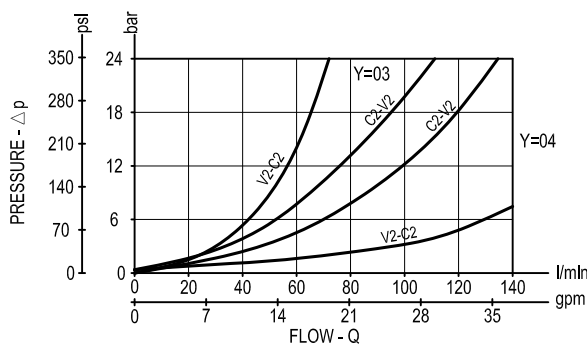
Hydraulic

Operating pressure	bar (psi)	up to 210 (3000)
--------------------	-----------	------------------

Max. flow: see performance graph

Relief setting: at least 1.3 times the highest expected load.

Performance



General

Manifold material	Aluminium
-------------------	-----------

Note: aluminium bodies are often strong enough for operating pressures exceeding 210 bar (3000 psi), depending from the fatigue life expected in the specific application. If in doubt, consult our Service Network.

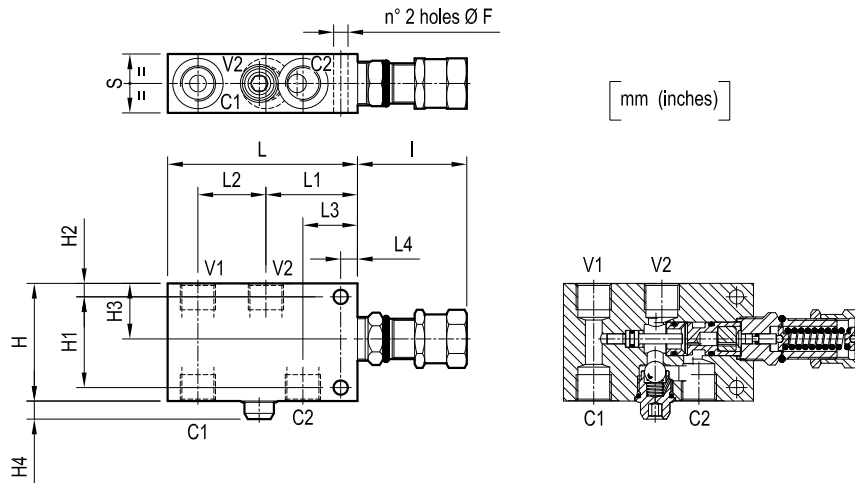
Weight	see "Dimensions"
--------	------------------

Fluid temperature range	°C (°F)	between -30 (-22) and +100 (212)
-------------------------	---------	----------------------------------

Other technical data	see data sheet RE 18350-50
----------------------	----------------------------

Note: for applications outside these parameters, please consult us.

Dimensions



[mm (inches)]

40 (1.58)	10 (0.39)	34 (1.34)	54.5 (2.15)	62.5 (2.46)	135 (5.32)	65 (2.56)	11 (0.43)	38 (1.5)	9.5 (0.37)	70 (2.76)	89 (3.5)	10.5 (0.41)	G 3/4	1.42 (3.13)
35 (1.38)	10 (0.39)	32.5 (1.28)	40.5 (1.6)	54.5 (2.15)	113 (4.55)	65 (2.56)	11 (0.43)	33.5 (1.32)	7.5 (0.3)	54 (2.13)	70 (2.76)	8.5 (0.34)	G 1/2	0.9 (1.98)
S	L4	L3	L2	L1	L	I	H4	H3	H2	H1	H	F	Y	Weight kg (lbs)

Ordering code

05.41.06	X	Y	Z
-----------------	----------	----------	----------

Single counterbalance,
relief compensated

Pilot ratio

= 02 8.2:1

= 10 3.2:1

SPRINGS		
Adj. pressure range bar (psi)	Pres. increase bar/turn (psi/turn)	Std. setting Q=5 (l/min.) bar (psi)
= 20 60-210 (870-3000)	54 (783)	200 (2900)
= 35 100-350 (1450-5000)	95 (1378)	350 (5000)

Port sizes	V1-V2	C1-C2
= 03	G 1/2	G 1/2
= 04	G 3/4	G 3/4

Type	Material number
054106020320000	R930001670
05410602033500A	R930001671
054106020420000	R930001674
05410602043500A	R930001675
054106100320000	R930001678
05410610033500A	R930001680
054106100420000	R930001941
054106100435000	R930001687

Type	Material number