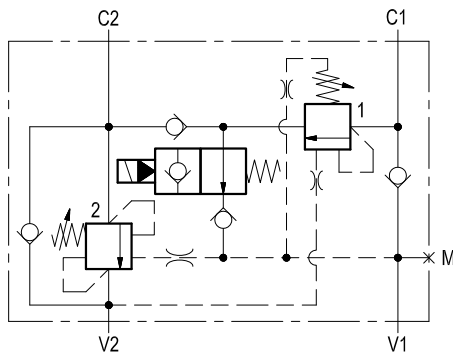
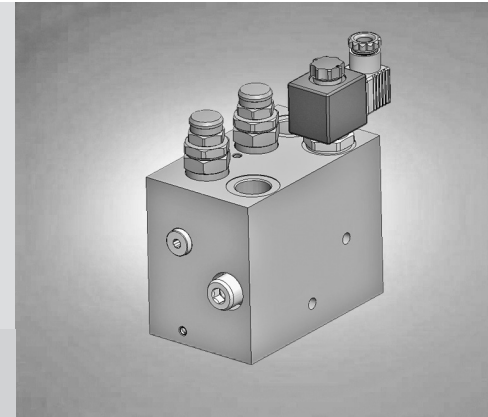


Dual counterbalance with regenerative function, solenoid controlled

VBSO-DE-CR-EE-33

05.44.81 - X - Y - Z



Description

It provides static and dynamic control of load by regulating the flow IN and OUT of the cylinder, through ports C2 and C1. This valve module includes a pilot assisted counterbalance (2) on the line C2-V2 for control of the full bore side of the cylinder, a check valve between V1 and C1 which allows flow into the annular side and locks in reverse direction, a pilot assisted by-pass counterbalance "fully vented type" (1) which can feed into the full bore (C2) the flow coming out from the annular side (C1) in order to increase the extension speed. A normally open solenoid cartridge controls the by-pass flow from valve (1) and diverts it either to V1 (for low speed extension) or to C2 (high speed extension with regenerative mode).

Technical data

Hydraulic

Operating pressure	bar (psi)	up to 210 (3000)
Max. flow	l/min (gpm)	100 (26)

Relief setting: at least 1.3 times the highest expected load.

Electrical

Nominal voltage	V	24 DC
Power	W	20

For other details see data sheet RE 18325-90

General

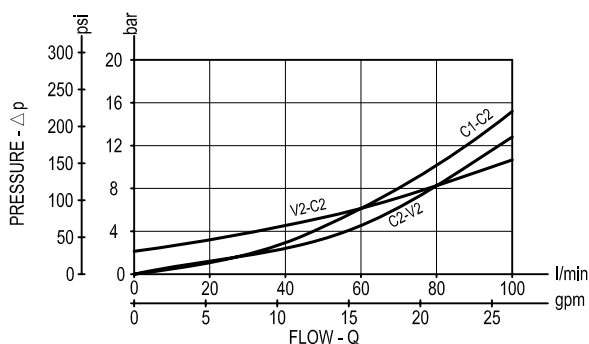
Manifold material	Aluminium	
-------------------	-----------	--

Note: aluminium bodies are often strong enough for operating pressures exceeding 210 bar (3000 psi), depending from the fatigue life expected in the specific application. If in doubt, consult our Service Network.

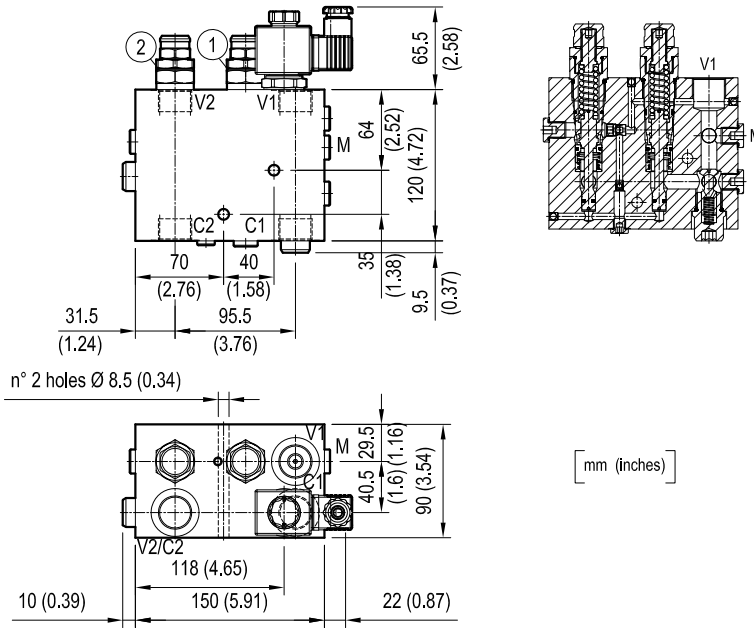
Weight	kg (lbs)	5.3 (11.7)
Fluid temperature range	°C (°F)	between -30 (-22) and +100 (212)
Other technical data	see data sheet RE 18350-50	

Note: for applications outside these parameters, please consult us.

Performance



Dimensions



Ordering code

05.44.81	X	Y	Z
-----------------	----------	----------	----------

Dual counterbalance with regenerative function, solenoid controlled

Pilot ratio

= 03 4:1 Valve 1 / Valve 2

Port sizes

V1 - V2

C1 - C2

M

= 04

G 3/4

G 3/4

G 1/4

SPRINGS

		Adj. pressure range bar (psi)	Pres. increase bar/turn (psi/turn)	Std. setting Q=5 (l/min.) bar (psi)
= 35	Valve 1	100-350 (1450-5000)	110 (1595)	350 (5000)
	Valve 2	100-350 (1450-5000)	110 (1595)	350 (5000)

Type	Material number
05448103043500E	R930007133

Type	Material number