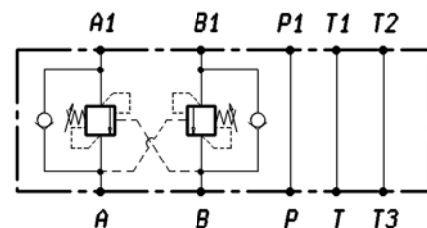
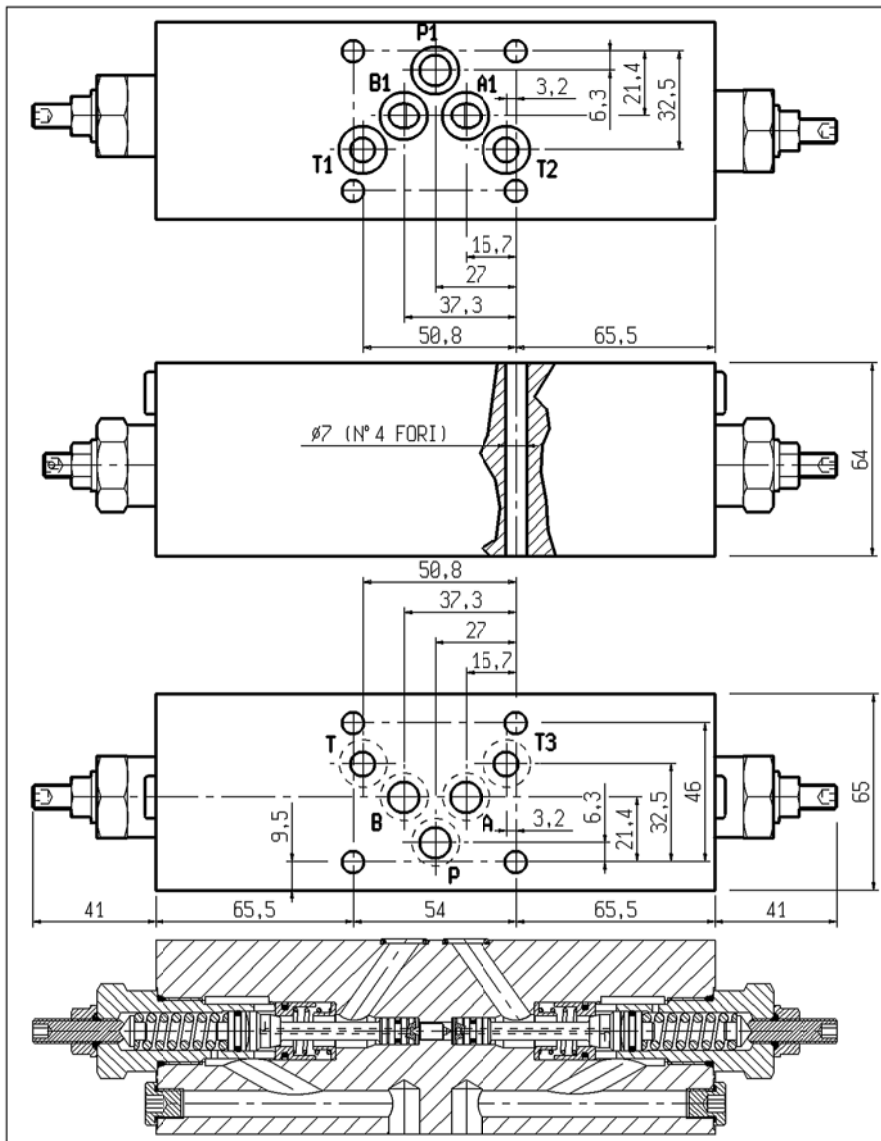




BILANCIAMENTO, DOPPIO EFFETTO, SERIE *90* FLANGIABILI
 DUAL PILOT ASSISTED, SERIES *90*, FLANGEABLE OVERCENTRE

UBS0-DE90-2-CETOP-5

05.44.90 -X - Y - Z



DATI TECNICI / TECHNICAL DATA

Pressione di lavoro max. 350 bar
 Max. working pressure

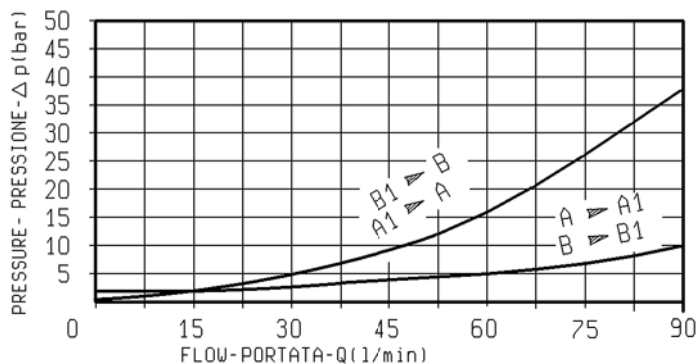
Portata max. vedi diagramma
 Flow max. see the performance flow

Peso
 Weight.

Rapporto di pilotaggio 4,2 : 1
 Pilot ratio

Taratura della valvola: almeno 1,3 volte superiore alla pressione indotta dal carico
 Pressure setting: at least 1,3 times the load induced pressure

Cappello per piombatura Codice/Ordering code
 Sealing Cap 11.04.23.002



X	RAPPORTO DI PILOTAGGIO PILOT RATIO
03	4,2 : 1

Z	MOLLE/SPRINGS				
	Campo taratura min-max bar Adj. press. range bar	Incremento pressione bar/giro vite Pressure increase bar/turn	Taratura standard bar (Q = 5 l/min) Std. setting bar (Q = 5 l/min)	Codice ordinazione Ordering code	Colore Colour
35	100 - 350	138	350	03.51.01.171	giallo yellow

Y	ATTACCHI/PORT SIZE
	T-T1-T2-T3-A-B-A1-B1-P-P1
43	CETOP 5 (F10)

DESIGN/cataloghi/A4/054490034335000_0.d