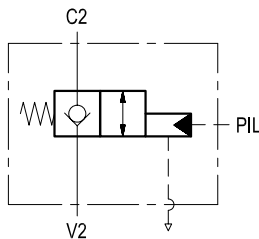


Pilot operated check, single vented pilot piston

VSO-SE-PS

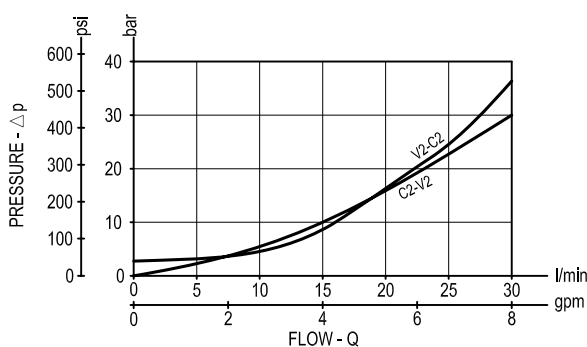
05.52.24 - X - Y - Z



Description

Flow is allowed to pass from V2 to C2 when pressure at V2 rises above the spring bias pressure and the poppet is pushed from its seat. The valve is normally closed (checked) from C2 to V2; when sufficient pilot pressure is present at Pil the pilot piston acts to push the poppet from its seat and flow is allowed from C2 to V2. The pilot piston is vented and the pilot pressure required to push the poppet from its seat is independent from any back-pressure at V2 port.

Performance



Technical data

Hydraulic

Operating pressure	bar (psi)	up to 210 (3000)
Max. flow	l/min (gpm)	30 (8)
Pilot ratio		10 : 1

Whenever possible, it is recommended to remove the air bleed plug and to connect the port (G 1/8) to tank.

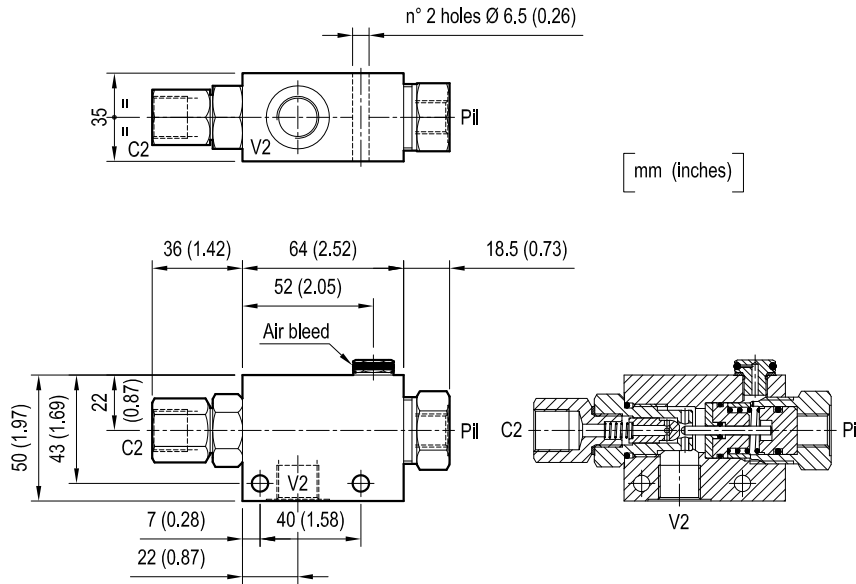
The version with heavier spring is generally recommended.

General

Manifold material		Aluminium
Note: aluminium bodies are often strong enough for operating pressures exceeding 210 bar (3000 psi), depending from the fatigue life expected in the specific application. If in doubt, consult our Service Network.		
Weight	kg (lbs)	0.5 (1.1)
Fluid temperature range	°C (°F)	between -30 (-22) and +100 (212)
Other technical data		see data sheet RE 18350-50

Note: for applications outside these parameters, please consult us.

Dimensions



Ordering code

05.52.24	X	Y	Z
----------	---	---	---

Pilot operated check, single vented pilot piston

O-Ring on pilot piston

= 00 No O-Ring

Port sizes	V2	C2	Pil
= 02	G 3/8	G 3/8	G 1/4

SPRINGS

Cracking pressure
bar (psi)

= 00	2 (29)
= 01	8 (116)

Type	Material number
055224000200000	R930002335
055224000201000	R930002336

Type	Material number