

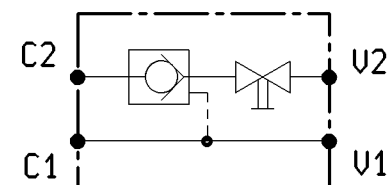
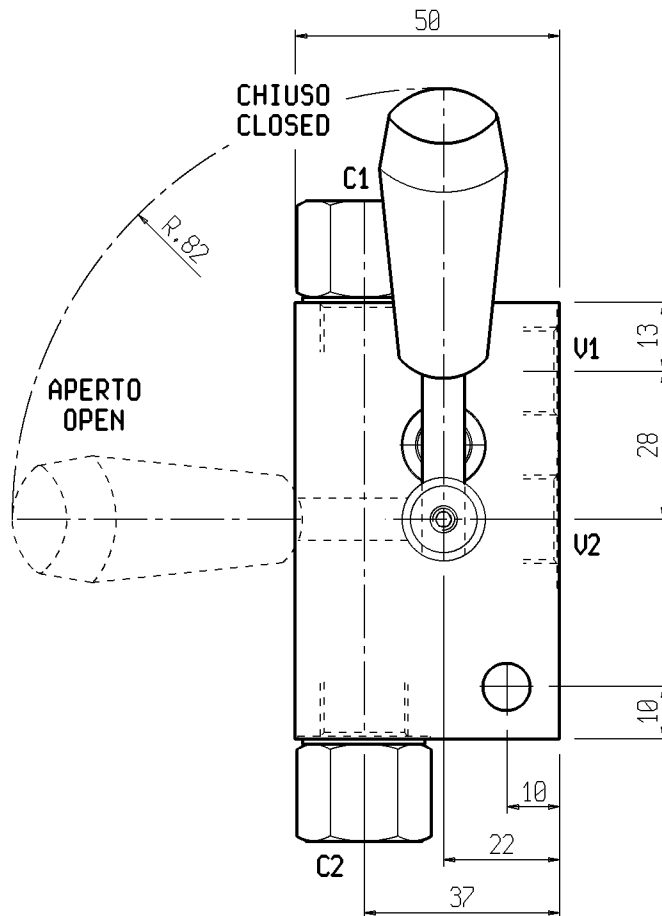
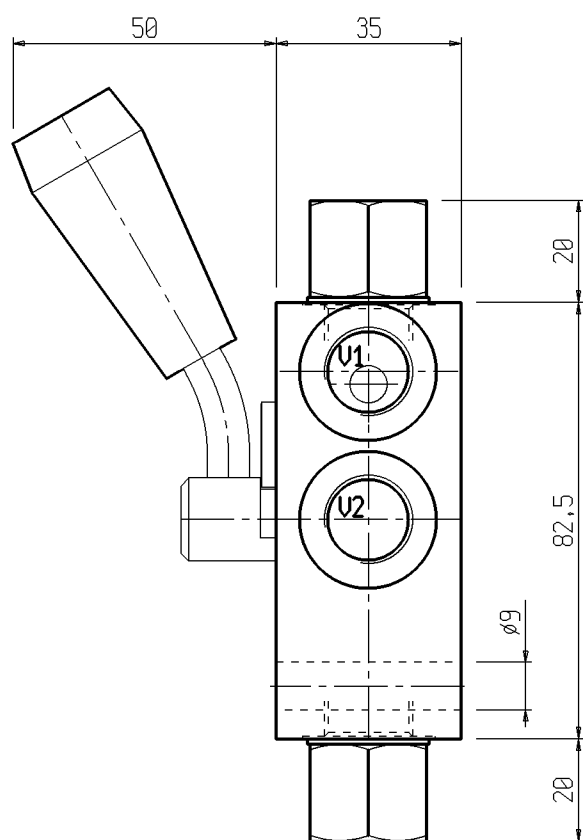
PILOT OPERATED CHECK VALVES
WITH MANUAL SHUT-OFF

VSO-SE-DL-R-G-3814NA-SX

05.52.26.10.02.09.00.C

DENOMINAZIONE VALVOLA
VALVE DENOMINATION

CODICE D'ORDINAZIONE
ORDERING CODE



Pressione di lavoro max
350 bar

Portata max
30 l/min.

Rapporto di pilotaggio
4,6 : 1

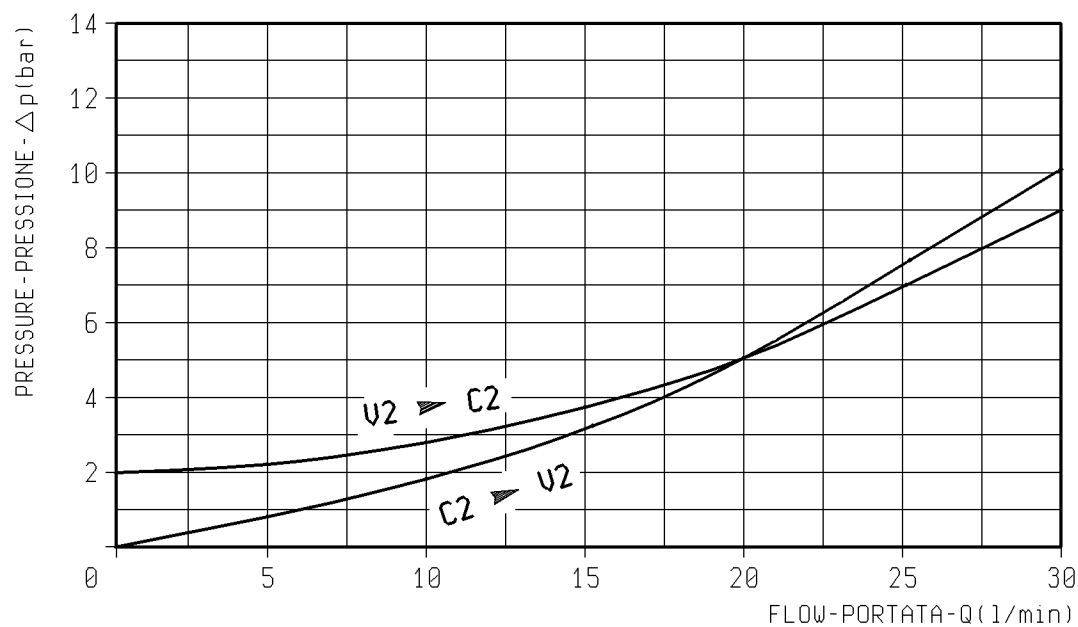
Peso Kg 0,80

Max working pressure
350 bar

Flow max
30 l/min.

Pilot ratio
4,6 : 1

Weight Kg 0,80



GUARNIZIONE SUL PISTONE DI PILOTAGGIO O-RING ON PILOT PISTON	
con guarnizione with o-ring	

MOLLE - SPRINGS			
	Inizio apertura (bar) Cracking pressure (bar)	Codice ordinazione Ordering code	
	1	03.51.01.107	

ATTACCHI / PORT SIZE	
U1 - U2	C1 - C2
3/8" BSPP	1/4" BSPP