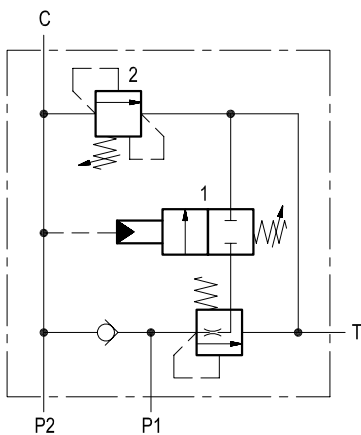
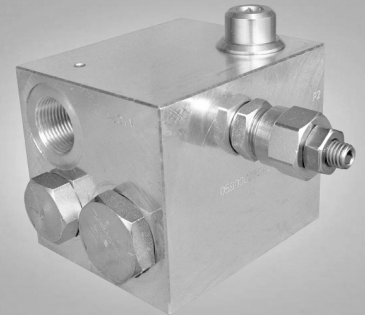


Pump unloading

VEP-VSP2

05.90.06 - X - Y - Z



Description

Through the check valve, the pump inlet P1 is combined to the inlet P2 to give maximum flow out of C at low pressure. As load pressure (C) increases and reaches the selected unloading setting, the pilot piston (1) is displaced and exhausts to tank the spring chamber of the main spool allowing P1 pump to be by-passed to tank. Above this pressure threshold, only P2 pump continues to deliver oil out of C, with a resulting reduced flow at high pressure. The incorporated relief cartridge (2) provides protection by limiting the maximum pressure in the system line (C).

Technical data

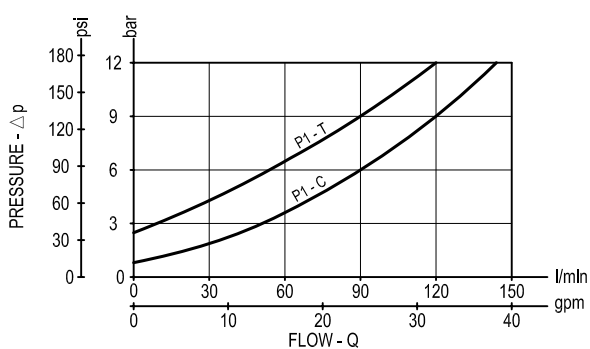
Hydraulic

Operating pressure	bar (psi)	P1 = 100 (1450) P2 = 210 (3000)
Max. flow of valve 2	l/min (gpm)	30 (8)

General

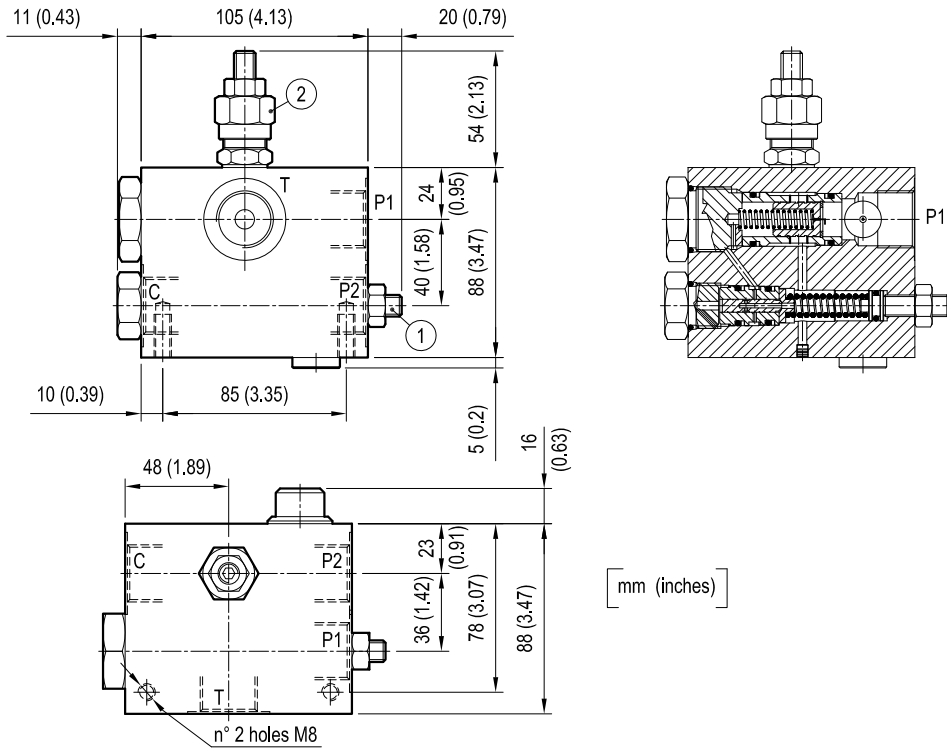
Manifold material	Aluminium	
Note: aluminium bodies are often strong enough for operating pressures exceeding 210 bar (3000 psi), depending from the fatigue life expected in the specific application. If in doubt, consult our Service Network.		
Weight	kg (lbs)	2.5 (5.5)
Fluid temperature range	°C (°F)	between -30 (-22) and +100 (212)
Other technical data	see data sheet RE 18350-50	

Performance



Note: for applications outside these parameters, please consult us.

Dimensions




mm (inches)

Ordering code

05.90.06	X	Y	Z
-----------------	----------	----------	----------

Pump unloading

Adjustments

= 03 Leakproof hex. socket screw 

Port sizes	P1 - P2	C	T
= 04	G 3/4	G 3/4	G 3/4

		SPRINGS		
		Adj. pressure range bar (psi)	Pres. increase bar/turn (psi/turn)	Std. setting Q=5 (l/min.) bar (psi)
= 20	Valve 1	20-100 (290-1450)	24 (348)	50 (725)
	Valve 2	50-210 (725-3000)	47 (682)	200 (2900)
= 35	Valve 1	20-100 (290-1450)	24 (348)	50 (725)
	Valve 2	100-350 (1450-5000)	82 (1189)	300 (4350)

Tamper resistant cap
code 11.04.23.003



Type	Material number
059006030420000	R930002562
059006030435000	R930002563

Type	Material number