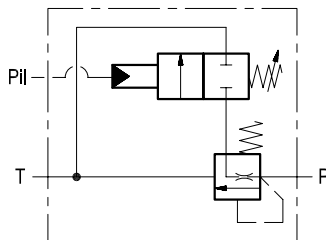


## Pilot operated unloading

BM-N

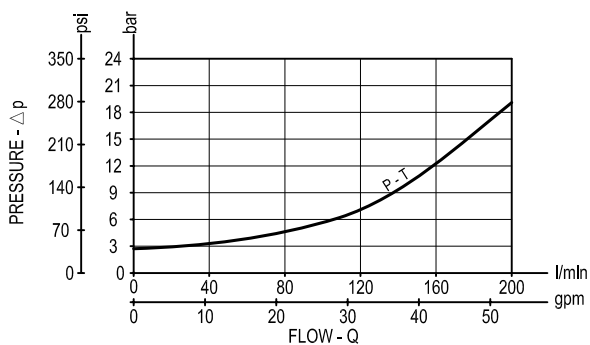
05.93.04 - X - Y - Z



### Description

This valve unloads a pump or a pressure line to tank when a pilot pressure is reached. Flow from P to T is normally blocked by the main spool; when pressure at Pil increases, and reaches the selected setting, it displaces the pilot piston and exhausts to tank the spring side of the main spool allowing it to shift and to open the flow unloading path from P to T. Back-pressure at T is additive to the unloading setting of the valve.

### Performance



### Technical data

#### Hydraulic

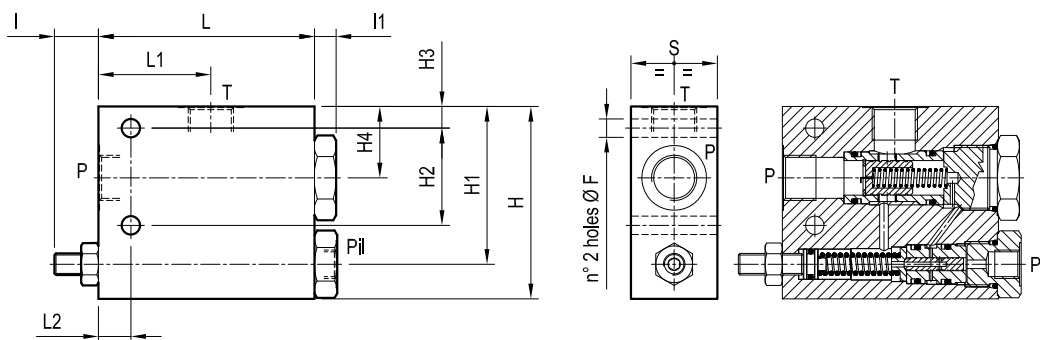
Operating pressure	bar (psi)	up to 210 (3000)
Max. flow	l/min (gpm)	200 (53)

#### General

Manifold material	Aluminium	
Note: aluminium bodies are often strong enough for operating pressures exceeding 210 bar (3000 psi), depending from the fatigue life expected in the specific application. If in doubt, consult our Service Network.		
Weight	See "Dimensions"	
Fluid temperature range	°C (°F)	between -30 (-22) and +100 (212)
Other technical data	see data sheet RE 18350-50	

**Note:** for applications outside these parameters, please consult us.

Dimensions



[ mm (inches) ]

40 (1.58)	15 (0.59)	52 (2.05)	100 (3.94)	10 (2.15)	21 (0.83)	49 (1.93)	25 (0.98)	45 (1.77)	89 (3.5)	105 (4.13)		8.5 (0.34)	G 3/4	1.35 (2.98)
40 (1.58)	15 (0.59)	52 (2.05)	100 (3.94)	10 (2.15)	21 (0.83)	33 (1.3)	10 (0.39)	45 (1.77)	73 (2.87)	89 (3.5)		8.5 (0.34)	G 1/2	1.3 (2.87)
S	L2	L1	L	I1	I	H4	H3	H2	H1	H		F	Y	Weight kg (lbs)

Ordering code

<b>05.93.04</b>	<b>X</b>	<b>Y</b>	<b>Z</b>
-----------------	----------	----------	----------

Pilot operated unloading

Adjustments

= 03 Leakproof hex. socket screw

Port sizes	P	T	Pii
= 03	G 1/2	G 1/2	G 1/4
= 04	G 3/4	G 3/4	G 1/4

SPRINGS

	Adj. pressure range bar (psi)	Pres. increase bar/turn (psi/turn)	Std. setting Q=5 (l/min.) bar (psi)
= 05	10-50 (145-725)	12 (174)	50 (725)
= 10	20-100 (290-1450)	24 (348)	100 (1450)
= 20	50-200 (725-2900)	47 (682)	200 (2900)
= 35	100-300 (1450-4350)	83 (1204)	300 (4350)

Type	Material number
059304030310000	R930002632
059304030320000	R930002633
059304030335000	R930002634
059304030405000	R930001961
059304030410000	R930001962
059304030420000	R930002636
059304030435000	R930002637

Type	Material number