

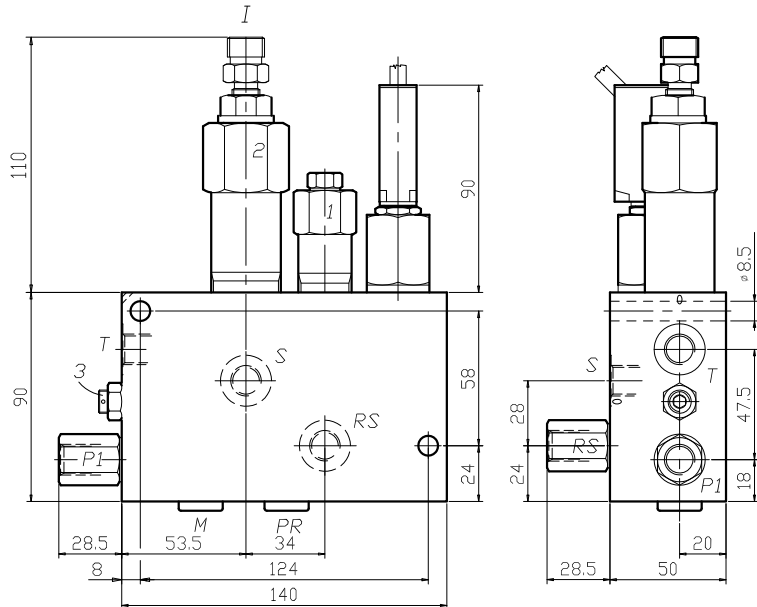
SEQUENCE ASSEMBLY FOR LOAD LIMITING SYSTEMS

LME-IPRPF-AI-3-2-14-35-E

05.93.27.03.09.35.00.E

DENOMINAZIONE VALVOLA  
VALVE DENOMINATION

CODICE D'ORDINAZIONE  
ORDERING CODE



These special sequence valves deliver the pressure to the secondary circuit when the primary pressure has reached an adjustable pre-set value.

With decreasing primary pressure they connect the secondary circuit to tank again. The basic pilot pressure setting can be compensated (increased) through the "I" port in order to take into account "induced" pressure.

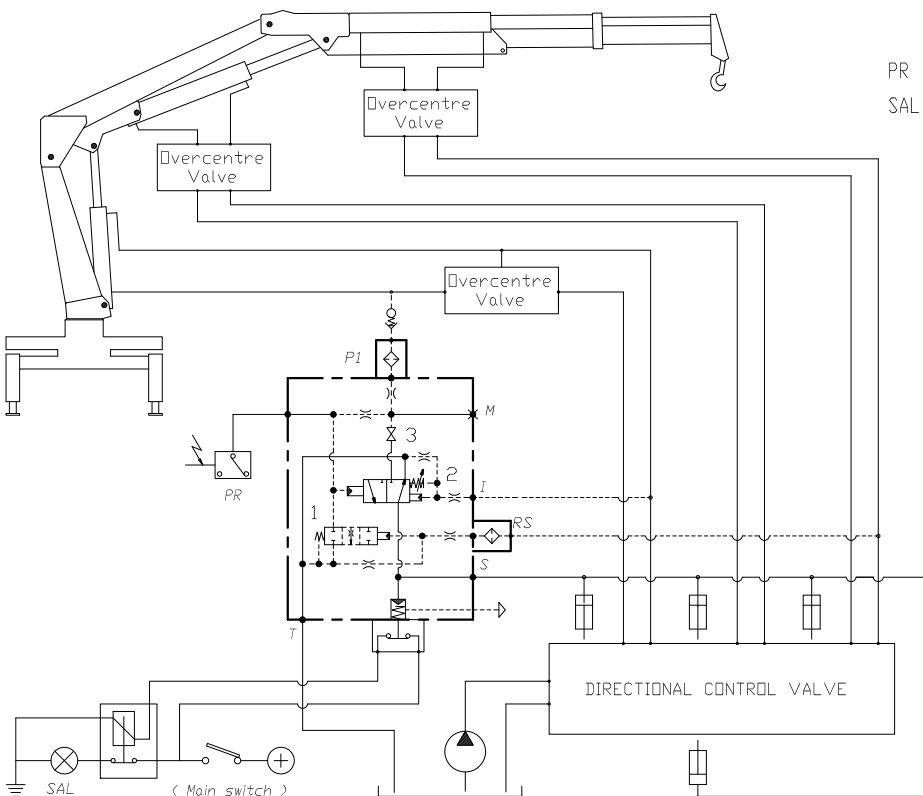
They are specially designed with minimized leakage and very limited hysteresis for applications as load limiting devices on truck loader cranes.

Maximum leakage: 3 cc/min.

Filtration level: 25 micron or better.

ATTACCHI - PORT SIZE	
I	S-T-P1-PR-RS-M
M16x1.5	G 1/4

Pressione di lavoro max 350 bar Max working pressure 350 bar	VALVOLA No 2	Campo taratura min-max bar Adj. press. range bar 80-350	Incremento pressione bar/giro vite Pressure increase bar/turn 18	Taratura standard bar(Q=5 l/1') Std. setting bar (made at 5 l/1') 280	Peso Kg.
					Weight Kg.



PR = FOR PRESSURE SWITCH MONITORING 90% LOAD  
SAL = OVERLOAD WARNING LIGHT / BUZZER

"RS" port  
For transient re-arming back from overload condition when first cylinder is pressurized at full stroke, and for hysteresis reduction.  
N.B. : It never inhibits the load limiting performance.

It is recommended to lock valves 2 and 3 after setting.