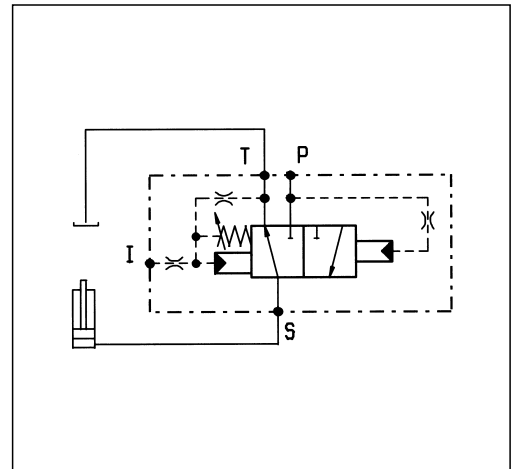
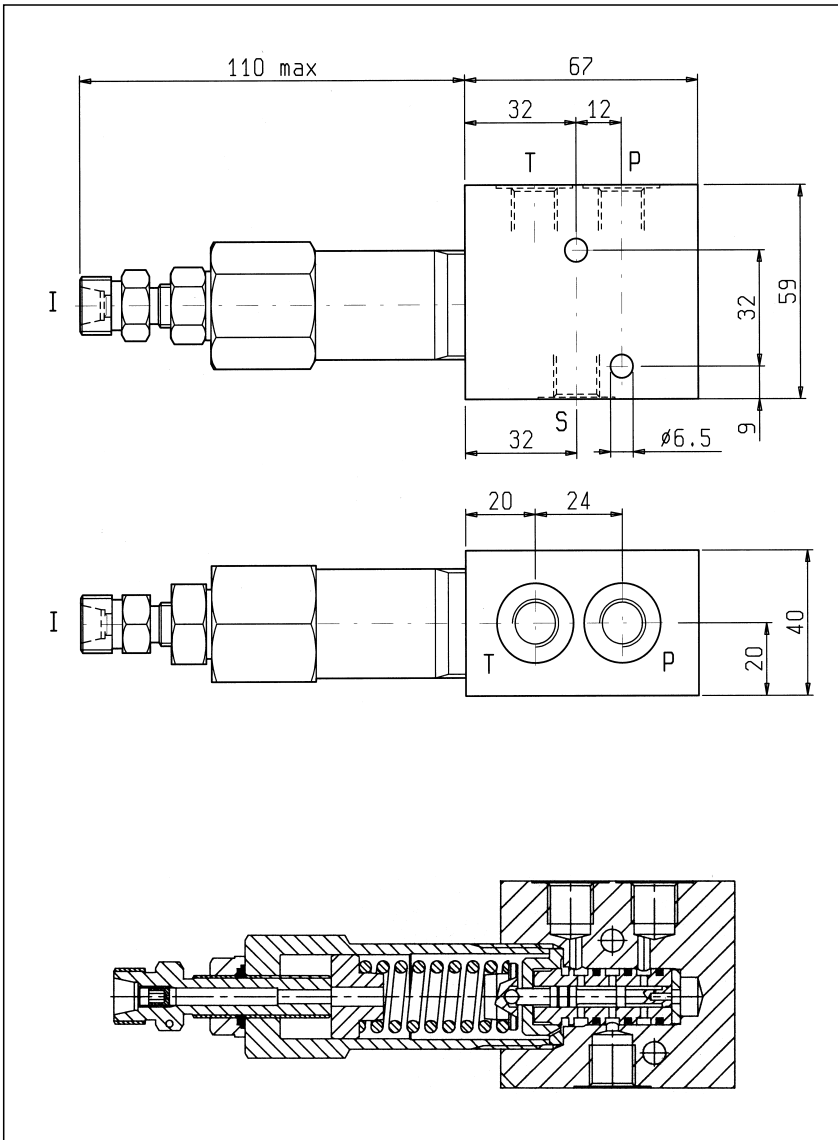


LM-IPRPF-C-3-2

05.93.28 - X - Y - Z



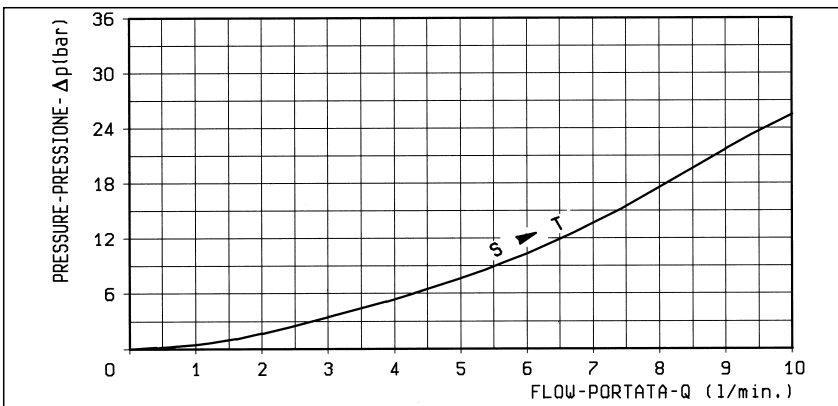
DATI TECNICI / TECHNICAL DATA

Pressione di lavoro max. 350 bar
Max. working pressure

Portata max. 8 l/min
Flow max.

Peso 0.82 kg
Weight

Trafilamento: circa 0.003 l/min al 90% della pressione di taratura standard.
Max leakage: 0.003 l/min at 90% of standard pressure setting.



X	REGOLAZIONI ADJUSTMENTS
03	vite esterna leakproof hex.

Z	MOLLE / SPRINGS				
	Campo taratura min - max bar Adj. press. range bar	Incremento press. bar / giro vite Press. increase bar / turn	Taratura standard bar (Q = 5 l/min) Std. setting bar (made at 5 l/min)	Cod. ordinazione Ordering code	Colore Colour
35	80-350	18	280	03.51.01.189	giallo yellow

Y	ATTACCHI / PORT SIZE	
	P-T-S	I
09	G 1/4	M16x1.5