

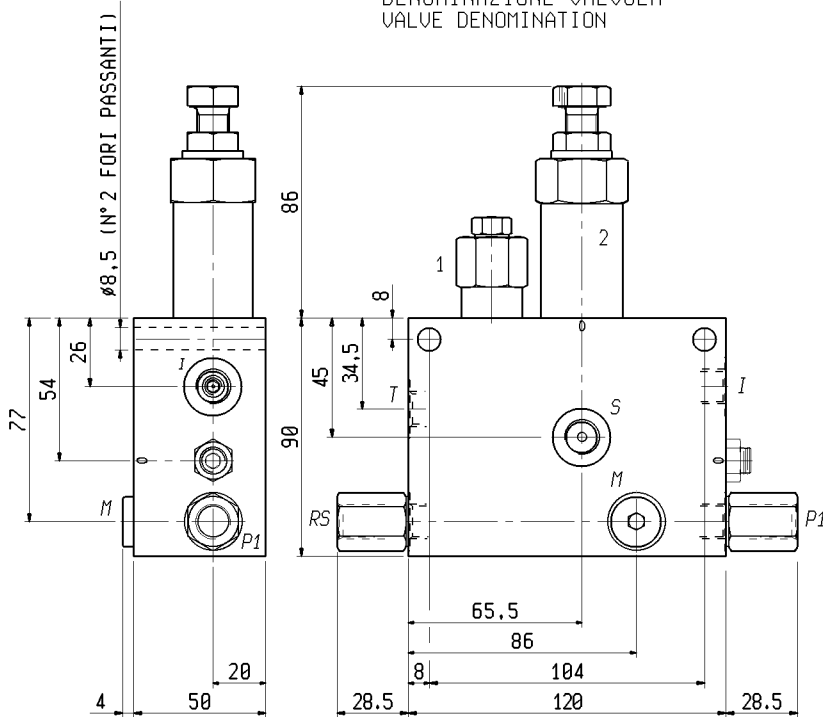
SEQUENCE ASSEMBLY FOR LOAD LIMITING SYSTEMS

LM-I-PRPF-R-3-2-14-35-R-B

05.93.35.03.09.35.00.B

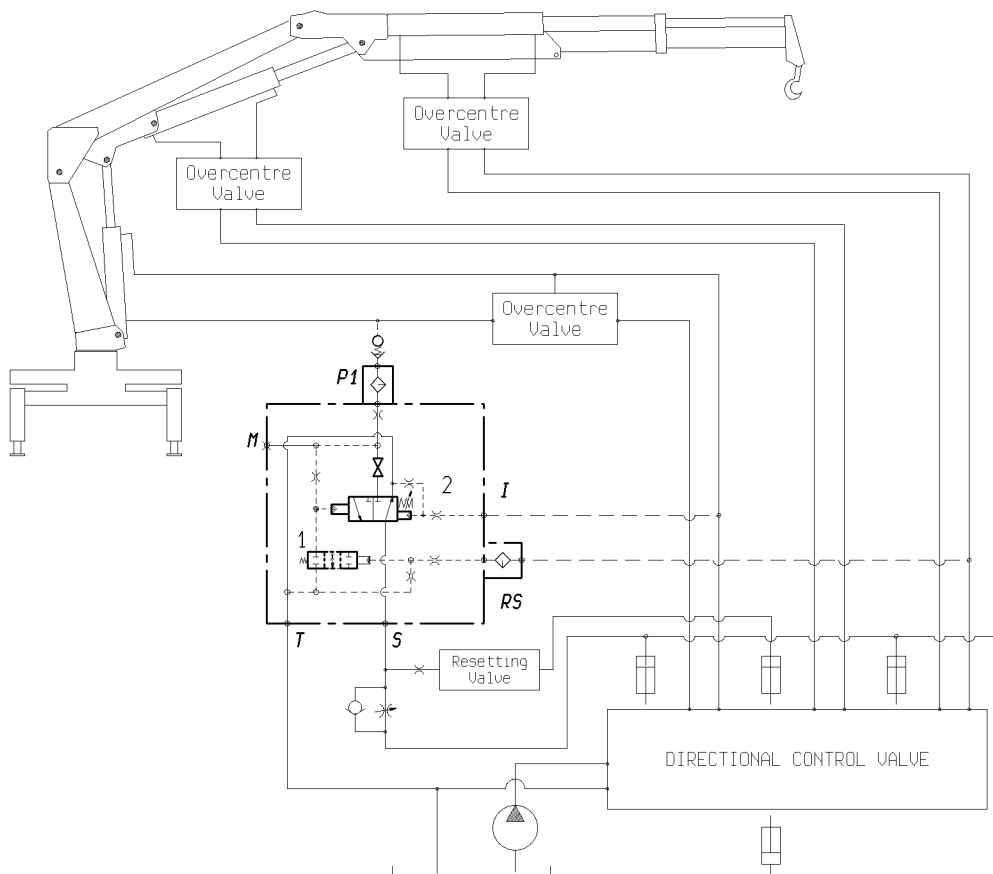
DENOMINAZIONE VALVOLA
VALVE DENOMINATION

CODICE D'ORDINAZIONE
ORDERING CODE



ATTACCHI - PORT SIZE	
S-T-P1-RS-M-I	
G 1/4	

Pressione di lavoro max 350 bar Max working pressure 350 bar	VALVE	Campo taratura min-max bar Adj.press. range bar	Incremento pressione bar/giro vite Pressure increase bar/turn	Taratura bar(0-5 1/1') Setting bar (made at 5 1/1')	Peso Kg. Weight Kg.
	No 2	80-350	18	290	



RS port
For transient re-arming back from overload condition when first cylinder is pressurized at full stroke, and for hysteresis reduction.
N.B. : It never inhibits the load limiting performance.

It is recommended to lock valves 2 and 3 after setting.

cata loghi/A4/05933503093500B