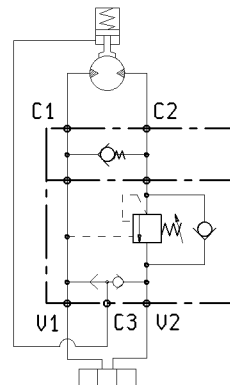
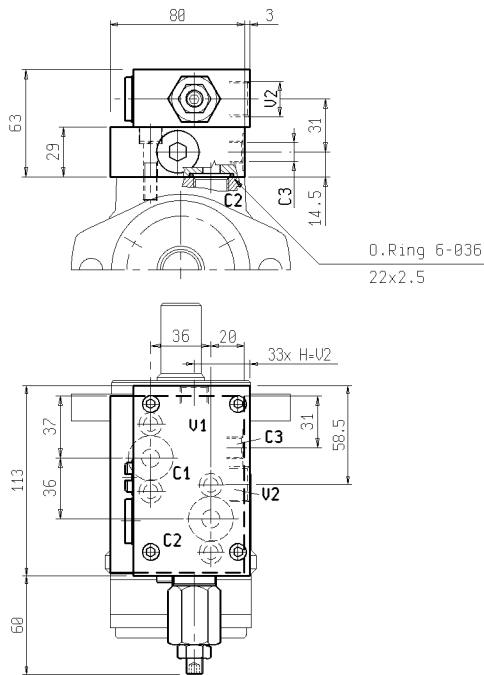


**PILOT ASSISTED OVERCENTRE VALVES FOR WINCHES**

Motor: DANFOSS  
Type: OMP-OMR

**UBS0-SE-FA-OMP-12-S-B**

**06.02.03.01.50.00.00.B**



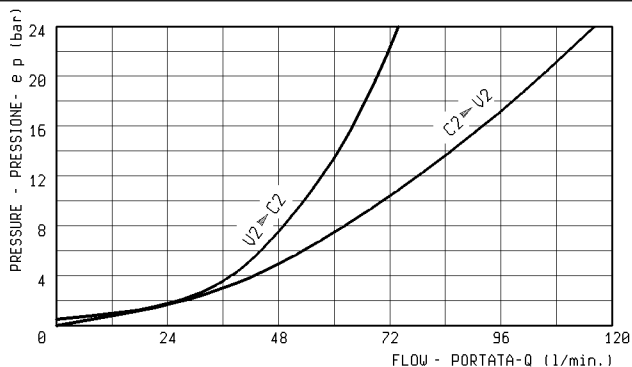
These load lowering valves prevent the winch from "running ahead" pulled by the load, and allow a cavitation free operation. The relief section limits the pressure shocks. They incorporate a shuttle valve to release through C3 port the fail safe brake. The special check valve allows to by-pass oil from "C1" to "C2" once the load is in the lowest position. The flange mounting ensures best efficiency, compact installation and cost saving. Filtration level: 50 micron or better. Leak proof seat design.

Pressione di lavoro max. 350 bar  
Max. working pressure 350 bar

Portata max. 70 l/min  
Flow max. 70 l/min

Peso  
Weight.

Taratura della valvola: almeno 1,3 volte superiore alla pressione indotta dal carico  
Pressure setting: at least 1,3 times the load induced pressure



**RAPPORTO DI PILOTAGGIO  
PILOT RATIO**

8.2 : 1

**MOLLE/SPRINGS**

Campo taratura min-max bar Adj.press. range bar	Incremento pressione bar/giro vite Pressure increase bar/turn	Taratura standard bar (Q=5 l/min) Std. setting bar (made at= 5 l/min)	Codice ordinazione Ordering code	Colore Colour
100-350	106	350	03.51.01.014	giallo yellow

**ATTACCHI/PORT SIZE**

U1 - U2	C3
G 1/2	G 1/4