

**PRESSURE SETTINGS**

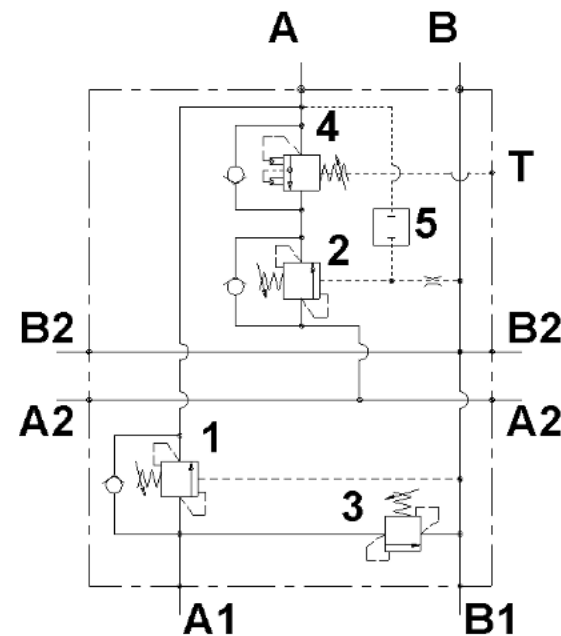
**Valve 1:**  
300 bar 5 l/min  
Pressure increase: 74 bar/turn

**Valve 2:**  
350 bar 5 l/min  
Pressure increase: 64 bar/turn

**Valve 3:**  
280 bar cracking pressure  
Pressure increase: 82 bar/turn

**Valve 4:**  
175 (0/+5) cracking pressure  
Pressure increase: 46 bar/turn

**Port size:**  
A-A1-B: G1"  
A2-B1-B2: G3/4"  
T: G1/4"



For dimensions without tolerance, consider  $\pm 0.5$  mm

All dimensions : mm

Denominazione / Denomination		<b>G.I.X AUTOC.SENZA ELET.-C</b>		<b>Rexroth</b> <b>Bosch Group</b> Bosch Rexroth Oil Control S.p.A.	
Specifiche / Specifications		-			
Massa / Mass (kg)		17,400		Ufficio Tecnico Technical Dep. <b>DC-MA/ECM</b>	
Richiesta / Request		UT11950		Gerarchia Prodotto Product Hierarchy <b>876200793</b>	
Tipo cavità / Cavity type		A3		Kit guarniz. Seal kit -	
Disegnato / Designed by		Zini		Modifiche Changes	
Verificato / Checked by		Ortiz		Sostituisce il Replaces <b>0701215800000B</b>	
Data / Date		04/05/12		Codice Code <b>0701215800000C</b>	
Scala / Scale		1:5		Material number <b>R930007016</b>	
Direttorio del file Cad / Cad file directory		K:\Design\Cad 3D\ngombri\07012158000000C			