

Inner socket screw hex.5

Port size:
 A-A1-A2 = G 3/4 ISO 1179-1
 B - B2 = G 3/4 ISO 1179-1
 B1 = G 1/2 ISO 1179-1
 M - T = G 1/4 ISO 1179-1

Customer code: RLC-1001

Manifold: black anodized aluminium.
 Note: aluminium bodies are often strong enough for operating pressures exceeding 210 bar (3045 psi), depending from the fatigue life expected in the specific application.

OPERATING PRESSURE
 A1 port: 300 bar
 A-B-B1-A2-B2 port: 250 bar

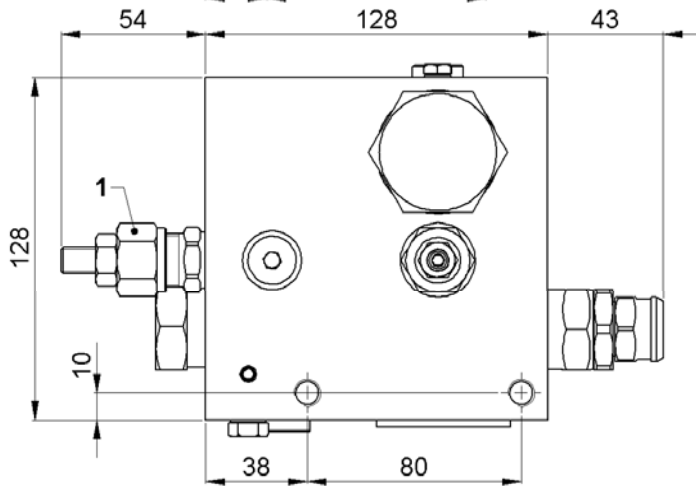
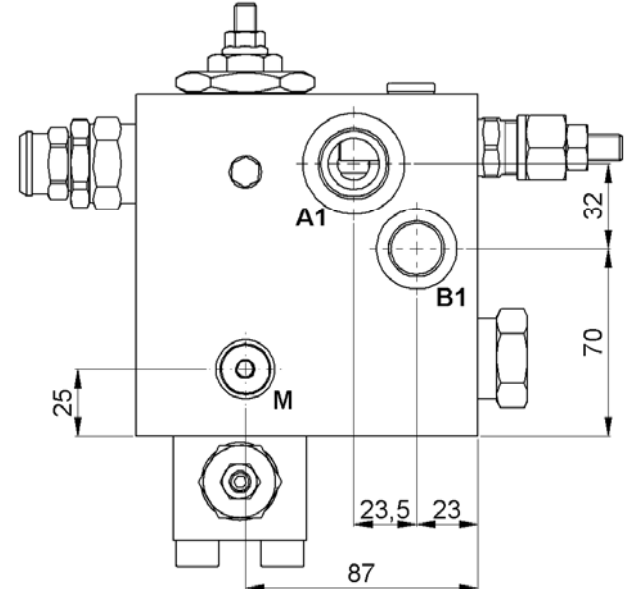
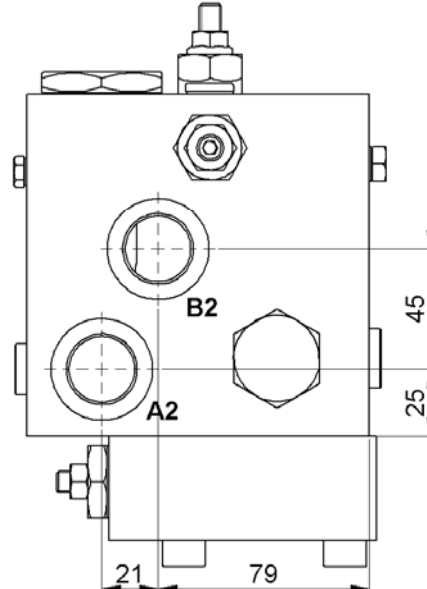
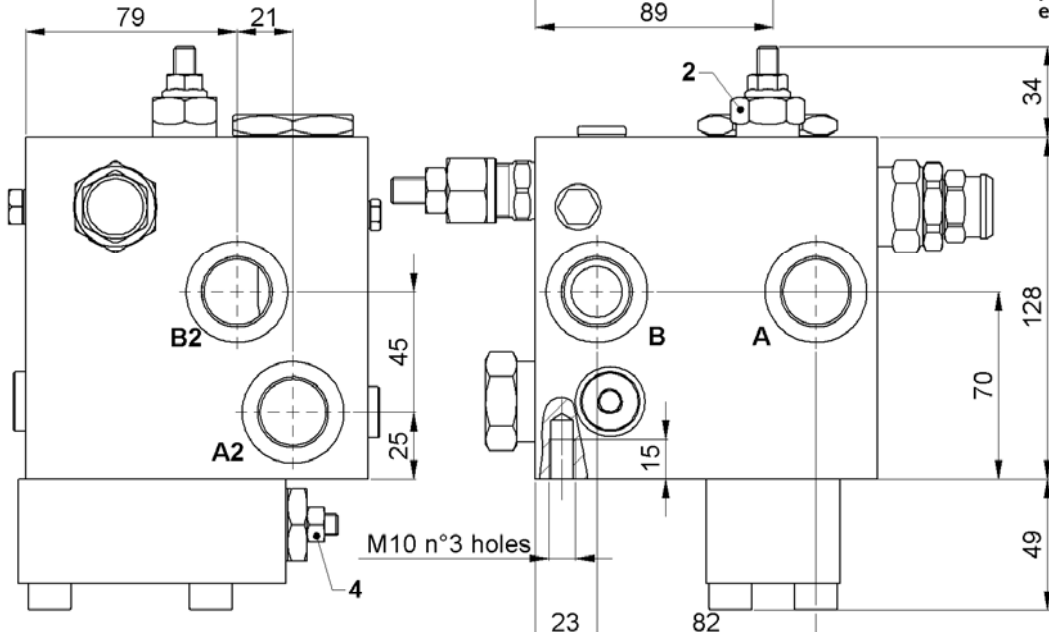
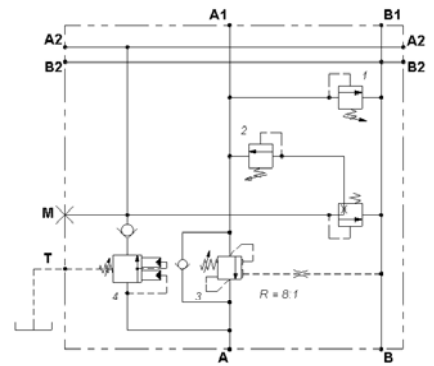
MAX. FLOW: 150 l/min

PRESSURE SETTINGS:
 Valve 1: 240 bar 5 l/min
 pressure increase 82 bar/turn

Valve 2: 50 bar 3 l/min
 pressure increase 48 bar/turn

Valve 3: 230 bar 5 l/min
 pressure increase 201 bar/turn
 Pilot ratio: 8:1

Valve 4: 140 bar 5 l/min
 pressure increase 46 bar/turn.



For dimensions without tolerance, consider ± 0.5 mm

All dimensions : mm

Denominazione / Denomination G.I.X AUTOCOMPATTATORI-C		Rexroth Bosch Group	
Specifiche / Specifications		Bosch Rexroth Oil Control S.p.A.	
Richiesta / Request UT11950		Ufficio Tecnico / Technical Dep. DC-MA/ECM	
Tipo cavità / Cavity type A3		Gerarchia Prodotto / Product Hierarchy 876200693	
Massa / Mass (kg) 7,000	Cliente e codice articolo / Customer and article code BEIJING MACROSTAR	Kit guarniz. / Seal kit -	
Studio di riferimento / Reference study -		Modifiche / Changes	
Disegnato / Designed by Grussu Data / Date 07/06/13		Sostituisce il / Replaces 07012599000001B	
Verificato / Checked by Ortiz Scala / Scale 1:2		Codice Code 07012599000001C	
Diretorio del file Cad / Cad file directory K:\Design\Cad 3D\Ingombri\07012599000001C		Material number R930007141	