

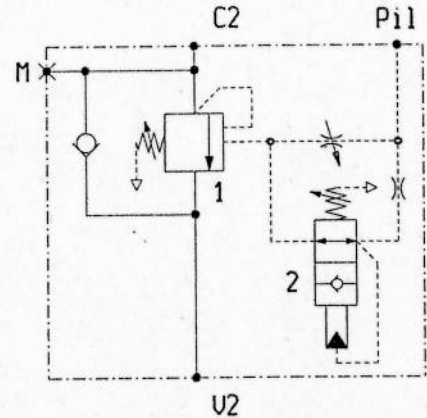
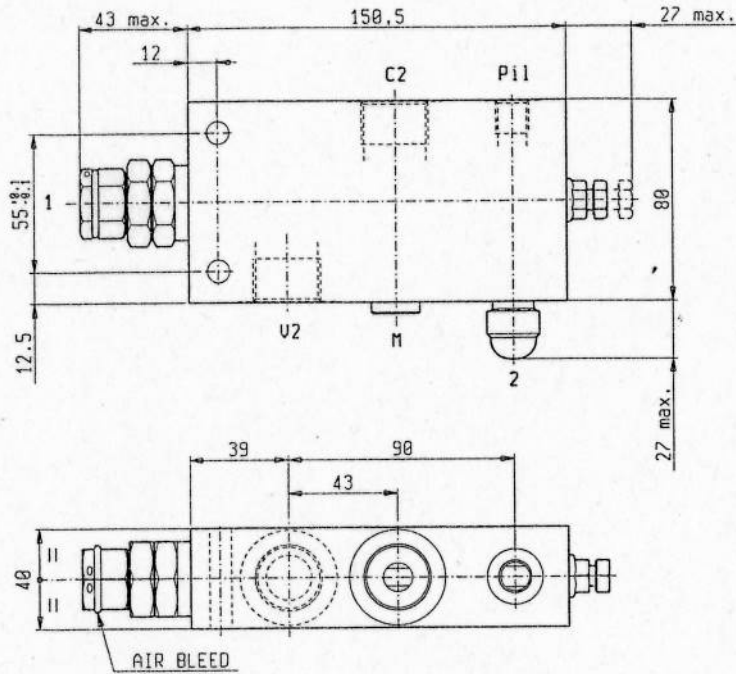


PILOT ASSISTED, "CCAP" TYPE, SERIES "33"
OVERCENTRE - FULLY PRESSURE COMPENSATED.



AVBSOSECCAP33PSE

08.35.56 - X - Y - Z



TECHNICAL DATA

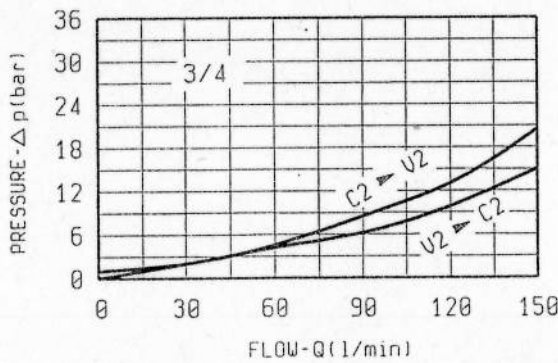
Max. pressure : 350 bar

Max. flow : see performance graph

Steel body

Pressure setting : at least 1.3 times the load induced pressure.

Valve 2 allows quick pressurization of pilot piston, without exceeding the opening threshold.



X PILOT RATIO

65 8:1

Z

SPRINGS

	Adj.press. range bar	Press.increase bar/turn	Std.setting bar (Q=5 l/min)	Ordering code	Pilot press. Shut-off (bar)	
35	1	100-350	84	350	03.51.01.287	—
	2	15-35	16.5	—	—	30

Y

PORT SIZE

	V2 - C2	Pil - M
04	G 3/4	G 1/4