

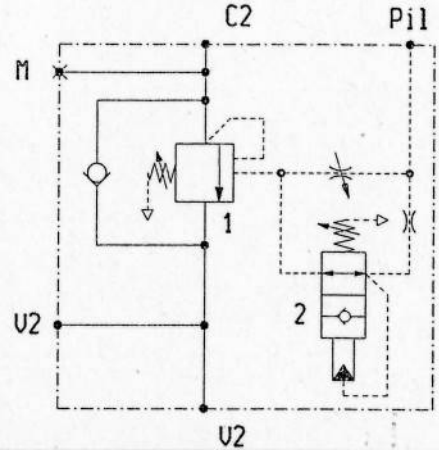
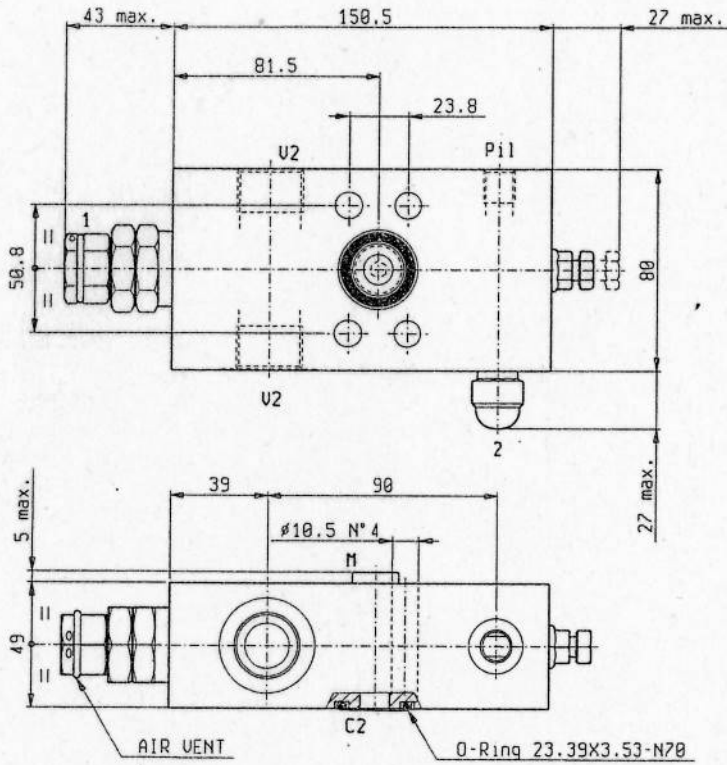


**PILOT ASSISTED, "CCAP" TYPE, SERIES "33"  
OVERCENTRE - FULLY PRESSURE COMPENSATED.**



**AVBSOSECAP33PSE34SAE**

**08.35.62 - X - Y - Z**



**TECHNICAL DATA**

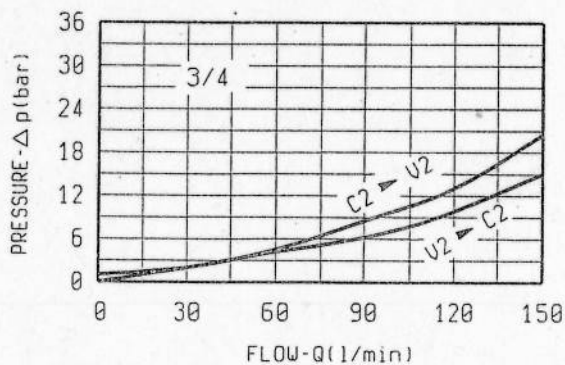
Max. pressure : 350 bar

Max. flow : see performance graph

Steel body

Pressure setting : at least 1.3 times the load induced pressure.

Valve 2 allows quick pressurization of pilot piston, without exceeding the opening threshold.



**X PILOT RATIO**

65 8:1

**Z**

**SPRINGS**

| 35 | Z | SPRINGS              |                         |                             |               |                             |
|----|---|----------------------|-------------------------|-----------------------------|---------------|-----------------------------|
|    |   | Adj.press. range bar | Press.increase bar/turn | Std.setting bar (Q=5 l/min) | Ordering code | Pilot press. Shut-off (bar) |
| 1  |   | 100-350              | 84                      | 350                         | 03.51.01.287  | -                           |
| 2  |   | 15-35                | 16.5                    | -                           | -             | 30                          |
|    |   |                      |                         |                             |               |                             |
|    |   |                      |                         |                             |               |                             |
|    |   |                      |                         |                             |               |                             |

**Y**

**PORT SIZE**

| 72 | PORT SIZE |              |         |
|----|-----------|--------------|---------|
|    | V2        | C2           | Pil - M |
|    | G 3/4     | 3/4 SAE 6000 | G 1/4   |
|    |           |              |         |
|    |           |              |         |
|    |           |              |         |