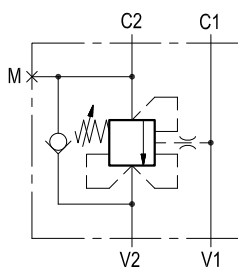


Single counterbalance, relief compensated

A-VBSO-SE-CC-78

08.39.27 - X - Y - Z

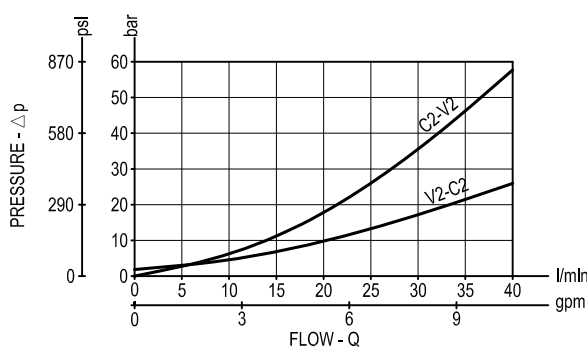


Description

When pressure at V2 rises above the spring bias pressure, the check seat is pushed away from the piston and flow is allowed from V2 to C2. When pressure at C2 rises above the setting, flow is relieved from C2 to V2. With pilot pressure at V1-C1, the pressure setting is reduced in proportion to the stated ratio of the valve, until opening and allowing flow from C2 to V2. The spring chamber is drained to V2. The valve applies a balanced piston design allowing relief operation at the valve setting independent of back-pressure at V2. However, the piloted opening of the valve remains subject to additive pressure at port V2.

Note: port identified with M are not protected with calibrated orifice but in direct connection with pressure channels.

Performance



Technical data

Hydraulic

Max. operating pressure	bar (psi)	350 (5000)
Max. flow	l/min (gpm)	40 (11)

Relief setting: at least 1.3 times the highest expected load.

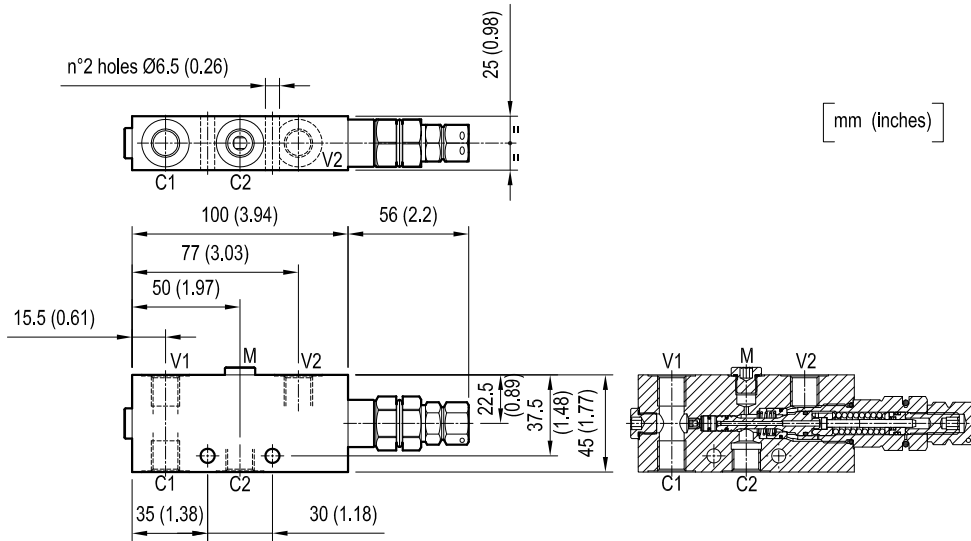
The pilot line includes adjustable hydraulic damping, for fine tuning of stability and response.

General

Manifold material		Steel
Weight		0.91 (2)
Fluid temperature range	°C (°F)	between -30 (-22) and +100 (212)
Other technical data		see data sheet RE 18350-50

Note: for applications outside these parameters, please consult us.

Dimensions



Ordering code

08.39.27 | **X** | **Y** | **Z**

Single counterbalance	
Pilot ratio	
= 03	4.1:1

SPRINGS			
	Adj. pressure range bar (psi)	Pres. increase bar/turn (psi/turn)	Std. setting Q=5 (l/min.) bar (psi)
= 35	200-350 (2900-5000)	210 (3000)	350 (5000)

Port sizes	V1-V2	C1-C2	M
= 09	G 1/4	G 1/4	G 1/8

Type	Material number
083927030935000	R930001966

Type	Material number