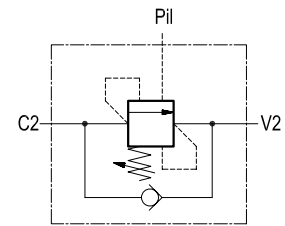
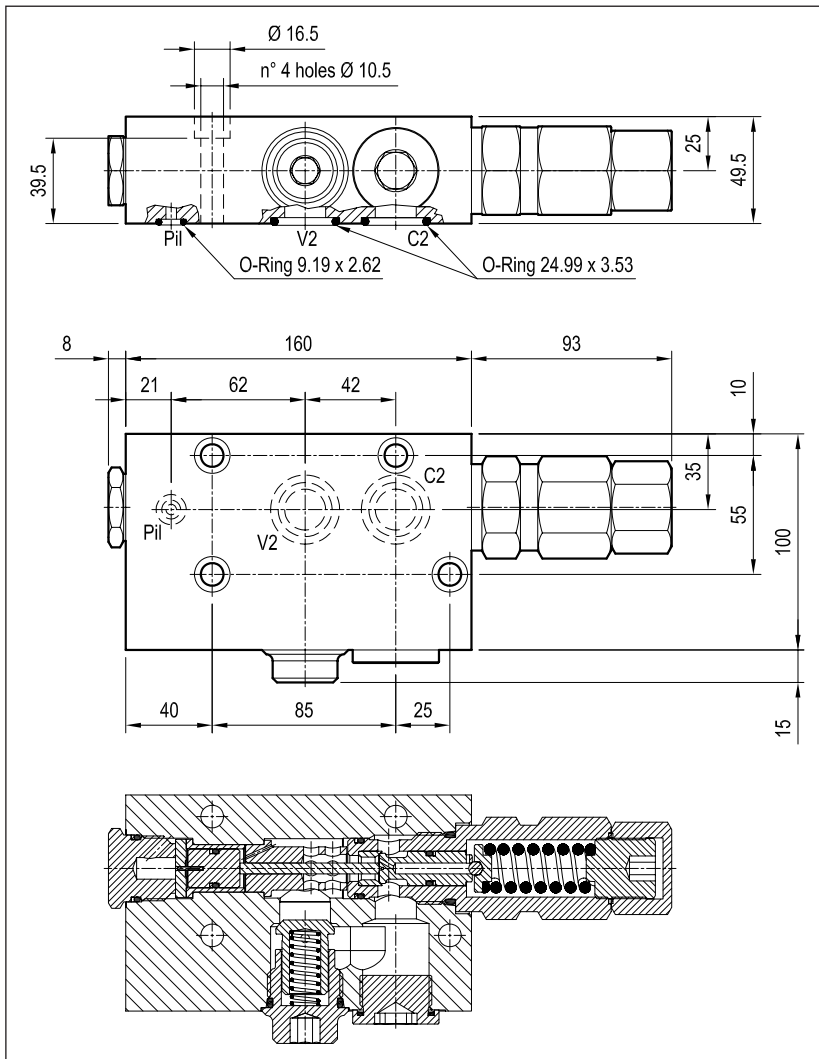


**PILOT ASSISTED,
SERIES "NA", COUNTERBALANCE,
FLANGEABLE.**

AVBSO-SE-FC-NA

08.41.65.25 - Y - Z



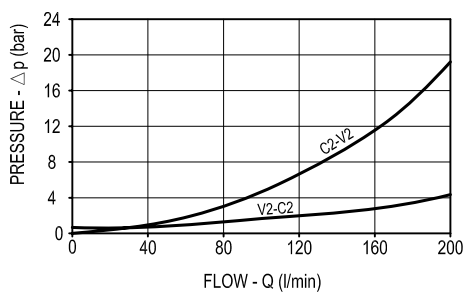
TECHNICAL DATA

Max. pressure: 350 bar

Max flow: 200 l/min

Zinc plated steel body

Pressure setting: at least 1.3 times the load induced pressure.



PILOT RATIO

5.4 : 1

SPRINGS

Z	SPRINGS				
	Adj. press. range bar	Pres. increase bar/turn	Std. setting bar Q=5 l/min	Ordering code	Colour
35	120-350	62	350	03.51.01.057	yellow

PORT SIZE

Y	PORT SIZE		
	V2-C2	P11	P111
05	Ø 19	Ø 5	G 1/4