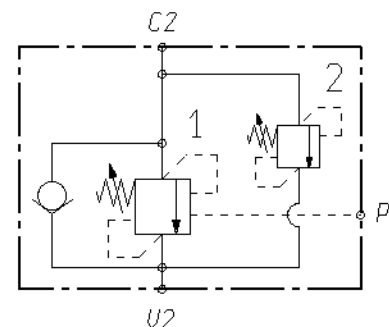
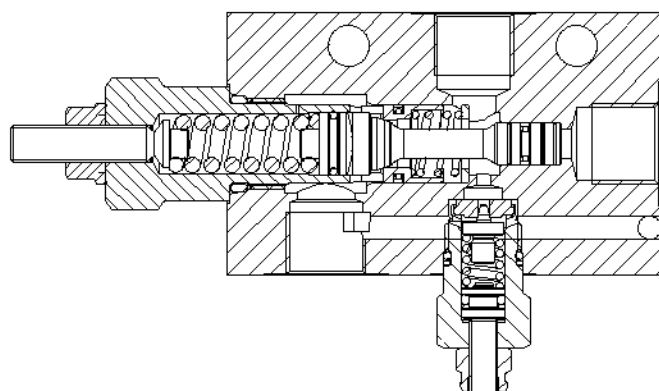
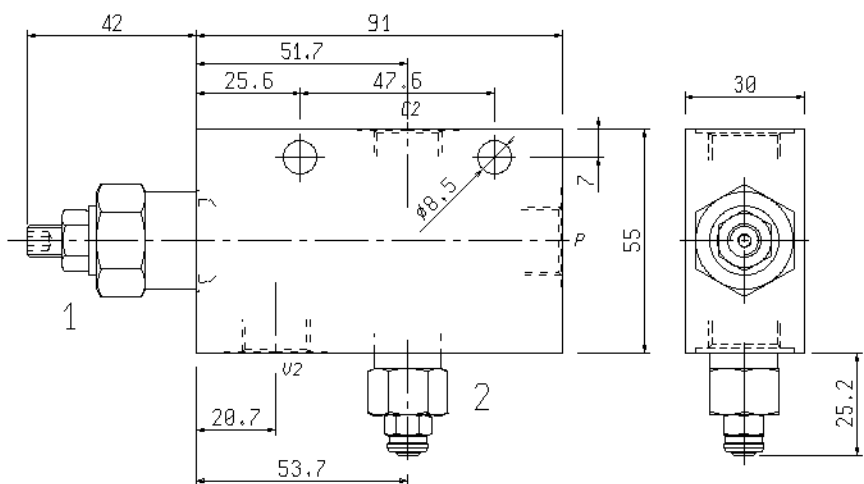




BILANCIAMENTO, SEMPLICE EFFETTO, SERIE "30"
 PILOT ASSISTED, SERIES "30", OVERCENTRE

A-VBS0-5E-30-V55-C2V2-38-35-F

08.43.93.03.02.35.00.F

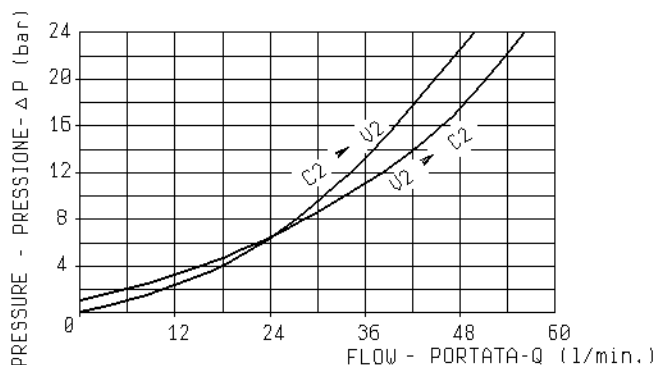


Pressione di lavoro max.
 Max. working pressure 350 bar

Portata max.
 Flow max. 40 l/min

Cappuccio di piombatura cod. 110423002
 Sealing cap cod. 110423002

Taratura della valvola: almeno 1,3 volte superiore alla pressione indotta dal carico
 Pressure setting: at least 1,3 times the load induced pressure



RAPPORTO DI PILOTAGGIO
 PILOT RATIO

4,2 : 1

MOLLE/SPRINGS

	Campo taratura min-max bar Adj.press. range bar	Incremento pressione bar/giro vite Pressure increase bar/turn	Taratura standard bar (Q=5 l/min) Std. setting bar (made at 5 l/min)	Codice ordinazione Ordering code	Colore Colour
1	100-350	138	350	03.51.01.171	giallo yellow
2	200-350	167	300 (I.A.) (cracking)		

ATTACCHI/PORT SIZE

U2-C2	P
G 3/8	G 3/8