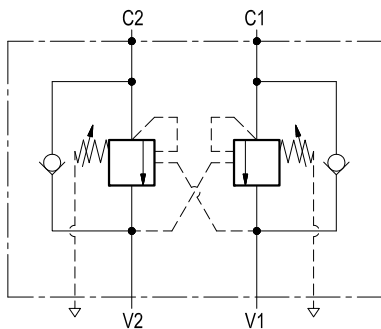
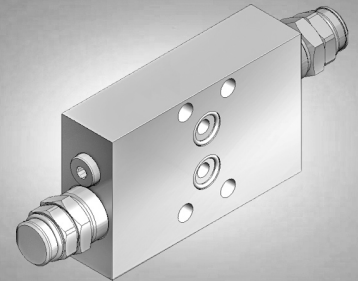


Dual counterbalance, vented

A-VBSO-DE-CCAP-78-FC2

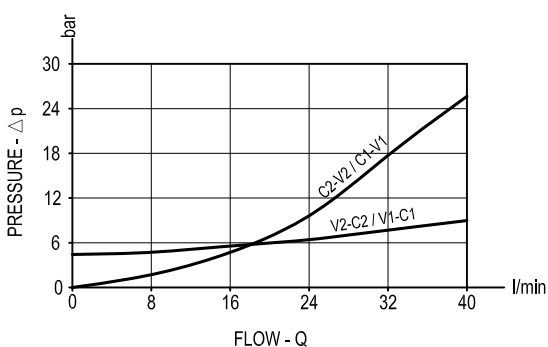
08.44.31 - X - Y - Z



Description

It provides static and dynamic control of load by regulating the flow IN and OUT of the actuator, through ports C1 and C2. This valve module includes 2 sections, each one composed by a check and a relief valve with balanced piston, pilot assisted by pressure in the opposite line: the check section allows free flow into the actuator, then holds the load against reverse movement; with pilot pressure applied at the line across, the pressure setting of the relief is reduced in proportion to the stated ratio until opening and allowing controlled reverse flow. Relief operates at the valve setting independent of back-pressure, but the piloted opening remains subject to additive pressure at V1 or V2. The relief spring chambers are vented to air: relief and piloted opening are independent of back-pressure at V1 or V2. For better safety and compact assembly, the C1 and C2 ports are gasket mounted directly on the actuator.

Performance



Technical data

Hydraulic

Max. operating pressure	bar (psi)	350 (5000)
Max. flow	l/min (gpm)	40 (11)

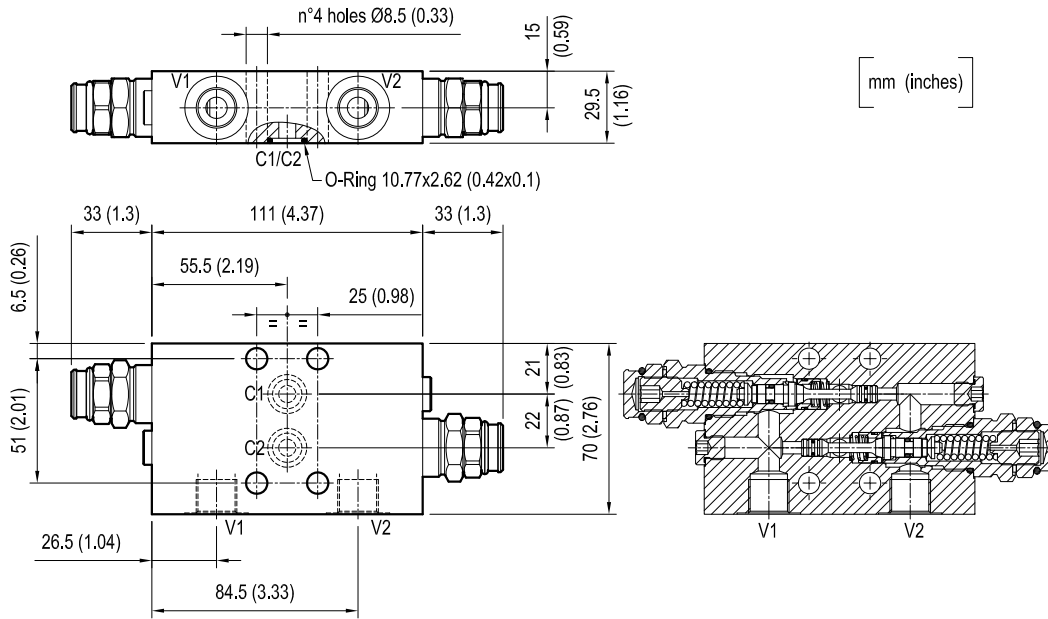
Relief setting: at least 1.3 times the highest expected load.

General

Manifold material		Steel
Weight	kg (lbs)	1.8 (4)
Fluid temperature range	°C (°F)	between -30 (-22) and +100 (212)
Other technical data		see data sheet RE 18350-50

Note: for applications outside these parameters, please consult us.

Dimensions



Ordering code

08.44.31 | **X** | **Y** | **Z**

Dual counterbalance, vented	
Pilot ratio	
= 03	4.1 : 1

Port sizes	V1-V2	C1-C2	
= 02	G 3/8	Ø 7	

SPRINGS			
	Adj. pressure range bar (psi)	Pres. increase bar/turn (psi/turn)	Std. setting Q=5 (l/min.) bar (psi)
= 35	100-350 (1450-5000)	140 (2000)	350 (5000)

Tamper resistant cap
code 11.04.36.001
R930005189

Type	Material number
084431030235000	R930001974

Type	Material number