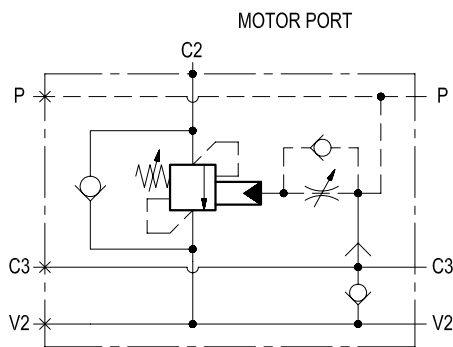
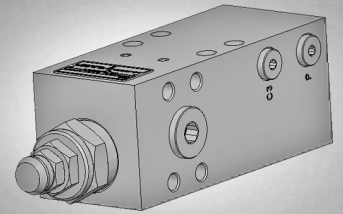


Single counterbalance with brake release port for winches, flangeable

A-VBSO-SE-FA-42

08.45.38 - X - Y - Z



Description

When pressure at V2 rises above the spring bias pressure, the check seat is pushed away from the piston and flow is allowed from V2 to C2. When load pressure at C2 rises above the pressure setting, the direct operated, differential area, relief function is activated and flow is relieved from C2 to V2. With pilot pressure at P, the pressure setting is reduced in proportion to the stated ratio of the valve, until opening and allowing flow from C2 to V2. The spring chamber is drained to V2, and any back-pressure at V2 is additive to the pressure setting in all functions. Through port C3, an incorporated shuttle valve directs either P or V2 line pressure to the spring actuated brake for brake opening.

Technical data

Hydraulic

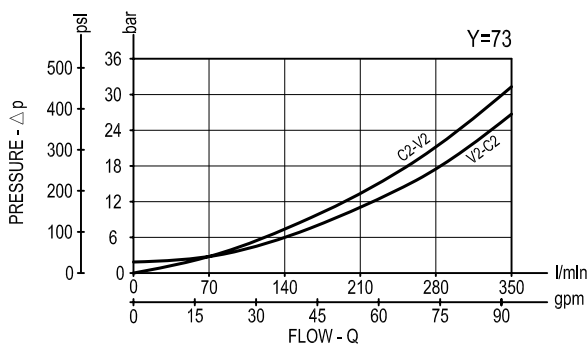
Max. operating pressure	bar (psi)	350 (5000)
Max. flow	l/min (gpm)	350 (93)

The high pilot ratio (13:1) has been developed for energy saving; for higher stability at all flows and pressures, the pilot line includes hydraulic damping.

The C2 port is designed with "SAE flange" pattern in order to be gasket mounted directly to the motor.

Relief setting: at least 1.3 times the highest expected load. In addition, both the relief setting and the pilot ratio must be determined also in order to achieve building-up of pilot pressure in P high enough to release the brake prior to any valve opening from C2 to V2.

Performance

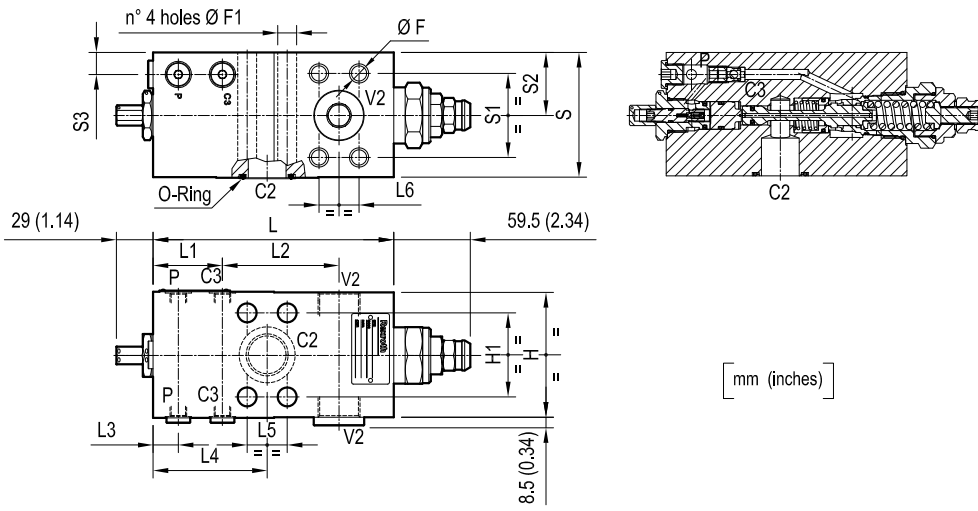


General

Manifold material	Steel
Weight	see "Dimensions"
Fluid temperature range	°C (°F) between -30 (-22) and +100 (212)
Other technical data	see data sheet RE 18350-50

Note: for applications outside these parameters, please consult us.

Dimensions



[mm (inches)]

17.5 (0.69)	48 (1.89)	66.7 (2.63)	98 (3.86)	31.8 (1.25)	31.8 (1.25)	90.5 (3.56)	20 (0.79)	92.5 (3.64)	55 (2.17)	191 (7.52)	66.7 (2.63)	98 (3.86)	15 (0.59)	M14	36.09x3.53 (1.42x0.14)	64	13.3 (29.3)
16 (0.63)	40 (1.58)	57.2 (2.25)	79 (3.11)	27.8 (1.1)	27.8 (1.1)	91 (3.58)	20 (0.79)	85 (3.35)	59 (2.32)	191 (7.52)	57.2 (2.25)	79 (3.11)	12.5 (0.49)	M12	32.92x3.53 (1.3x0.14)	73	8.7 (19.2)
16 (0.63)	39.5 (1.56)	50.8 (2)	79 (3.11)	23.8 (0.94)	23.8 (0.94)	91 (3.58)	20 (0.79)	85 (3.35)	59 (2.32)	191 (7.52)	50.8 (2)	79 (3.11)	10.5 (0.41)	M10	23.39x3.53 (0.92x0.14)	72	8.8 (19.4)
S3	S2	S1	S	L6	L5	L4	L3	L2	L1	L	H1	H	F1	F	O-Ring	Y	Weight kg (lbs)

Ordering code

08.45.38 X Y Z

Single counterbalance with brake release port for winches, flangeable

Pilot ratio

= 13 13:1

Port sizes	V2-C2	C3-P
= 72	3/4 SAE6000	G 1/4
= 73	1 SAE6000	G 1/4
= 64	1-1/4 SAE6000	G 1/4

SPRINGS

	Adj. pressure range bar (psi)	Pres. increase bar/turn (psi/turn)	Std. setting Q=5 (l/min.) bar (psi)
= 35	250-500 (3625-7250)	102 (1479)	500 (7250)

Type	Material number
08453813723500E	R930050895
08453813733500G	R930050897
08453813643500E	R930051159

Type	Material number