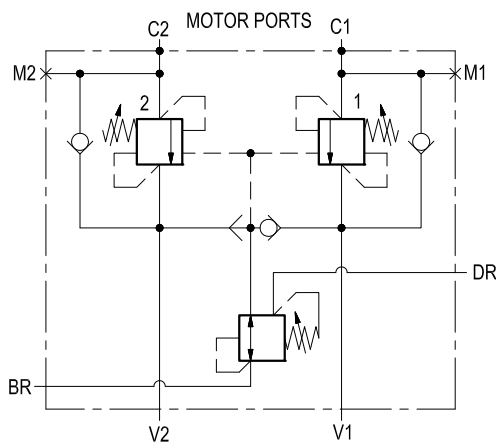


Dual counterbalance with pressure reducer for brake release port

A-VBSN-DE-VF-20A-FM

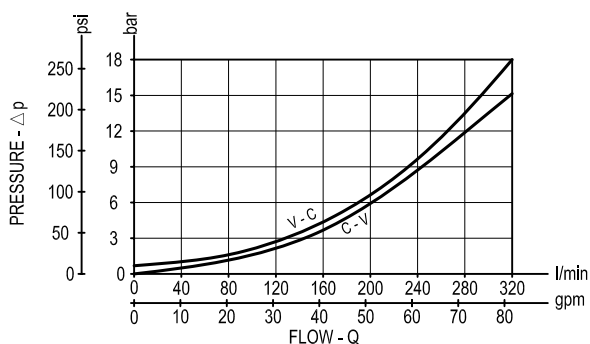
08.46.32 - X - Y - Z



Description

It provides static and dynamic motion control by regulating flow and pressure IN and OUT of the hydraulic motor at ports C1 and C2. It includes 2 motion control sections (ref. 1 - 2), each one composed by a check and a relief valve pilot assisted by pressure in the opposite line: the check allows free flow into the motor, then locks and prevents reverse movement. With pilot pressure applied at the line across, the pressure setting of the relief is reduced in proportion to the stated ratio until opening and allowing controlled reverse motion. With motor turning and without pilot pressure, the relief function builds up back-pressure at the motor port in order to stop the motion. Back-pressure at V1 or V2 is additive to the pressure settings in all functions. A shuttle valve directs either V1 or V2 line pressure to reducer cartridge (3) and provides "low/constant" pressure for brake releasing through port BR.

Performance



Technical data

Hydraulic

Max. operating pressure bar (psi) 350 (5000)

Max. flow l/min (gpm) 320 (85)

Flangeable on REXROTH motors A2FE80-90 series.

Relief setting of valves 1 and 2: at least 1.3 times the highest expected load.

General

Manifold material Steel

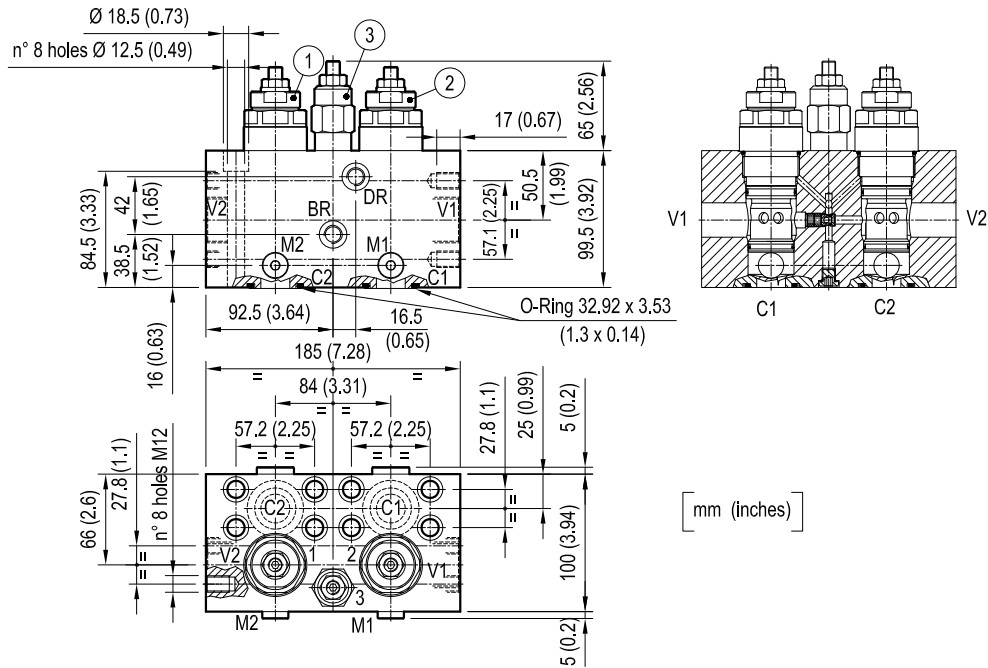
Weight kg (lbs) 13.2 (29.1)

Fluid temperature range °C (°F) between -30 (-22) and +100 (212)

Other technical data see data sheet RE 18350-50

Note: for applications outside these parameters, please consult us.

Dimensions



[mm (inches)]

Ordering code

08.46.32	X	Y	Z
-----------------	----------	----------	----------

Dual counterbalance,
with brake release port

Pilot ratio

= 03 4:1

		SPRINGS		
		Adj. pressure range bar (psi)	Pres. increase bar/turn (psi/turn)	Std. setting Q=5 (l/min.) bar (psi)
= 35	Valve 1	140-350 (2000-5000)	108 (1566)	350 (5000)
	Valve 2	140-350 (2000-5000)	108 (1566)	350 (5000)
	Valve 3	10-50 (145-725)	7 (102)	35/40 (500/580)

Port sizes	V1 - V2	C1 - C2	DR-BR M1-M2
= 73	1" SAE 6000	1" SAE 6000	G 1/4

Type	Material number
084632037335000	R930003631

Type	Material number