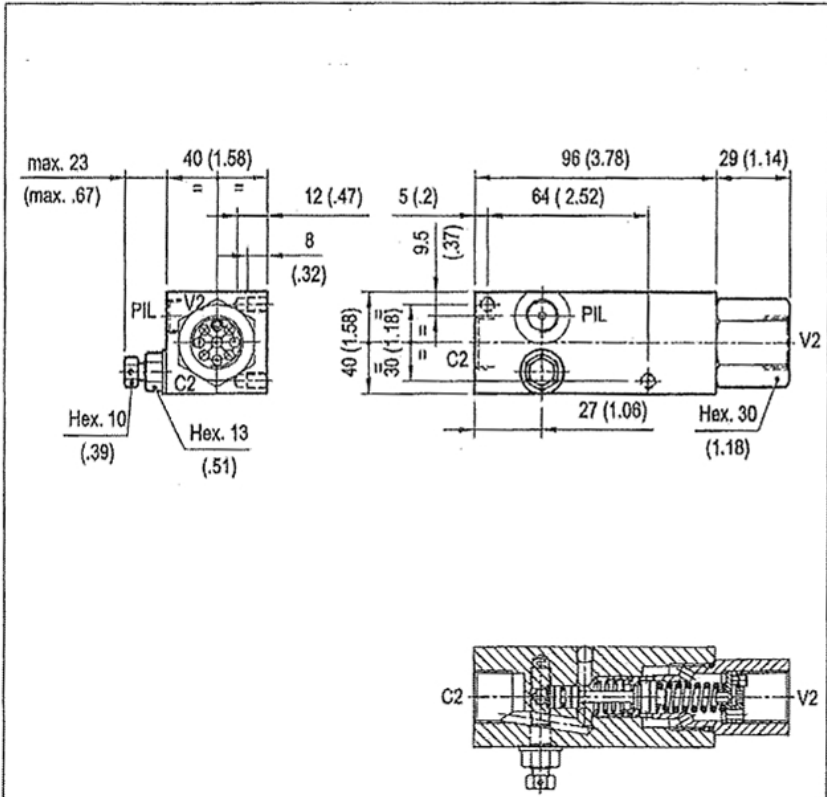


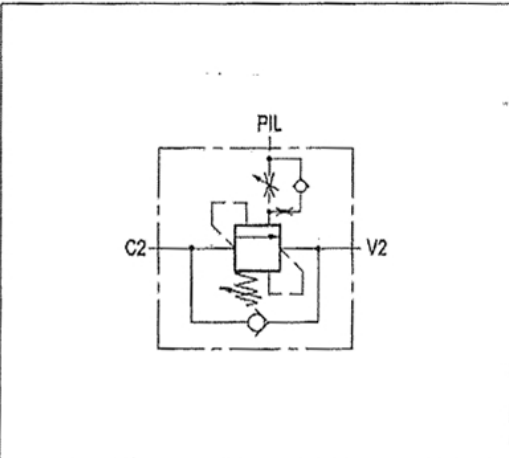
**A-VBSO-SE-30-SAF**

**08.47.72 - X - Y - Z**



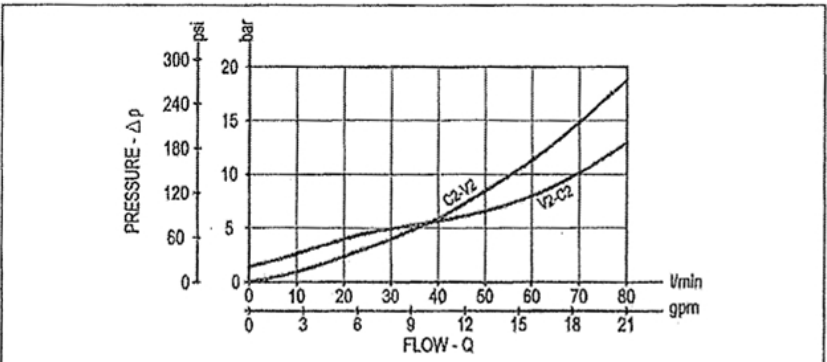
[ mm (inches) ]

When pressure at V2 rises above the spring bias pressure, the check seat is pushed away from the piston and flow is allowed from V2 to C2. When load pressure at C2 rises above the pressure setting, the direct operated, differential area, relief function is activated and flow is relieved from C2 to V2. With pilot pressure at Pil, the pressure setting is reduced in proportion to the stated ratio of the valve, until opening and allowing flow from C2 to V2. The spring chamber is drained to V2, and any back-pressure at V2 is additive to the pressure setting in all functions.



**TECHNICAL DATA**

Max. operating pressure: 350 bar (5000 psi)
Max flow: 80 l/min (21 gpm)
Steel body
Weight: 1.2 kg (2.7)
Relief setting: at least 1.3 times the highest expected load.
The pilot line includes adjustable hydraulic damping, for fine tuning of stability and response.



<b>X</b>	<b>PILOT RATIO</b>	
<b>03</b>	4.2 : 1	

<b>Z</b>	<b>SPRINGS</b>				
	Adj. press. range bar (psi)	Pres. increase bar/turn (psi/turn)	Std. setting bar (psi) Q=5 l/min	Ordering code	Colour
<b>20</b>	130-320 (1900-4650)	94 (1363)	280 (4000)	03.51.01.102	green

<b>Y</b>	<b>PORT SIZE</b>	
	V1-V2	PIL
<b>03</b>	G 1/2	G 1/4