

PILOT OPERATED UNLOADING VALVES



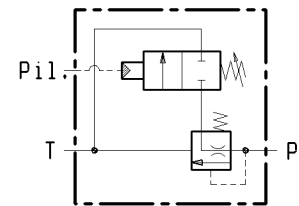
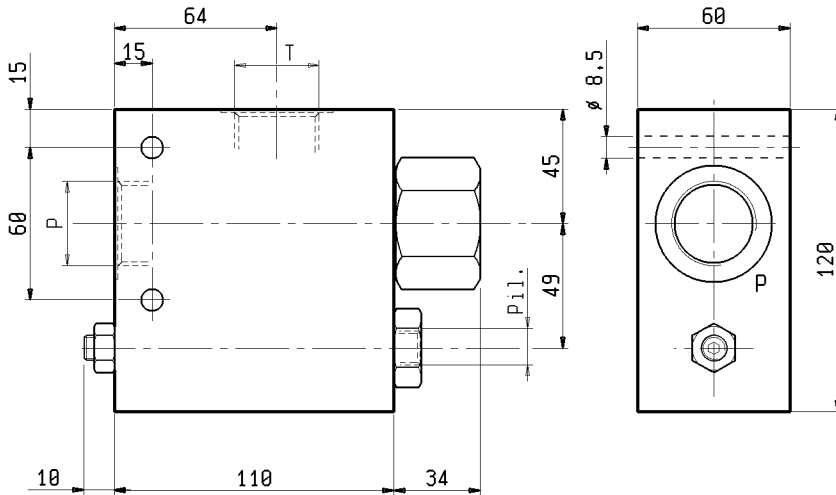
A-BM-N-100-10-01

08.93.04.03.05.10.01.0

DENOMINAZIONE VALVOLA
VALVE DENOMINATION

CODICE D'ORDINAZIONE
ORDERING CODE

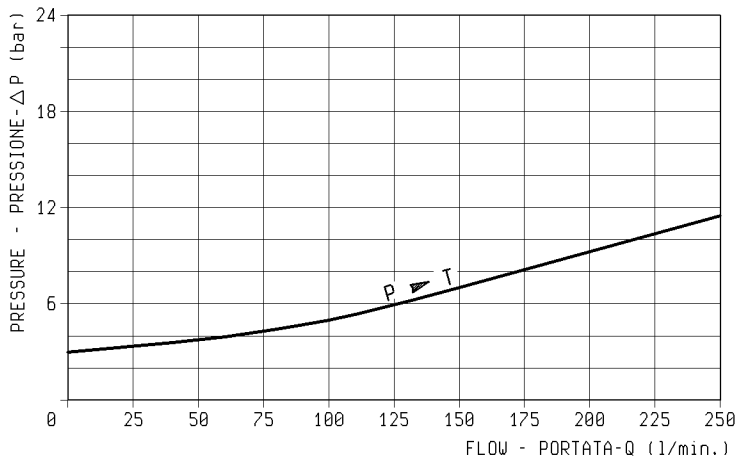
These valves unload to tank the pump flow when the pre-set pilot pressure is reached. Fluid cleanliness class: 18/14 ISO 4406 (9 NAS-1638) or better. Zinc plated steel body.



Pressione di lavoro max
300 bar
Max working pressure
300 bar

Portata max
250 l/min.
Flow max
250 l/min.

Peso Kg.
Weight Kg.



REGOLAZIONI ADJUSTMENTS	
vite esterna esagono incassato leakproof hex. socket screw	

MOLLE - SPRINGS				
Campo taratura min-max bar Adj.press. range bar	Incremento pressione bar/giro vite Pressure increase bar/turn	Taratura bar I.A. Setting bar I.A.	Codice ordinazione Ordering code	Colore Colour
20-100	23,5	60	03.51.01.076	blu blue

ATTACCHI / PORT SIZE	
P - T	Pil.
G 1	G 1/4