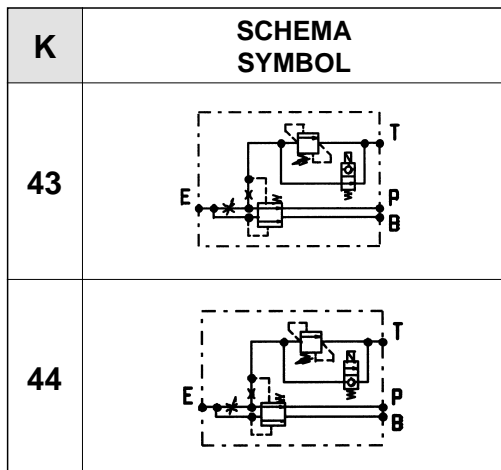
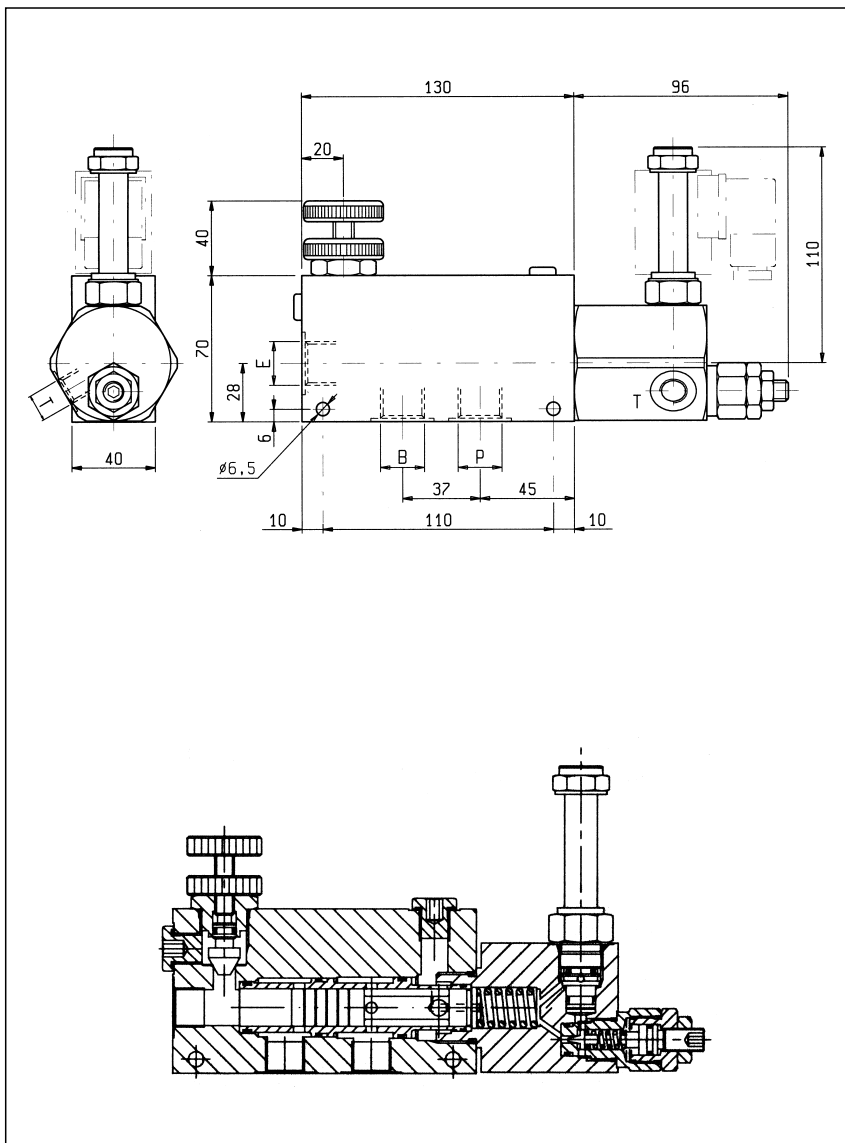
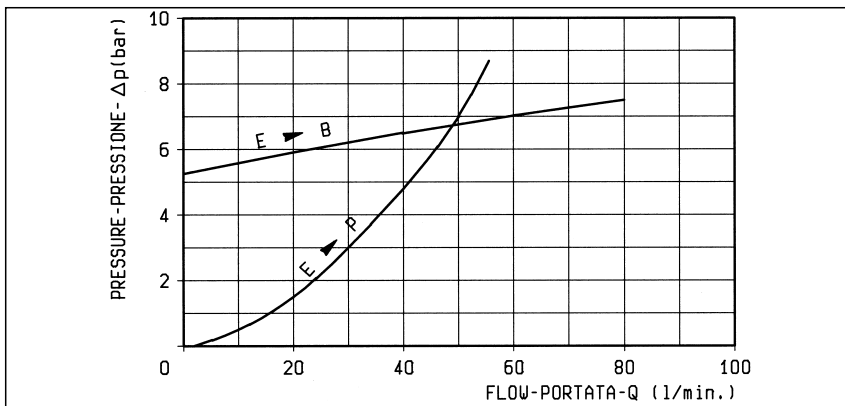


VRFC3C-VEIA2-VS

OM.K.03 - X - Y



DATI TECNICI / TECHNICAL DATA	
Pressione di lavoro max. Max. working pressure	210 bar
QE = Portata max. in entrata "E" QE = Max. admitted inlet flow "E" port	90 l/min
QP = Portata max. in uscita prioritaria "P" QP = Max. delivery in priority flow "P" port	55 l/min
Peso Weight	1.3 kg
Classe di pulizia dell'olio: almeno 18/14 ISO 4406 (9 NAS-1638). Fluid cleanliness class: 18/14 ISO 4406 (9 NAS-1638) or better.	
ATTENZIONE: per applicazioni in cui la linea prioritaria "P" non debba mai rimanere pressurizzata se non utilizzata, consultare OIL CONTROL. WARNING: For applications where the priority line "P" must never remain pressurized when not being used, consult OIL CONTROL Service.	



X	REGOLAZIONI ADJUSTMENTS
70	volantino e controvolantino handknob and locknut
80	vite screw and locknut
40	manopola graduata graduated handknob

Y	ATTACCHI / PORT SIZE	
	E-B-P	T
02	G 3/8	G 1/4
03	G 1/2	G 1/4