

# Insert type Relief, direct acting adjustable, anti-cavitation function

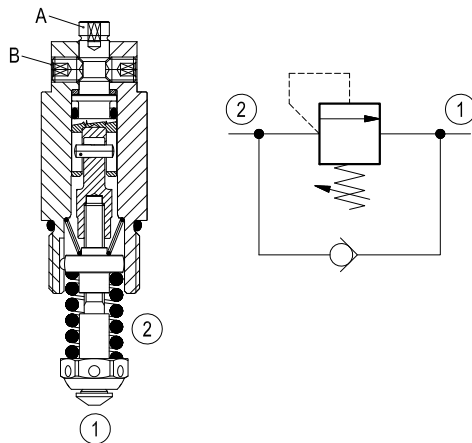
Special cavity, 730

VRA1.050

OT.M6.02 - X - 99 - Z



## Dimensions



## Description

Flow is free from 1 to 2 until pressure increases to meet the selected valve setting, allowing relief flow through port 1 to tank. This valve combine the typical function of shock relief valve (direct acting) and anticavitation function through the check valve. The direct action and the specific design allow a very fast opening and closing.

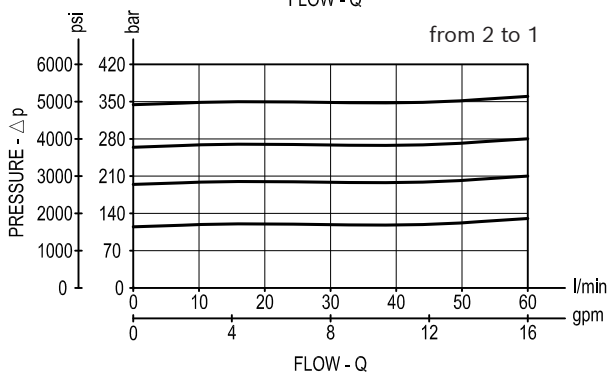
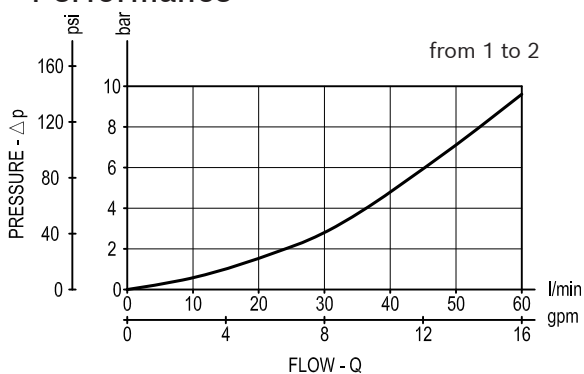
**Note:** to obtain a good leak proof performance coin the cavity seat using a loose valve seat (P/N 0F.S0.108) as a coining tool.

Please consult factory for any question.

Please be careful to the following instructions:

- 1) Screw the valve into the cavity using the mentioned installation torque;
- 2) Adjust the setting using the stem "A";
- 3) Once the valve is adjusted to the required pressure setting, lock the screw "B". Be careful to make the pressure setting adjustment when the screw "B" is loose; block the screw with torque 2-4 Nm (1.5-3 ft-lbs) only when the pressure setting is adjusted.

## Performance



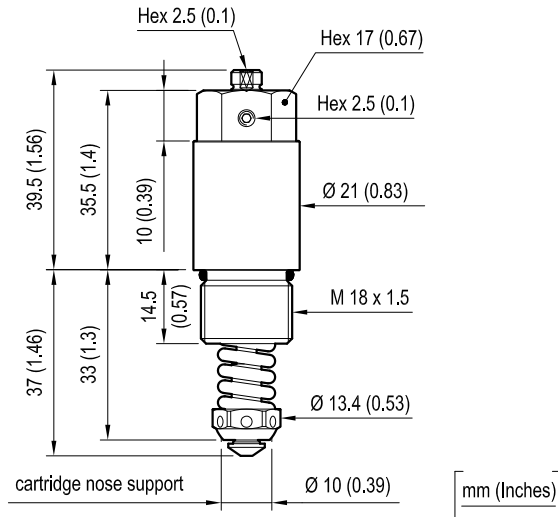
## Technical data

Max. operating pressure	bar (psi)	380 (5500)
Max. flow	l/min. (gpm)	60 (16)
Max. internal leakage (*)	drops/min.	15
Fluid temperature range	°C (°F)	-30 to 100 (-22 to 212)
Installation torque	Nm (ft-lbs)	45-50 (33-37)
Weight	kg (lbs)	0.08 (0.18)
Special cavity		730 see data sheet RE 18325-75
Lines bodies and standard assemblies		Please refer to section "Hydraulic integrated circuit" or consult factory
MTTFD		150 years see data sheet 18350-51
Seal kit (**)	code material no.	RG0730020000100 R931002406
Fluids		Mineral-based or synthetics with lubricating properties at viscosities of 10 to 500 mm <sup>2</sup> /s (cSt)
Recommended degree of fluid contamination		Nominal value max. 10µm (NAS 8) ISO 4406 20/18/15
Installation		No restrictions
Other Technical Data		See data sheet RE 18350-50

(\*) at 80% of pressure setting

(\*\*) Only external seals for 10 valves

### Dimensions



### Ordering code

OT.M6.02	X	99	Z	*
----------	---	----	---	---

Insert type - Relief, direct acting adjustable, anti-cavitation function

Series O/A to L unchanged performances and dimensions

Adjustments

= 03 Adjustable

Special cavity, 730

SPRINGS		
	Adj. pressure range bar (psi)	Pressure increase bar/turn (psi/turn)
= 05	20-70 (290-1000)	20 (290)
= 10	70-120 (1000-1750)	28 (406)
= 20	120-200 (1750-2900)	49 (711)
= 27	200-270 (2900-3900)	62 (899)
= 32	270-320 (3900-4700)	74 (1073)
= 35	320-380 (4700-5500)	97 (1407)

Type	Material number
OTM602039905000	R931002277
OTM602039910000	R931002278
OTM602039920000	R931002279
OTM602039927000	R931002280
OTM602039932000	R931002281
OTM602039935000	R931002282

Type	Material number