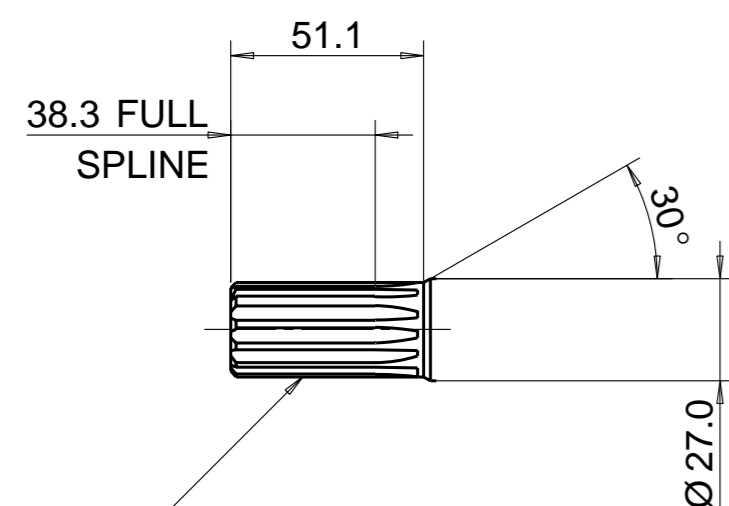
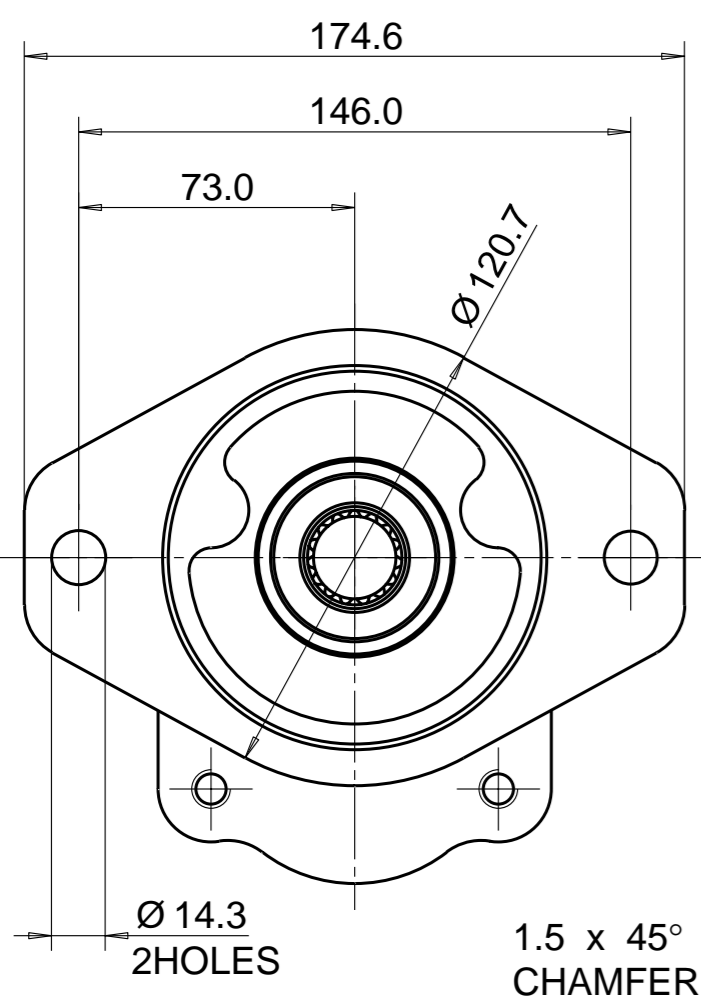


PUMP DATA	PUMP I + II	PUMP III
DISPLACEMENT	28,0 ccm	16,0 ccm
MAX. PRESSURE	250 bar	250 bar
SPEED RATE	500 TO 3100 min ⁻¹	
MAX. INPUT SHAFT TORQUE	530 Nm	
ROTATION	ANTI CLOCKWISE	

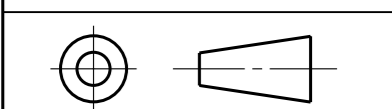


SAE INVOLUTE SPLINE
15 TEETH - 16/32 PITCH
FLAT ROOT SIDE FIT
MAJOR DIA: 24.84-24.97
MINOR DIA 21.793 MAX.



30NOV09 JS 09-11-954
13NOV09 WS 09-11-932

THIRD ANGLE PROJECTION



EXP NO.

FIRST USED

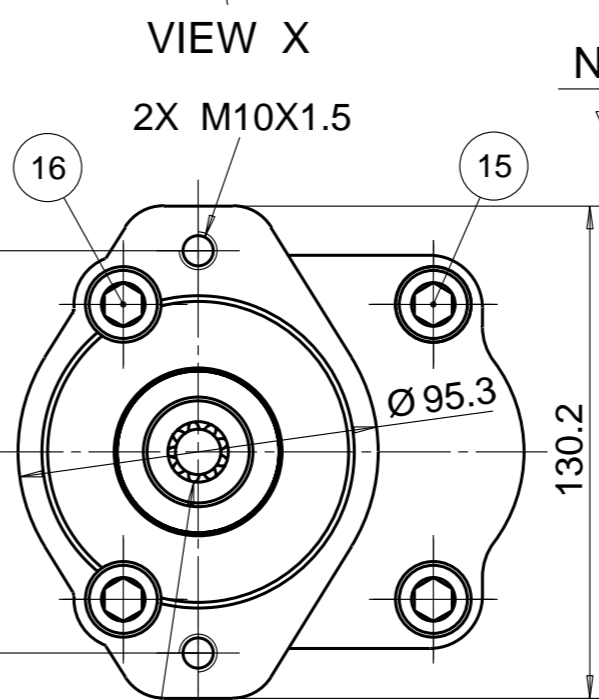
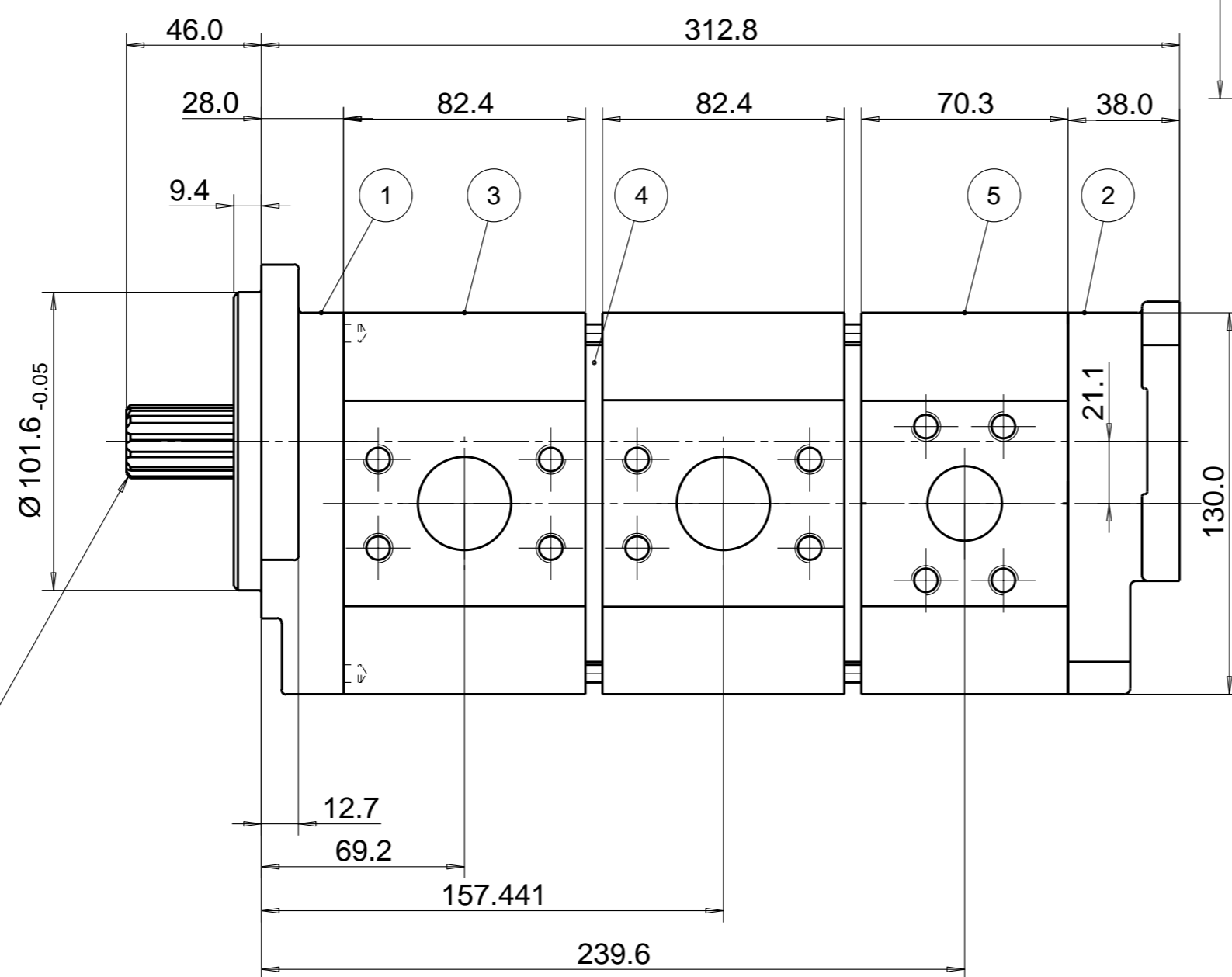
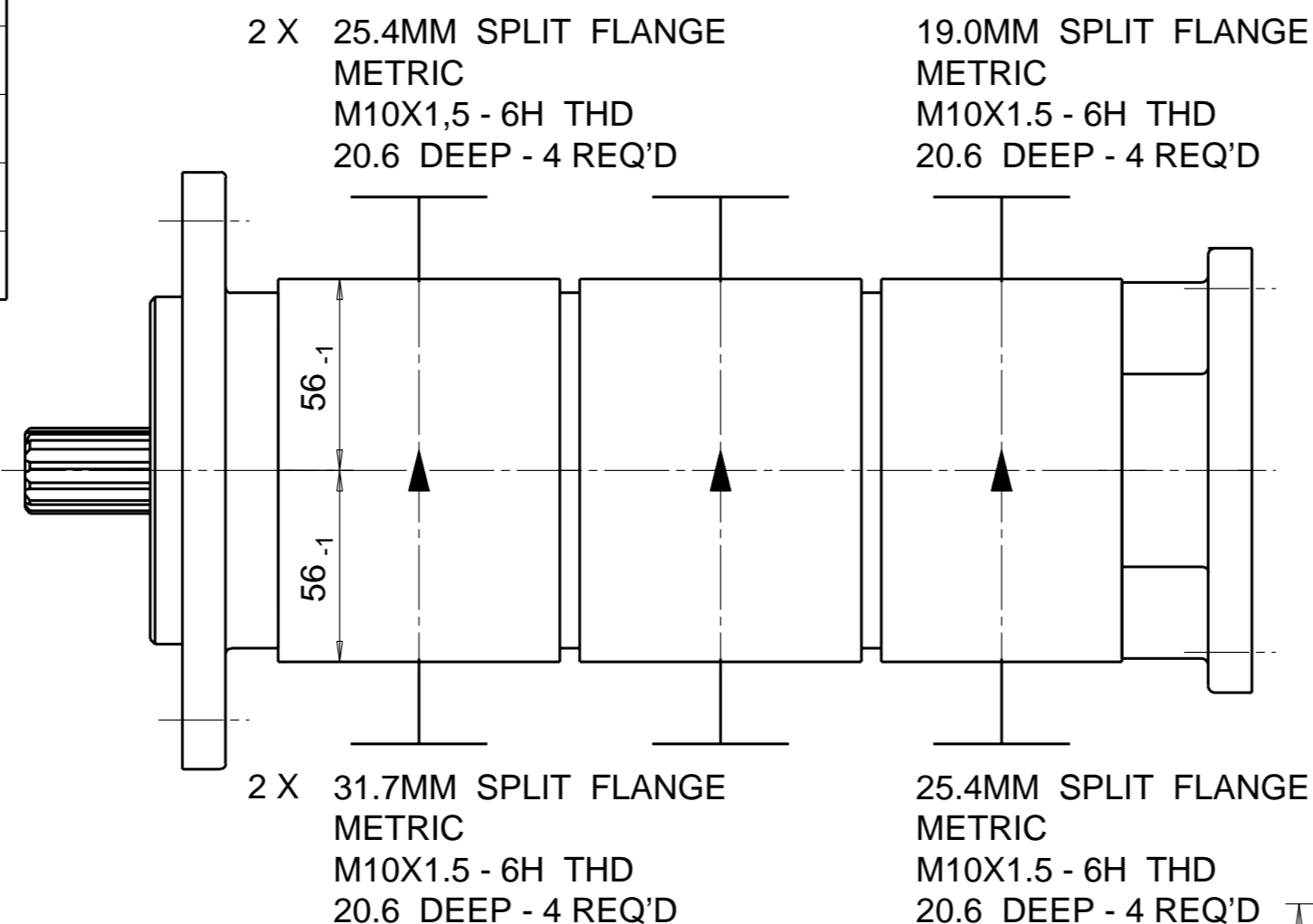
05 - 05 - 964

333 9130 015

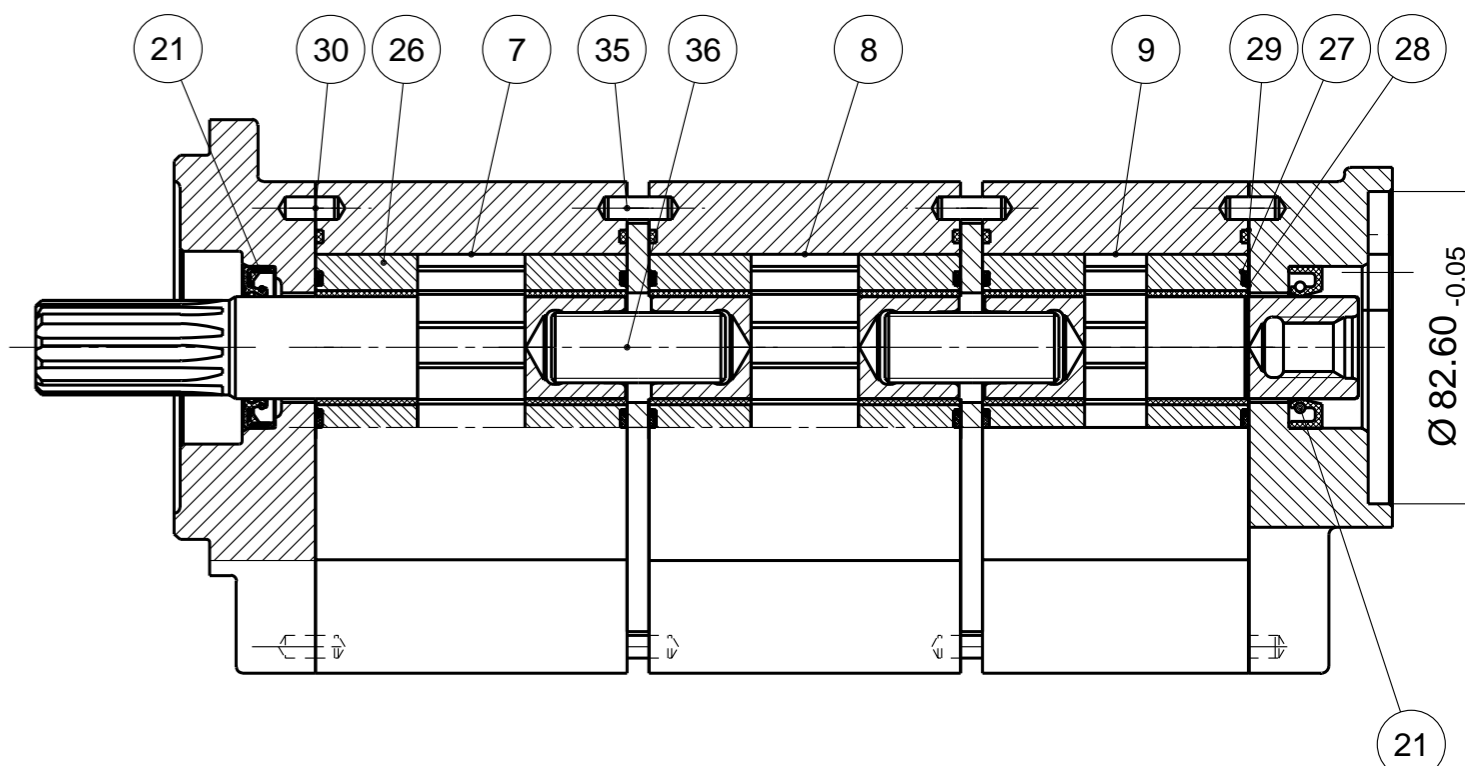
c

INACTIVE DWG.
DO NOT USE
SUPERSEDED BY: 333 9130 016

SYM. REVISIONS 27JAN10 WS 10-01-949



INTERNAL SPLINE FOR
SAE INVOLUTE SPLINE
9 TEETH - 16/32 PITCH
FLAT ROOT SIDE FIT
MAJOR DIA 15.47
MINOR DIA. 12.28
MAX. TORQUE 110 Nm



NOTE

FOR ASSEMBLY INSTRUCTIONS SEE DWG. NO. "517-B1"
"PGP517 PUMP ASSEMBLY INSTRUCTIONS".

28	391 2882 162	6	SEAL. BK-UP	36	324 1133 001	2	SFT, CONN.
27	391 2882 161	6	SEAL. CHAN.	35	391 2080 081	4	PIN, DOWEL
26	391 2185 093	6	THRBLK/BSHG	34			
25				33			
24				32	391 1432 004	2	SCREW. DR.
23				31	391 2183 227	1	NAMEPLATE
22				30	391 2080 080	4	PIN. DOWEL
21	391 2883 058	2	SEAL. LIP	29	391 2882 514	6	SEAL. SECT.
ITEM	PART NO	REQD		ITEM	PART NO	REQD	

20							
19							
18							
17							
16	391 1402 269	2	CAPSCREW (290 MM)				
15	391 1402 268	2	CAPSCREW (280 MM)				
14							
13							
12							
11							
10							
9	73330:4118619	1	SET, GEAR				
8	333 2828 010	1	SET, GEAR				
7	333 2928 480	1	SET, GEAR SHAFT				
6							
5	333 8816 919	1	HOUSING, GEAR				
4	391 2183 237	2	PLATE, MID				
3	333 8828 528	2	HOUSING. GEAR				
2	73330:4081998	1	HOUSING. PEC				
1	333 5020 203	1	HOUSING. SEC				
ITEM	PART NO	REQ'D					DESCRIPTION

THIS DOCUMENT CONTAINS INFORMATION THAT IS CONFIDENTIAL AND PROPRIETARY TO PARKER-HANNIFIN CORPORATION ("PARKER"). THIS DOCUMENT IS FURNISHED ON THE UNDERSTANDING THAT THE DOCUMENT AND THE INFORMATION IT CONTAINS WILL NOT BE COPIED OR DISCLOSED TO OTHERS OR USED FOR ANY PURPOSE OTHER THAN CONDUCTING BUSINESS WITH PARKER, AND WILL BE RETURNED AND ALL FURTHER USE DISCONTINUED UPON REQUEST BY PARKER. ALL RIGHTS RESERVED.

PGP517B0280AE1H3NP4P3S-517B0280XP4P3S-517A0160XT3T2A1*H2*

MATERIAL	ADM CTR P	
H.E.-STD:	REV DTE 27JAN10	
	WT 24 kg	DIMENSIONS ARE MM

Parker Pump & Motor Division
Chemnitz

DR.BY DATE CH.BY DATE SCALE
WS 30MAY05 RZ 30MAY05 1/2

333 9130 015

© 2010 Parker Hannifin Corporation