

Technical Information

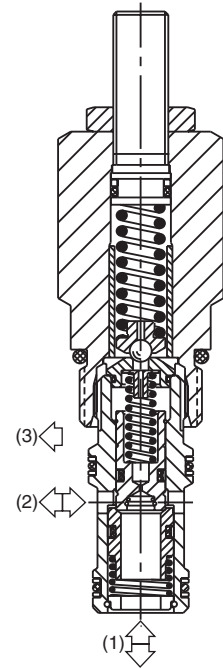
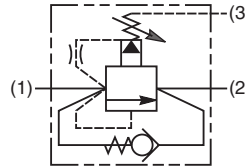
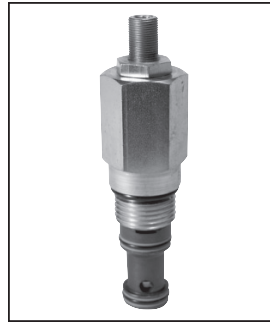
- CV** Check Valves
- SH** Shuttle Valves
- LM** Load/Motor Controls
- FC** Flow Controls
- PC** Pressure Controls
- LE** Logic Elements
- DC** Directional Controls
- MV** Manual Valves
- SV** Solenoid Valves
- PV** Proportional Valves
- CE** Coils & Electronics
- BC** Bodies & Cavities
- TD** Technical Data

General Description

Pilot Operated Sequence Valve with Reverse Flow Check. For additional information see Technical Tips on pages PC1-PC6.

Features

- High flow capacity
- For use on clamp and drill circuits where pressure is to be maintained regardless of drop in system pressure
- Integral 250 micron pilot flow filter
- Hardened working parts for maximum durability
- Adjustable and tamperproof versions available
- All external parts zinc plated



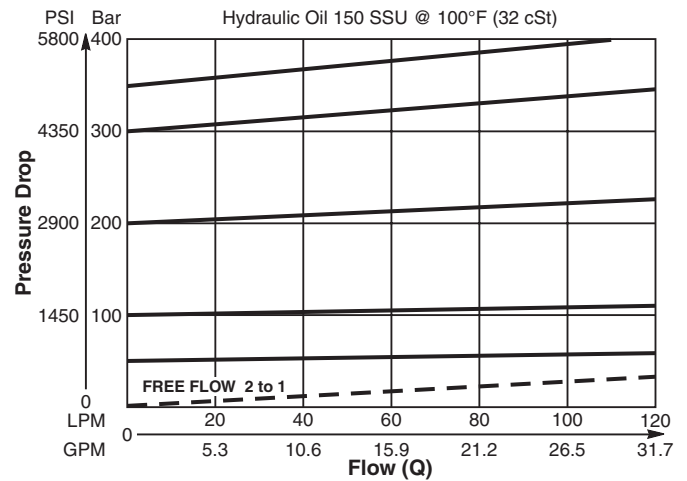
Specifications

| | |
|--------------------------------------|--|
| Rated Flow | 70 LPM (18.5 GPM) |
| Maximum Inlet Pressure | 420 Bar (6000 PSI) |
| Maximum Pressure Setting | H - 10-210 Bar (145-3000 PSI) P - 10-420 Bar (145-6000 PSI) |
| Maximum Tank Pressure | 420 Bar (6000 PSI) |
| Leakage at 150 SSU (32 cSt) | 50 drops/min. @ 100 Bar (1450 PSI) |
| Cartridge Material | All parts steel. All operating parts hardened steel. |
| Operating Temp. Range/Seals | -40°C to +93.3°C (Nitrile) (-40°F to +200°F) -31.7°C to +121.1°C (Fluorocarbon) (-25°F to +250°F) |
| Fluid Compatibility/Viscosity | Mineral-based or synthetic with lubricating properties at viscosities of 45 to 2000 SSU (6 to 420 cSt) |
| Filtration | ISO Code 16/13, SAE Class 4 or better |
| Approx. Weight | 0.25 kg (0.55 lbs.) |
| Cavity | C10-3S (See BC Section for more details) |
| Form Tool | Rougher NFT10S-3R Finisher NFT10S-3F |

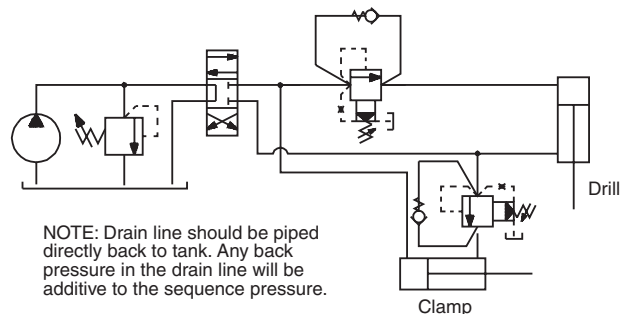
Performance Curve

(Pressure rise through cartridge only)

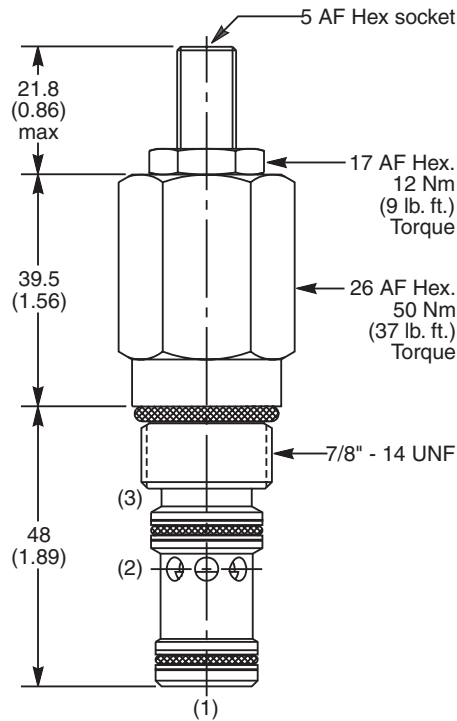
Flow vs. Inlet Pressure 1 to 2



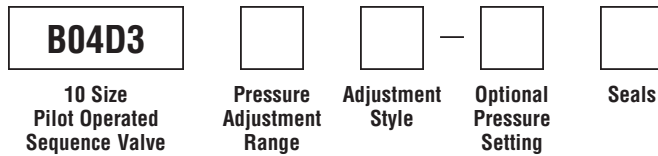
Application



Dimensions Millimeters (Inches)



Ordering Information



| Code | Pressure Adjustment Range |
|------|-------------------------------|
| H | 10 - 210 Bar (145 - 3000 PSI) |
| P | 10 - 420 Bar (145 - 6000 PSI) |

| Optional Pressure Setting | |
|---|--|
| Specify setting if required (Bar) | |
| B04D3H Standard Setting: 100 Bar (1450 PSI) @ 15 LPM (4.0 GPM) | |
| B04D3P Standard Setting: 200 Bar (2900 PSI) @ 15 LPM (4.0 GPM) | |

| Code | Adjustment Style / Kit No. |
|------|-------------------------------|
| Z | Screw Adjust (Std.) |
| W | Knob Adjust |
| T | Tamper Resistant Cap (TC1130) |

| Code | Seals / Kit No. |
|------|---------------------------------------|
| N | Nitrile, Buna-N (Std.) / (SK30504N-1) |
| V | Fluorocarbon / (SK30504V-1) |

Order Bodies Separately



| Code | Porting |
|------|-----------------------------------|
| 710 | 5/8" SAE (main) 3/8" SAE (aux) |
| 711 | 3/4" BSP (main) 1/4" BSP (aux) |

| Code | Body Material |
|------|---------------|
| A | Aluminum |
| S | Steel |

- CV**
Check Valves
- SH**
Shuttle Valves
- LM**
Load/Motor Controls
- FC**
Flow Controls
- PC**
Pressure Controls
- LE**
Logic Elements
- DC**
Directional Controls
- MV**
Manual Valves
- SV**
Solenoid Valves
- PV**
Proportional Valves
- CE**
Coils & Electronics
- BC**
Bodies & Cavities
- TD**
Technical Data