

General Description

The DL081 Series Manual Valves are suited for emergency lowering applications and on-off flow applications.

Operation

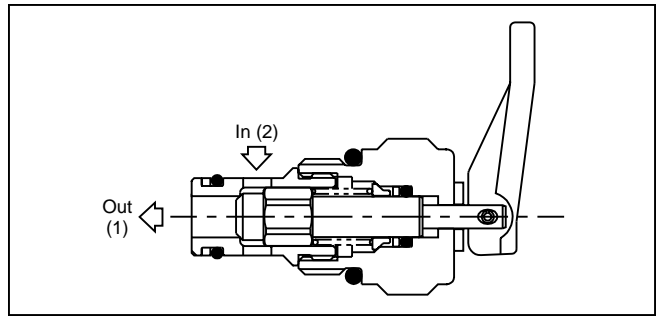
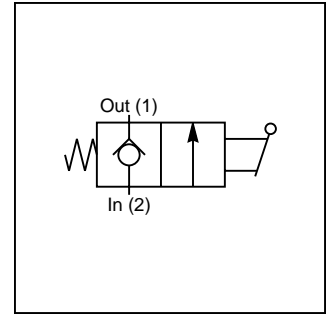
The DL081 Series Valves are mechanically operated check valves. Hydraulic force on the poppet is balanced by having equal area between the poppet seat and valve stem, allowing the poppet to be manually pulled off its seat. When released, the bias spring will return the valve poppet to its closed position. Back pressure of more than 6.9 Bar (100 PSI) will prevent the bias spring from closing the poppet and must be avoided.

Features

- Compact size for reduced space requirements
- Low leakage design
- Flip lever, pull handle, or detented pin design

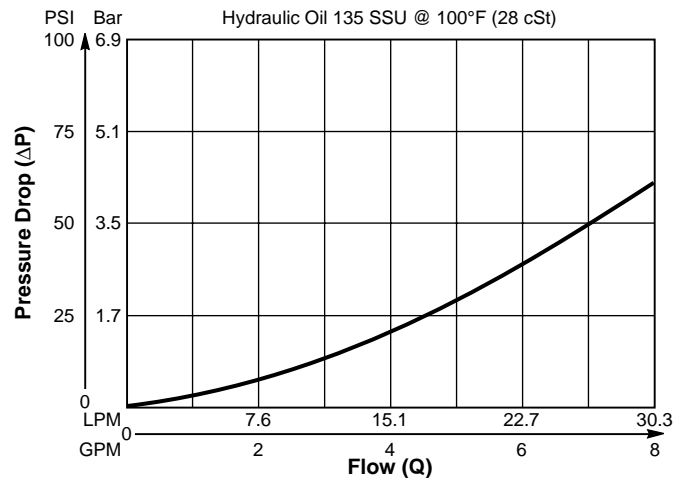
Specifications

Nominal Flow	30 LPM (8 GPM)
Maximum Inlet Pressure	210 Bar (3000 PSI)
Leakage	5 drops/min. (1/3 cc/min.) at 210 Bar (3000 PSI)
Max. Allowable Tankline Pressure	6.9 Bar (100 PSI)
Operating Temp. Range (Ambient)	-40°C to +93.3°C (Nitrile) (-40°F to +200°F) -31.7°C to +121.1°C (Fluorocarbon) (-25°F to +250°F)
Cartridge Material	Stem, stainless steel. All other parts hardened steel.
Body Material	Aluminum or Steel
Filtration	ISO code 16/13, SAE Class 4 or better
Mounting	No Restrictions
Cavity	Common Cavity No. C08-2

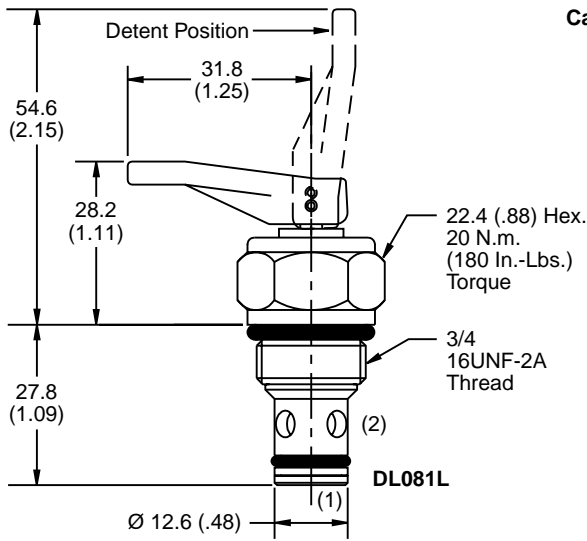


Performance Curve

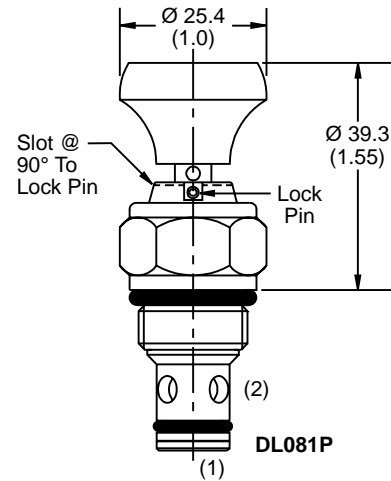
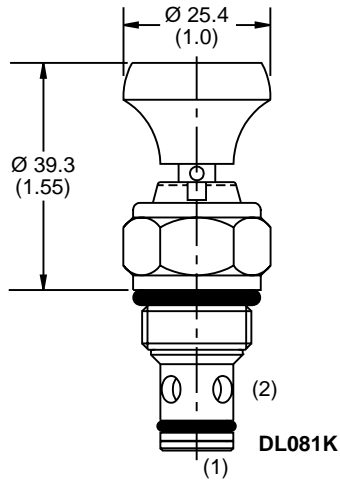
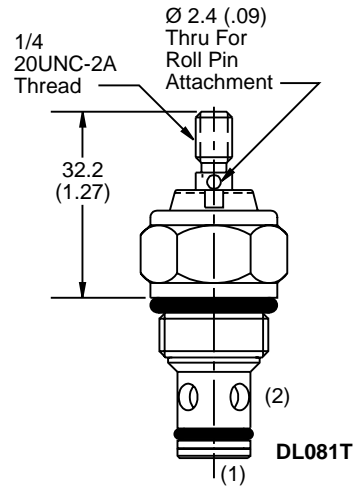
Flow vs. Pressure Drop
 (Through cartridge only)



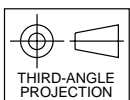
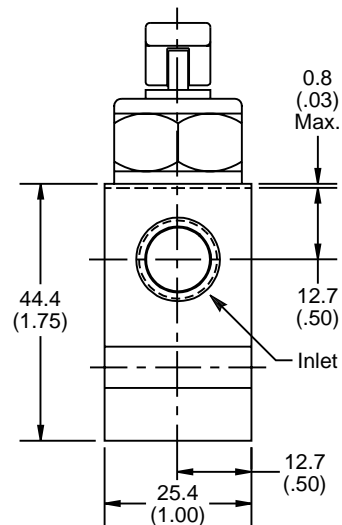
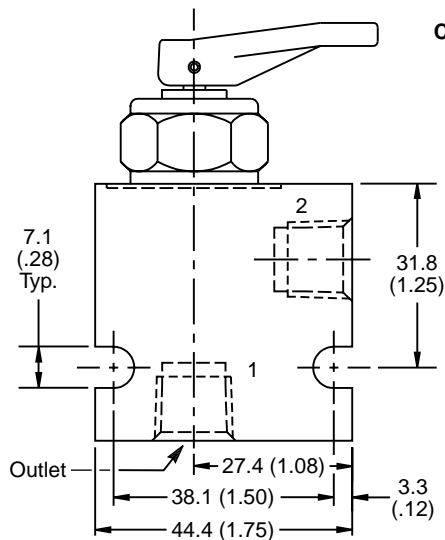
*Inch equivalents for millimeter dimensions are shown in (**)

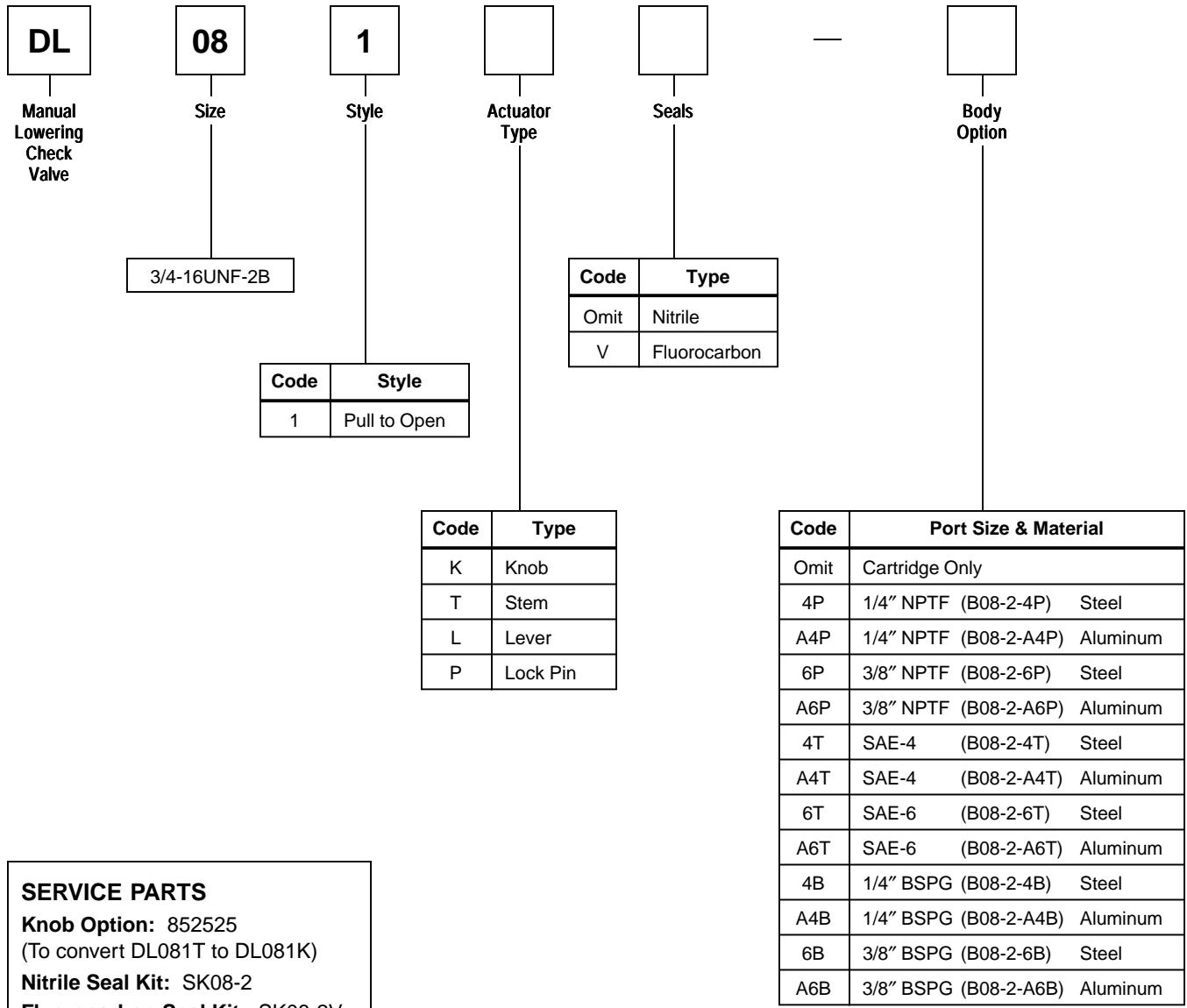


Cartridge Only



Cartridge In Body





Shipping Weight

- Cartridge Only .08 kg (.17 lbs.)
- Cartridge in Body .19 kg (.42 lbs.)