

RE 18310-22/04.10

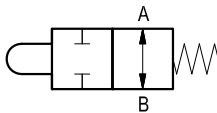
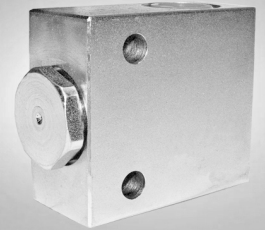
1/2

Replaces: RE 00171/02.07

End of stroke normally open

A-VMS-13-NA

FC 13 NA

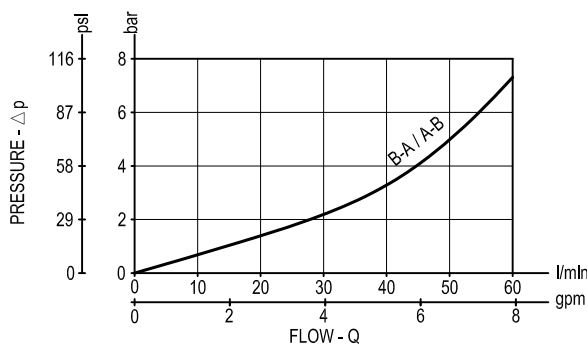


Description

This pushbutton valve is used to block oil passage in a hydraulic circuit (normally open valve); flow is allowed in both directions and the valve closes by pushing mechanically the slider.

Connect independently A or B to the distributor and to the circuit. When slider is operating flow is blocked in both direction.

Performance



Technical data

Hydraulic

Max. operating pressure	bar (psi)	250 (3600)
-------------------------	-----------	------------

Max. flow	l/min (gpm)	60 (16)
-----------	-------------	---------

Relief setting: at least 1.3 times the highest expected load.

General

Manifold material	Steel
-------------------	-------

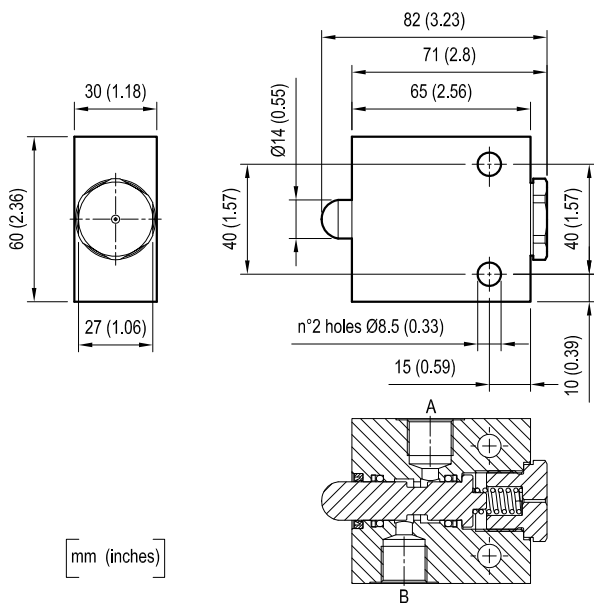
Weight	kg (lbs)	0.75 (1.7)
--------	----------	------------

Fluid temperature range	°C (°F)	between -30 (-22) and +100 (212)
-------------------------	---------	----------------------------------

Other technical data	see data sheet RE 18350-50
----------------------	----------------------------

Note: for applications outside these parameters, please consult us.

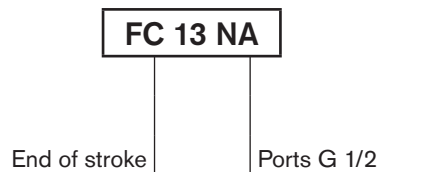
Dimensions



Spring weight - N	
End stroke	Of stroke
80	215

mm (inches)

Ordering code



Type	Material number
FC 13 NA	R932500200

Type	Material number