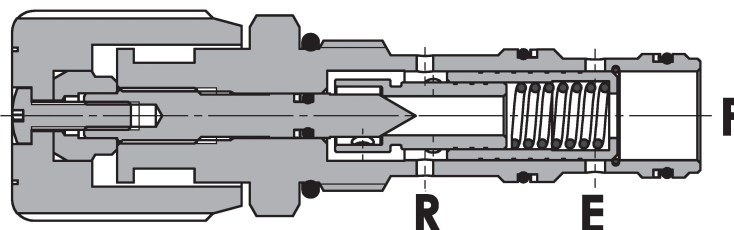
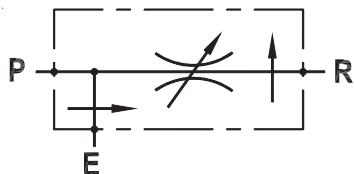


**Regolatore di flusso a 3 vie compensato, con eccedenza in pressione, versione a cartuccia**  
**Three way, pressure compensated flow regulator, with exceeding flow in pressure, cartridge version**

Rev.01-2010/02



**SPECIFICHE TECNICHE**

**Materiali:** cartuccia in acciaio zincato, parti interne in acciaio trattato termicamente.

**Portata max.:**

- 90 l/min con 60 l/min su ramo regolato "R"

**Pressione max.:** 350 bar

**Pressione di standby:** 10 bar

**TECHNICAL SPECIFICATIONS**

**Materials:** cartridge in steel zinc plated, internal parts are in hardened steel.

**Rated flow:**

- 90 l/min with 60 l/min in "R" port

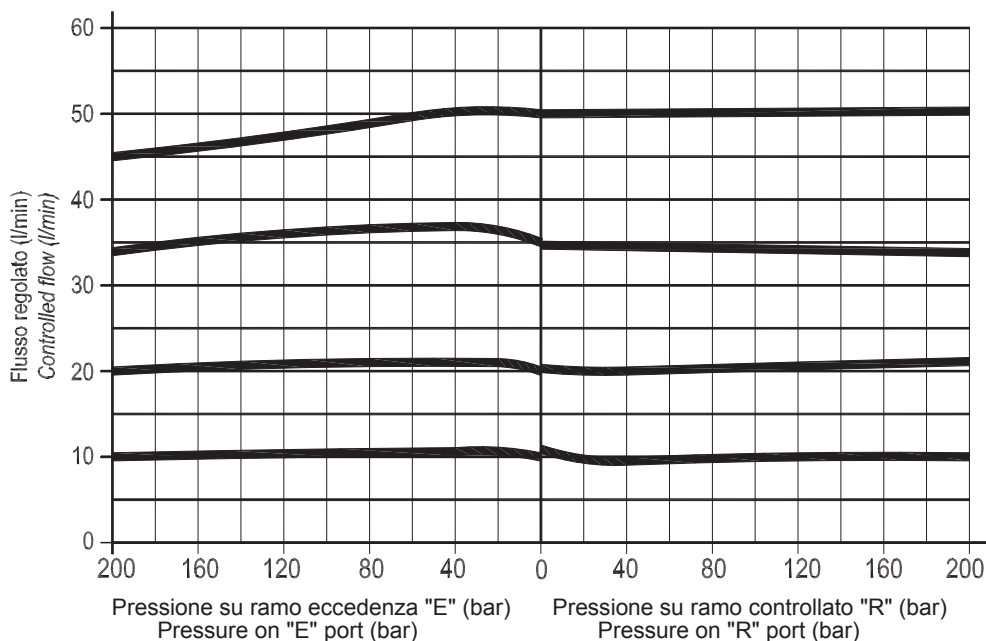
**Max. pressure:** 350 bar

**Standby pressure:** 10 bar

**DIAGRAMMA COMPENSAZIONE - COMPENSATION CURVES**

Viscosità olio 24 mm<sup>2</sup>/sec. (3,5 °E)  
 Temperatura 50 °C

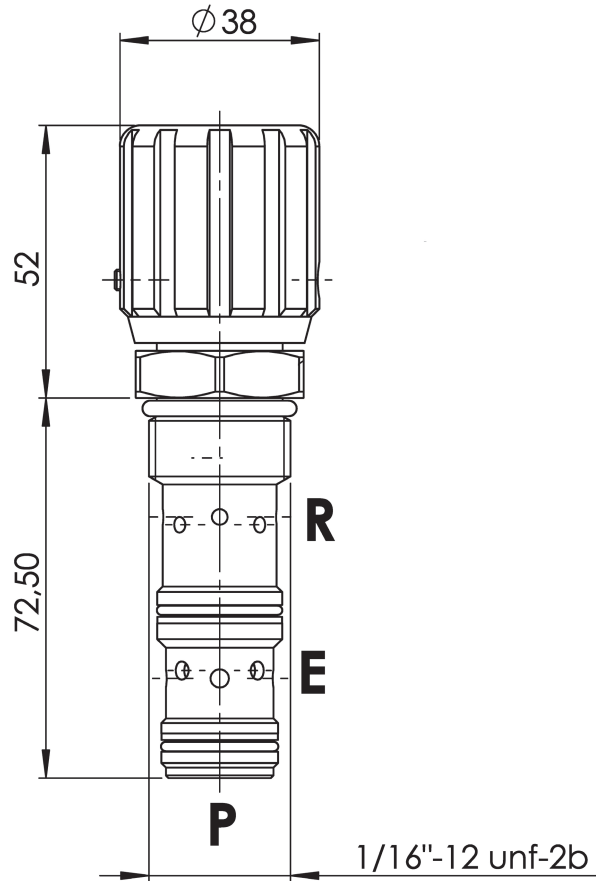
Oil viscosity 24 mm<sup>2</sup>/sec. (3,5 °E)  
 Temperature 50 °C





**Regolatore di flusso a 3 vie compensato, con eccedenza in pressione, versione a cartuccia**  
**Three way, pressure compensated flow regulator, with exceeding flow in pressure, cartridge version**

Rev.01-2010/02



TIPO TYPE	CAVITA' CAVITY	COPPIA DI SERRAGGIO INSTALLATION TORQUE		PESO WEIGHT
			Nm	Kg
FPVP 90 C R	33121		90 - 100	0.341

**ESEMPIO DI ORDINAZIONE - ORDERING CODE EXAMPLE**

**F P V P   9 0   C   R**