

FT2257/8



DOUBLE PILOT CHECK VALVES

Belonging to the same range of the in line single-acting valves, but different in that they allow the valve to open in the direction that is normally allowed thanks to a particular signal of pilot operated pressure. The high level of pilot ratio, realized in the design phase, enables rapid and complete opening for the whole duration of the desired cycle. The construction material used for the seal pistons, the hardened treatment that these are subjected to, as well as the finish-grinding guarantee a perfect seal even in particularly heavy working conditions.

Uses

The above mentioned valves are generally used for blocking work circuits under pressure, such as guarding against falling loads in the event of pipe braking or against creeping movements for hydraulically blocks systems.

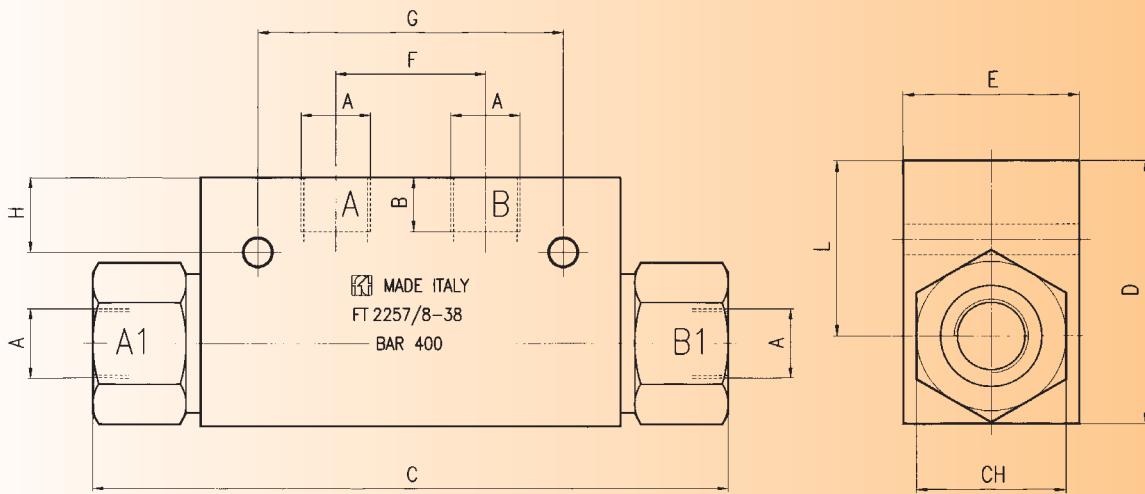
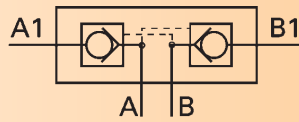


materials

Body	AISI 316 stainless steel
Check valve	38 Ni Cr Mo 4 - UNI - EN 10083
Spring	C72 UNI 3545

example for ordering

Code	Type
FT 2257/8	14

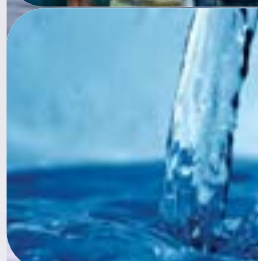


dimensions

Type	A UNI338	B	C	D	E	F	G	H	L	CH	Viti	Weight kg
14	1/4" G	12,5	126	45	35	27	60	10	29	28	M6X45	1,088
38	3/8" G	12,5	153	60	40	36	73,5	18	40	34	M6X50	1,360
12	1/2" G	15,5	193	65	50	46	94	15	40	41	M6X60	3,321

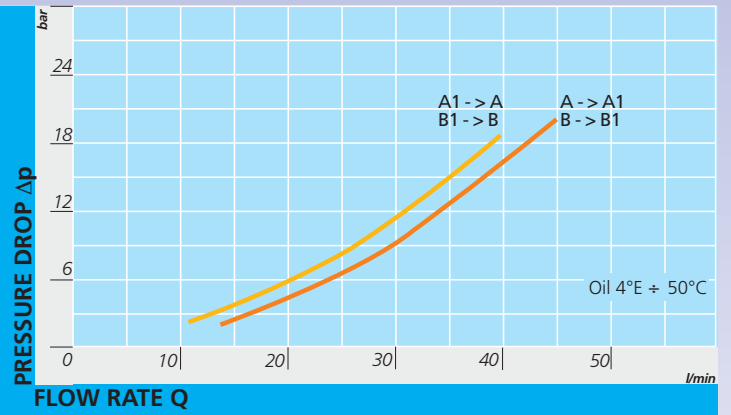
technical data

Type	Working pressure bar	Minimum working Δp bar	Working temp. °C	Filtration grade μm absolute	Pilotage ratio	Min. opening pressure bar
14	400	1600	-20° / +130 °C	25	1-7.6	0,5
38	400	1600	-20° / +130 °C	25	1-7	0,5
12	400	1600	-20° / +130 °C	25	1-7.4	0,5

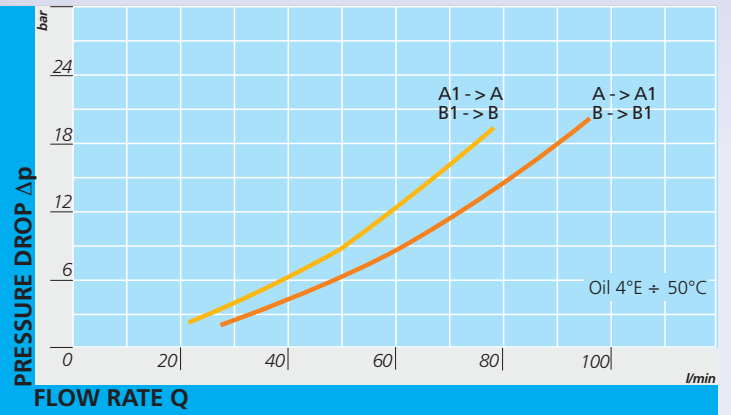




FT 2257/8 - 14



FT 2257/8 - 38



FT 2257/8 - 12

